

Jayco | 2024 Alante Class A Motorhome

# ALANTE

COMFORT MEETS DEPENDABILITY



**2+3**  
YEAR | YEAR  
WARRANTY

# INTERIOR DESIGN



## ASHVILLE



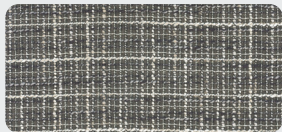
Wood



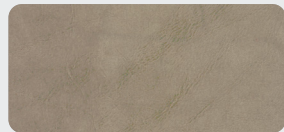
Floor



Countertop



Main Fabric



Furniture

## MODERN FARMHOUSE



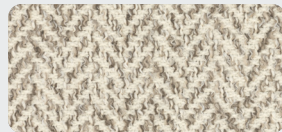
Wood



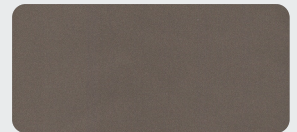
Floor



Countertop




Main Fabric



Furniture


OPTIONS

**A**



15 Cu. Ft. Fridge

**B**

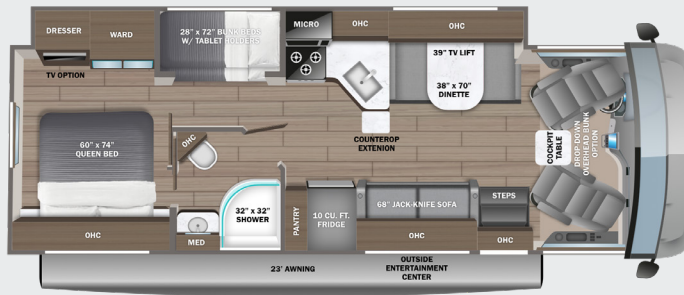


Theater Sofa

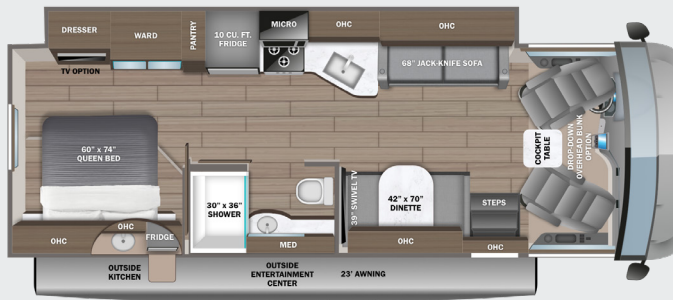
27A OPTION: A



29F OPTION: A



29S OPTION: B



EXTERIOR



Standard Graphics Package

# STANDARDS & OPTIONS

## CUSTOMER VALUE PACKAGE

JRide®: Computer-balanced driveshaft, Bilstein® steering stabilizer, jounce bumpers, heavy-duty front and rear stabilizer bars, SACHS shocks  
 One-piece, seamless, crowned fiberglass roof  
 Exterior entertainment center with outside speakers and LED HD Smart TV mounted on swivel bracket  
 Electric patio awning with LED lights  
 Slideout awning(s)  
 1,000W inverter  
 Sony® infotainment center with Apple® CarPlay™ and Android Auto™  
 Backup and side-view cameras  
 Removable driver/passenger cockpit table  
 LED HD Smart TV in living area  
 Blackout night roller shades

## DRIVING

Ford® F53 chassis  
 GVWR- 18,000 lb.  
 GCWR- 23,000 lb.  
 7.3L V-8 335 HP engine with 468 ft.-lb. torque  
 6-speed automatic TorqShift® transmission with overdrive and tow haul mode  
 210-amp alternator  
 Catalytic converter theft deterrent  
 G-rated highway tires-245/70R19.5  
 Front and rear disc, 4-wheel anti-lock brakes  
 5,000 lb. rear hitch receiver with dual connector and 7-pin plug  
 12V chassis battery  
 80 gal. fuel tank  
 120 in. panoramic windshield  
 Swivel driver and passenger seats  
 6-way power driver seat  
 Soft-touch, vinyl-wrapped automotive dash  
 Tilt steering wheel  
 Cruise control  
 Hill start assist  
 Electronic stability control  
 Traction control  
 Auxiliary start  
 Power front privacy shade with manual side privacy shades

## EXTERIOR

StrongholdVBL™ roof, floor and sidewalls  
 Bead-foam insulation (R-24 max roof, R-9 max floor, R-8 max walls)  
 One-piece, seamless, fiberglass front cap  
 Fiberglass exterior walls with vinyl graphics  
 Automatic hydraulic leveling jacks  
 Frameless windows  
 Entrance door with industry's largest travel-view window  
 Electric-powered entrance steps  
 Lockable, pass-through storage compartments with metal slam latches  
 Third brake light  
 4 in. bumper tube with sewer hose storage  
 Roof ladder  
 Prep for satellite dish  
 Cable TV hookup with RG-6 coax and video selector switch

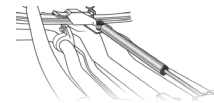
Winegard 2.0 Wi-fi/4G antenna  
 Onan® Marquis Gold Genset 4,000W generator  
 200W solar panel with dual controller and second house battery  
 (2) 12V house batteries  
 Transfer switch with reverse polarity protection  
 30-amp electrical service  
 16.5 gal. propane tank (56 lb.)  
 LP quick-connect hookup  
 Heated holding tanks (12V pads)  
 Exterior utility center  
 Winterization drain system  
 Black tank flush  
 Outside shower  
 12V demand water pump  
 Water filtration system

## INTERIOR

84 in. interior ceiling height  
 High-intensity recessed LED ceiling lights  
 LED-lit hardwood fascia  
 Hardwood cabinet doors and drawer fronts  
 Ball-bearing drawer guides  
 Jayco-exclusive, easy-operation legless dinette table  
 2-point lap safety belts in all designated seating locations  
 Car seat tethers (select floorplans)  
 Dual A/C units with power management system  
 30,000 BTU auto-ignition ducted furnace  
 6 gal. gas/electric DSI auto-ignition water heater  
 10 cu. ft. 12V refrigerator  
 Furrion® all-in-one cooktop and oven  
 Residential-size microwave  
 Large stainless steel kitchen sink with cover  
 LED-lit pressed countertops  
 Flip-up countertop extension (select models)  
 Decorative kitchen backsplash  
 Pop-up charging station in kitchen with 120V outlets and USB ports  
 Shower with decorative surround, glass door, skylight and light  
 Stainless steel bathroom sink  
 Porcelain toilet with foot flush  
 Powered roof vent in bathroom with wall switch  
 Walk-around, queen-size bed with bedspread and nightstands (king size in 27A)  
 USB port and wireless charging in nightstands  
 Under-bed storage (select models)  
 Large wardrobes  
 Bunks with industry-exclusive 300 lb. capacity each (29F)  
 Wall-mounted tablet holder in each bunk (29F)  
 Smoke alarm  
 Carbon monoxide detector  
 Fire extinguisher

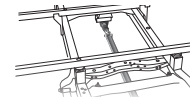
## OPTIONS

Drop-down overhead bunk in cab area with 750 lb. capacity  
 Theater seating (29S)  
 15 cu. ft. 12V refrigerator (27A, 29F)  
 LED HD Smart TV in bedroom



### BILSTEIN STEERING STABILIZER

Reduces driver fatigue by significantly improving steering, handling and comfort



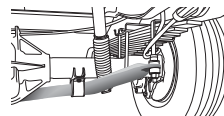
### COMPUTER-BALANCED DRIVESHAFT

Ensures smooth and efficient power transfer to the wheels



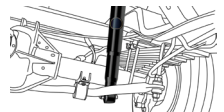
### JOUNCE BUMPERS

Assist during extreme road occurrences to absorb impact and dampen excess road noise



### HEAVY-DUTY FRONT & REAR STABILIZER BARS

A large bar and polyurethane bushings, instead of rubber, transfer power faster for extra support, more stability and easier handling



### SACHS SHOCK ABSORBERS

Large-diameter tube design pairs gas and hydraulics to resist heat and pressure while independently adjusting to changing road conditions

FLOORPLAN	GVWR (lbs.)	GCWR (lbs.)	WHEEL BASE	OVERALL LENGTH	EXTERIOR HEIGHT WITH SATELLITE AND A/C	EXTERIOR WIDTH	INTERIOR HEIGHT	FRESH WATER CAPACITY (gal.)	GRAY WASTE WATER CAPACITY (gal.)	BLACK WASTE WATER CAPACITY (gal.)
27A	18,000	23,000	190"	29' 11"	12' 5"	101"	84"	72	50	49
29F	18,000	23,000	190"	32' 2"	12' 5"	101"	84"	72	40	49
29S	18,000	23,000	190"	31' 4"	12' 5"	101"	84"	72	40/9	50

Meet your Jayco Dealer



Scan QR code for specification definitions

Some specs at the time of print may include estimates. For the most updated information, please visit [Jayco.com](http://Jayco.com)

Jayco Inc. | P.O. Box 460 | Middlebury, IN 46540

See dealer for further information and prices. All information in this brochure and on [www.jayco.com](http://www.jayco.com) is the latest available at the time of publication approval. Jayco reserves the right to make changes and to discontinue models without notice or obligation. Photography may show optional equipment or props used for decoration purposes only. RVs built for sale in Canada may differ to conform to Canadian codes. JAYCO and the JAYCO BIRD IN FLIGHT are registered trademarks of Jayco, Inc. Printed in USA 10/23 ©2023 Jayco, Inc.



Jayco - Part of Jayco Family of Companies