

2021 FRONT ENGINE DIESEL MOTOR COACH

# CANYON STAR



## Family Getaways are Getting Better

A trip with the grandkids is always special. Taking one in the all-new 2021 Canyon Star, though, makes it even better. Now a member of our diesel lineup, the Canyon Star now offers its owners greater engine torque and fuel efficiency, ideal for better uphill acceleration, towing, and even toy hauling. It's available in eight total floor plans, including two that are exclusive to the Canyon Star, so you can make your family trips exactly what you want them to be.





## Redefining Recreation

### 2021 Canyon Star

The 2021 Canyon Star was redesigned to better suit your trips. Starting from the ground up, the Canyon Star is now available exclusively on a Freightliner® MC Chassis that features a Cummins "B" diesel engine with 340 horsepower and 700 lb./ft. of torque. With all of that power, it's now easier to accelerate uphill or tow a vehicle. It also means it's easier to haul your favorite recreational toys around with you, like ATVs or motorcycles. In fact, the toy hauler model—floor plan 3927—is the only Class A front-engine diesel toy hauler on the market today.

*Magnum full-paint Masterpiece™ finish*

# The Right Time for a Road Trip

The cockpit of the Canyon Star is also redesigned for 2021. You'll find an entirely new dash design and instrument cluster, steering wheel and column, and HVAC system for the cockpit, as well as six-way power-adjustable captain's chairs. The passenger seat features a workstation. There are also USB chargers to keep your devices full. Standard rear- and side-view camera systems help you keep an eye on your surroundings at all times. The Sony® audio system with four custom-tuned JBL speakers lets your music or audiobook shine through in crystal clear sound.



*Floor plan 3719 with Magnum décor  
and Newport maple cabinetry*



## Game Night in the Cards

With all-new Williamsburg furniture, you'll be able to settle into game or movie night with ease. You'll find new custom wall sconces and luxury vinyl tile flooring throughout, as well as a newly designed hardwood slideout fascia. Enjoy a movie on a Samsung® LED TV, Blu-ray player, and Bose® soundbar. An additional overhead mounted TV is also available. Choose one of two Wi-Fi access solutions to stream shows or browse the web. You can also choose a furniture configuration that best suits your needs, from a 74" trifold sofa and booth dinette, or theater seating, recliners, and more.





## Cook Out, or Cook In

The kitchen of the Canyon Star makes cooking fun and fashionable. New cabinet designs are stylish and there's redesigned hardware, as well as soft-close drawers. The appliances are the envy of home cooks, with a residential Whirlpool® refrigerator, 30" Whirlpool® convection microwave, and Suburban Elite Series 3 gas cooktop. An optional dishwasher makes cleaning up even easier. It's all brought together by polished solid-surface countertops and a stainless steel double-bowl sink.





## Stylish Sleepovers

The master bedroom of the Canyon Star offers a sound night's sleep. A queen- or king-sized pillow top or optional Sleep Number® adjustable mattress ensures your comfort. Need some entertainment before you drift off? A Samsung® LED TV and Blu-ray player are across the foot of the bed, nestled in a large dresser. A lit wardrobe also offers more space for clothing, plus large nightstands for other nighttime necessities.



## Rest and Retreat

When you need a moment away from your fellow travelers, the master bathroom of the Canyon Star is there for you. Depending on the floor plan, the bathroom is located either in the rear or mid-ship. Either features a spacious shower with a fold-down seat, polished solid-surface vanity, and linen cabinet. The Canyon Star also offers a continuous water heater to let those peaceful showers last just a little bit longer.

## A Spa to Share

Floor plan 3929 offers both a rear half-bathroom and a full mid-ship. This is ideal for providing a little extra space for you and giving the grandkids or other guests a space of their own. The full bath offers a spacious 40" x 32" shower. The rear half-bath in 3929 comes with a polished, solid-surface corner vanity, with space adjacent for a wardrobe or stacked Splendide® washer and dryer—plus rear bunks with additional drawers below.







2017 Canyon Star image shown

## The Outdoors Uncompromised

The outdoors should be available to all of us, so Newmar has floor plans in several of our coaches engineered specifically for ultimate accessibility. Designed with insight and direction from wheelchair users, each coach in the Newmar Mobility Lineup is meant to provide greater mobility for anyone who loves to travel.

In Canyon Star floor plan 3911 you'll find a wide variety of accessibility options, including a BraunAbility® power lift and spacious aisleway. Furniture has been raised to allow for wheelchair seating, while switches, controls, and the microwave have been lowered. A roll-in shower with adjusted seat and full wardrobe complete the master suite.



2017 Canyon Star image shown | Floor Plan 3911



## Bring Adventure with You

At the rear of floor plan 3927, there's a wide-open 95.5" x 120" multipurpose garage space. As the only Class A front-engine diesel toy hauler on the market, the 2021 Canyon Star offers both the space and the extra power you need to easily bring along ATVs, kayaks, or motorcycles—or any other recreational toys to help you enjoy the outdoors.



## Wide Open Spaces

Alternatively, the garage area can be used as additional sleep and living space. You can choose to add electric lift bunk beds—perfect for grandkids—and a pedestal table with seating. Other options include a Splendide® stacked washer and dryer concealed in a cabinet. Plus, features like a Samsung® LED TV, foldable seats, and removable carpet make the garage space extremely versatile—easy to adjust to your lifestyle.



2017 Excalibur paint shown



## A Monument to the Outdoors

The 2021 Canyon Star is designed to make the outdoors every bit as inviting as the interior. This starts with the Carefree Apex dual-stage roof-mounted awning with LED accent lighting. The available outdoor entertainment package includes a Samsung® LED TV and radio—perfect for catching the big game. The exclusive full-paint Masterpiece™ finish helps the Canyon Star stand out from the crowd. And as mentioned before, floor plan 3927 is ready to help you engage the outdoors every way you want to.

# Exterior and Interior Décor



## LINX EXTERIOR

*Awning Color: Linen Tweed*



## LINX INTERIOR

*a. Furniture/Fabric b. Flooring c. Counter Top*



## MAGNUM EXTERIOR

*Awning Color: Charcoal Tweed*



## TIMBERLAND EXTERIOR

*Awning Color: Charcoal Tweed*



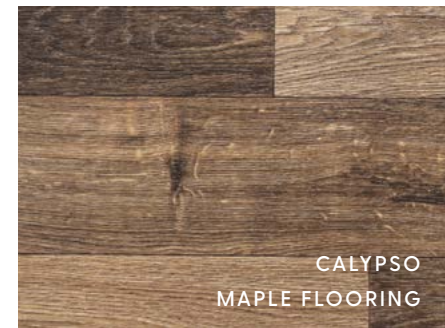
**MAGNUM INTERIOR**

*a. Furniture/Fabric b. Flooring c. Counter Top*



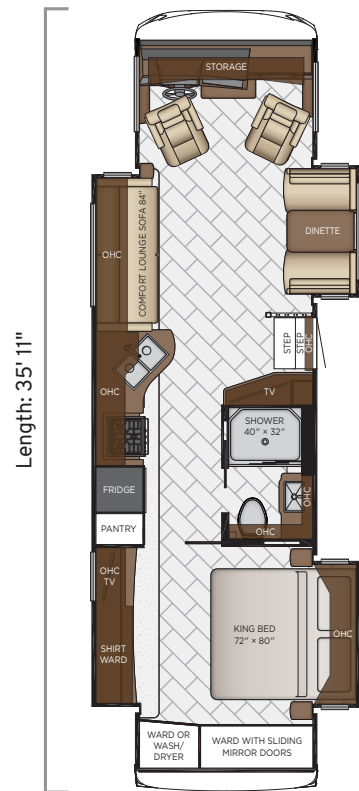
**TIMBERLAND INTERIOR**

*a. Furniture/Fabric b. Flooring c. Counter Top*



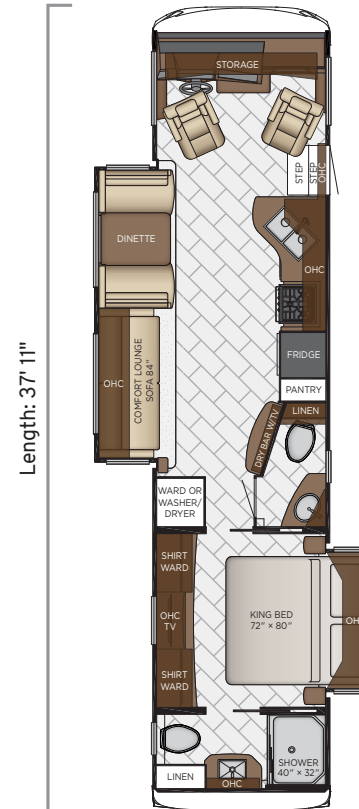
\*Available Hardwood Frame

# Canyon Star



## 3513

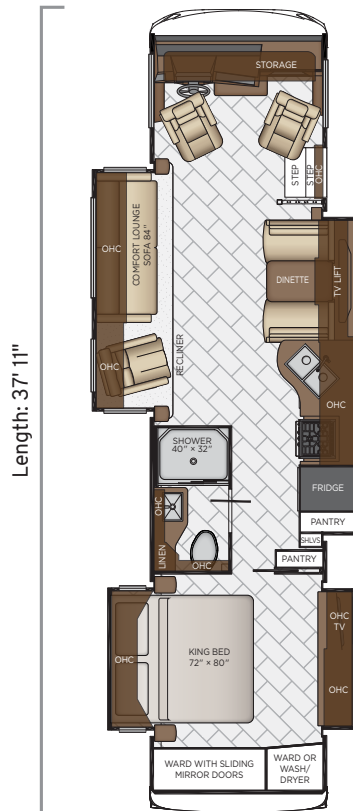
Length	35'11"
Width	101.5"
App. Overall Height	12'11"
Interior Width	95.5"
Interior Height	84"
Grey Tank	60 gal.
Sewage Tank	40 gal.
Water Tank	75 gal.
Propane Tank	25 gal.
Furnace	40,000 btu



## 3710

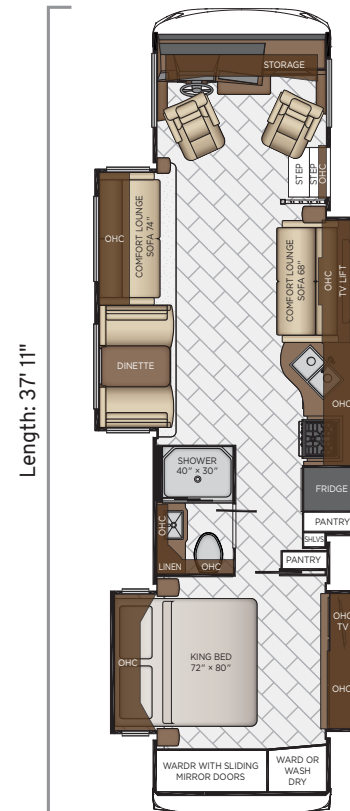
Length	37'11"
Width	101.5"
App. Overall Height	12'11"
Interior Width	95.5"
Interior Height	84"
Grey Tank	60 gal.
Sewage Tank	92 gal.
Water Tank	75 gal.
Propane Tank	25 gal.
Furnace	40,000 btu

# Floor Plans



## 3719

Length	37'11"
Width	101.5"
App. Overall Height	12'11"
Interior Width	95.5"
Interior Height	84"
Grey Tank	60 gal.
Sewage Tank	40 gal.
Water Tank	75 gal.
Propane Tank	25 gal.
Furnace	40,000 btu

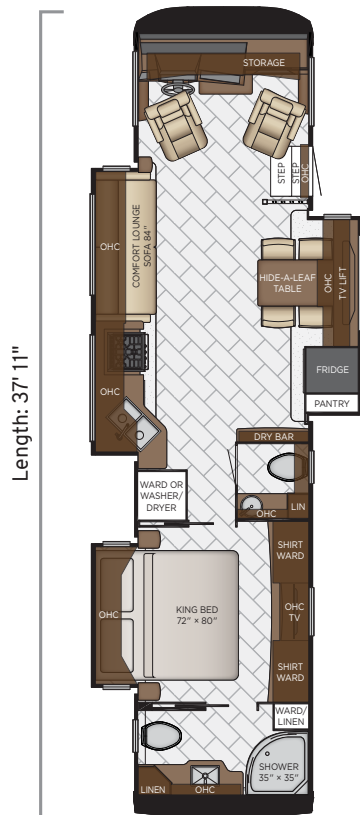


## 3722

Length	37'11"
Width	101.5"
App. Overall Height	12'11"
Interior Width	95.5"
Interior Height	84"
Grey Tank	60 gal.
Sewage Tank	40 gal.
Water Tank	75 gal.
Propane Tank	25 gal.
Furnace	40,000 btu



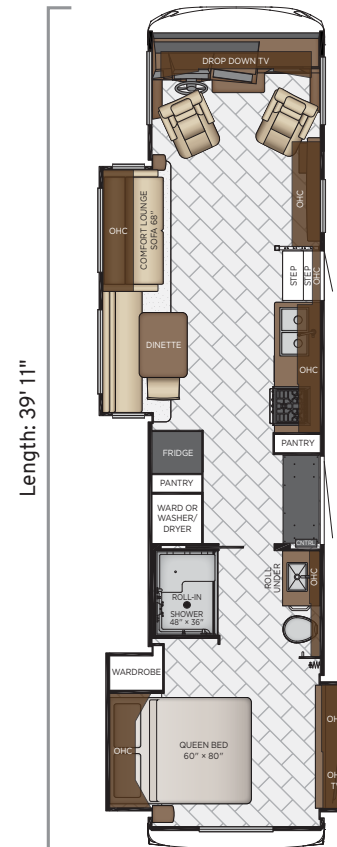
# Canyon Star



Length: 37' 11"

## 3747

Length	37'11"
Width	101.5"
App. Overall Height	12'11"
Interior Width	95.5"
Interior Height	84"
Grey Tank	60 gal.
Sewage Tank	92 gal.
Water Tank	75 gal.
Propane Tank	25 gal.
Furnace	40,000 btu

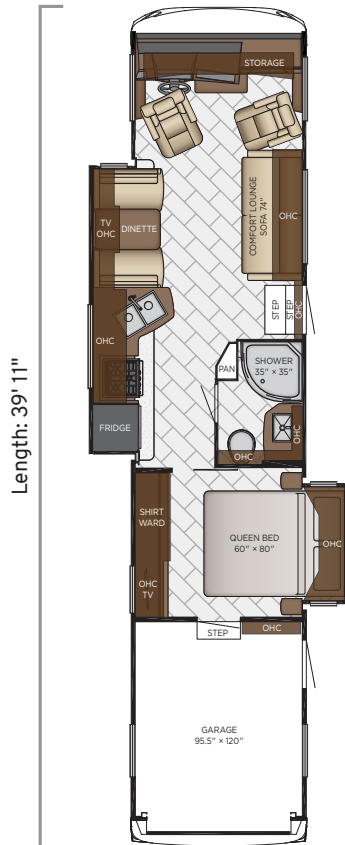


Length: 39' 11"

## 3911

Length	39'11"
Width	101.5"
App. Overall Height	12'11"
Interior Width	95.5"
Interior Height	84"
Grey Tank	60 gal.
Sewage Tank	40 gal.
Water Tank	75 gal.
Propane Tank	25 gal.
Furnace	40,000 btu

# Floor Plans



## 3927

Length	39'11"
Width	101.5"
App. Overall Height	12'11"
Interior Width	95.5"
Interior Height	84"
Grey Tank	60 gal.
Sewage Tank	40 gal.
Water Tank	75 gal.
Propane Tank	25 gal.
Furnace	40,000 btu



## 3929

Length	39'11"
Width	101.5"
App. Overall Height	12'11"
Interior Width	95.5"
Interior Height	84"
Grey Tank	60 gal.
Sewage Tank	92 gal.
Water Tank	75 gal.
Propane Tank	25 gal.
Furnace	40,000 btu



*Optional Drop-down Bunk Bed Over  
Driver and Passenger Seats Shown*



Canyon Star  
FRONT ENGINE DIESEL

Canyon Star  
FRONT ENGINE DIESEL

NEWMAR

NEWMAR

# Quality You Can Feel

Like a fine home, the 2021 Canyon Star is framed 16 inches on center, and is covered by a fiberglass roof with walkable decking and an integrated gutter rail.

FLOOR PLAN	ENGINE HP	AXLE RATIO	FUEL CAP.	WHEEL BASE	FRONT GAWR	REAR GAWR	TAG GAWR	GVWR	GCWR	APP. UVW	APP. NCC
3513	340	5.13	80 gal.	246	12000 lb.	20000 lb.	n/a	30000 lb.	33000 lb.	25670 lb.	4330 lb.
3710	340	5.13	80 gal.	256	12000 lb.	20000 lb.	n/a	30000 lb.	33000 lb.	25202 lb.	4798 lb.
3719	340	5.13	80 gal.	262	12000 lb.	20000 lb.	n/a	30000 lb.	33000 lb.	25944 lb.	4056 lb.
3722	340	5.13	80 gal.	262	12000 lb.	20000 lb.	n/a	30000 lb.	33000 lb.	26515 lb.	3485 lb.
3747	340	5.13	80 gal.	262	12000 lb.	20000 lb.	n/a	30000 lb.	33000 lb.	26400 lb.	3600 lb.
3911	340	5.13	80 gal.	274	12000 lb.	20000 lb.	n/a	30000 lb.	33000 lb.	26129 lb.	3871 lb.
3927	340	5.13	80 gal.	274	12000 lb.	20000 lb.	n/a	30000 lb.	33000 lb.	25523 lb.	4477 lb.
3929	340	5.13	80 gal.	274	12000 lb.	20000 lb.	n/a	30000 lb.	33000 lb.	26748 lb.	3252 lb.

**The content in our literature depicts and describes products that are subject to change. For the most recent images and information, please visit [NewmarCorp.com](http://NewmarCorp.com).**

Lengths, heights, widths, and dry weights are approximate. Weight will vary based on optional equipment added to the above base weight.

**GAWR:** Gross Axle Weight Rating is the maximum permissible weight for an axle.

**GVWR:** Gross Vehicle Weight Rating is the maximum permissible weight for a fully loaded motor coach.

**GCWR:** Gross Combination Weight Rating is the value specified by the manufacturer of the vehicle as the maximum allowable loaded weight of this motor coach and any towed trailer or towed vehicle.

**UVW:** Unloaded Vehicle Weight is the weight of this motor coach as built at the factory with full fuel, engine oil, and coolants. Does not include cargo, fresh water, propane gas, or dealer-installed accessories.

**NCC:** Net Carrying Capacity is the maximum weight of all occupants, including the driver, personal belongings, food, fresh water, waste water, propane gas, tools, tongue weight of towed vehicle, dealer-installed accessories, etc., that can be carried by the motor coach.

**Specifications supplied by the chassis manufacturer.**

**Canyon Star R-Values:**

Roof R-Value = 16

Sidewall R-Value = 11

Floor R-Value = 11

# Features and Options

## EXTERIOR



### EXTERIOR FEATURES

Full-Paint Masterpiece™ Finish with Clearcoat Finish

Diamond Shield Protection on Front Cap

Convex Exterior Mirrors with Defrost and Remote Control

Entrance Door with Automatic Step

Entrance Door with Automatic Triple Step in Garage\* (3927 Floor Plan)

Fueling Station in Garage\* (3927 Floor Plan)

Rear Hitch for Towing Car

Garage Rear Ramp Access Designed for ATV and Normal Clearance Motorcycle

Assist Handle at Entrance Door

Wheelchair Lift on 3911 Floor Plan

Stainless Steel Exterior Trim Pieces on Front Cap and Grille Area

Chrome Exterior Baggage Door Handles

Smart Level Hydraulic Leveling Jacks with Bluetooth Compatible Touch Pad

Undercoating

Mud Flaps

Rear Protective Tow Guard with Stainless Newmar Letters

Exterior Shower

### OPTIONS

Rear Ladder

Flagpole Bracket

### CONSTRUCTION FEATURES

One-piece Molded Fiberglass Roof

5/8" Foam Insulation Laminated in Sidewalls and Ceiling

Gelcoated Fiberglass Exterior Sidewalls, Front and Rear Caps

Aluminum-Frame Sidewalls and Roof Construction, 16" on Center

Polar Pak R-19 Batten Insulation on Roof

Automatic Mechanical Lock Arms on Slideout Rooms-Scissor Style

### OPTIONS

Power Opening Wheelchair Lift Entrance Door on 3911 Floor Plan

Power Entrance Step Well Cover on 3911

Egress Door with Ladder System\*



Canyon Star Dash



## WINDOWS, AWNINGS & VENTS

Frameless Double-Pane Tinted Safety Glass Windows

Fan-Tastic® Vent with Rain Sensor in Kitchen, Bathroom and 3927 Garage\*

Skylight Above Shower

Apex Dual Stage Armless Awning with Strip Lighting

Slideout Covers

One-Piece Tinted Windshield

Rear Window in Bedroom\*

### OPTIONS

Kitchen Window

Power Driver Window

Power Screen for Rear Cargo Door\*

Screen Door Over Wheelchair Lift Area

## CHASSIS FEATURES

Freightliner® 246" WB, 340Hp Front-Engine Diesel on 3513

Freightliner® 256" WB, 340Hp Front-Engine Diesel on 3710

Freightliner® 262" WB, 340Hp Front-Engine Diesel on 3719, 3722 and 3747

Freightliner® 274" WB, 340Hp Front-Engine Diesel on 3911, 3927, and 3929

Cruise Control

Tilt Steering Wheel

Aluminum Wheels

Anti-lock Braking System

## AIR CONDITIONING & HEATING

Two 13.5M Penguin™ Central Air Conditioners

Dash Heater and Air Conditioner

Defrost Fans Built Into Front Overhead

Driver and Passenger Dash Overhead Ventilation System

Propane Gas Furnace with Ducted Heat

### OPTIONS

13.5M Penguin™ Air Conditioner with Heat Pump, 8 kW Generator in Garage of 3927

Two 15M Penguin™ Heat Pump Air Conditioners

Auxiliary Heater in Bedroom

## ELECTRICAL FEATURES

6 kW Cummins Onan® Generator with Remote Switch and Automatic Changeover

110V/USB Outlet at Head of Each Bunk Area\*

50 Amp Electrical Service with Flexible Cord and Automatic Transfer Switch

Two 12 Volt House Batteries

Battery Disconnect Switch for House Battery

12 Volt Auxiliary Recept on Dashboard

10 Watt Solar Panel to Charge Chassis Battery

Drain Lift Pump with 1200 Watt Inverter\*

60 Amp Converter

Daytime Running Lights

Emergency Engine Start Switch

Accent Lights in Slideout Fascia Trim

LED Ceiling Lights Throughout

Interior Courtesy Lights

Multiplex Lighting Control System

Lighted Wardrobe

Manually Operated Hold-To-Run Slideout Switch

Energy Management System

USB Charger at Passenger Seat Area and at Dash for Driver Use

Cable TV Connection

Fog Lights

Lights in Exterior Storage Compartments, Controlled by an Interior Master Switch

LED Awning Strip Lighting

Automatic Generator Start on Low Battery or Temperature Setting

### OPTIONS

1200 Watt Inverter Run to TVs\*

1200 Watt Pure Sine Inverter for Bedbase, Nightstand and Overhead Cabinet Recepts

8.0 kW Cummins Onan® Generator

Power Rewind Reel with 33' Cord\*

Solar Prep with 6 Gauge Wire Run from Roof to 1st Storage Compartment

Transfer Switch with Surge Protector

## PLUMBING & BATH FEATURES

Demand Water System

Sewage Holding Tank Rinse

Water Heater Bypass System

Dometic® 321 China Bowl Stool\*

Fiberglass Shower Surround with Shower Door\*

Water Filter for Entire Unit

Systems Monitor Panel

### OPTIONS

Fold-Down Shower Seat



## INTERIOR FEATURES

Padded Vinyl Ceiling

Carpeting on Slideout Floors

Bathroom Floor Extended into Bedroom Area

Inlaid Six Panel Design Interior Passage Doors

Auto Motion Power Shade at Windshield and Manual Shades at Driver/Passenger Side Windows

Auto Motion Manual Double Roller Window Shades\*

Hardwood Slideout Fascia

Dash Panel Color Coordinated ABS

Decorative Wall Art

Fitted Non-quilted Bedspread and Accent Pillow

Vinyl Tile Floor in Kitchen, Bathroom and Living Area

Interior Assist Handle at Main Entrance Door

Shoe Storage Located in Entrance Door Step Compartment

Diamond Tread Rubber Flooring in Garage on 3927

Tie-down Track in Garage on 3927

Integrated Window Blind System on Entry Door

Wastebasket in Kitchen Base Under Sink

### OPTIONS

Two Wheel Chocks in Garage Area\*

Auto Motion Power Window Shades with Remote Control on 3911

Carpet in Bedroom

Vinyl Plank Floor in Place of Vinyl Tile

## CABINETS & FURNITURE

Calypto Glazed Maple Cabinets with Mitered Designer Doors and Matte Finish

Concealed Hinges on Cabinet Doors

Villa Comfort Fit Convertible Booth Dinette

Drawers Underneath Booth Dinette Seats

Soft-close Cabinet Drawers

Polished Solid Surface Countertop in Kitchen with Undermounted Stainless Steel Sink and Sink Covers

Polished Solid Surface Countertops in Bathroom and Bedroom

Drawers with Full Extension Ball Bearing Guides

Pull-Out Pantry Shelves\*

Ultralux® Leather Sofa and Driver Passenger Seats

Dinette with Power Adjusted Table, Bench Seat and Folding Chair on 3911 Floor Plan

Six-Way Power Driver/Passenger Seats

Manual Footrest On Passenger Seat



Passenger Seat Work Station
Lifts on Bed Top to Access Storage Area*
Plush Pillow Top Mattress
Extended Rotation Concealed Hinge for Washer/Dryer Cabinet Door
Lower Bed Base with Power Incline Head of Bed and Sleep Number® Deluxe Mattress on 3911
Mesh Cell Phone Holder at Each Bunk Bed*
Molded Silverware Divider Tray

<b>OPTIONS</b>
Arctic Maple Glazed Cabinets with Mitered Designer Doors and Matte Finish
Bermuda Glazed Maple Hardwood Face Frame Cabinets with Mitered Designer Doors-Matte Finish
Harbour Glazed Maple Cabinets with Mitered Designer Doors and Matte Finish
Newport Glazed Maple Hardwood Face Frame Cabinets with Mitered Designer Doors and Matte Finish
Glacier Glazed Maple Hardwood Face Frame Cabinets with Mitered Designer Doors and Matte Finish
Combination Desk/Dinette with Freestanding Hidden-Leaf Table with Four Chairs
Combination Desk with Buffet Table (Two Fixed/Two Folding Chairs)*
Combination Desk/Dinette with Rollaway Table (Two Fixed/Two Folding Chairs)*
Dinette with Rollaway Table
Freestanding Hidden Leaf Dinette Table (Two Fixed/Two Folding Chairs)
Drop-Down Bunk Bed Over Driver/Passenger Seats with Electric Release Latches and 32" TV in Front Overhead and Bunk Ladder
Drop-Down Bunk Bed Over Driver/Passenger Seats with Electric Release Latches and Bunk Ladder
Sleep Number® R5 Square Corner Air Mattress
Power Adj. Height Bedbase with Freestyle Glideaway Adj. Bed Mechanism with Air Mattress and Window on 3911
Full Height Bed Base on 3911
Power Incline Retracting Bed Base with Sleep Number® Air Mattress
Electric Lift Bunk Beds with Removable Rug in Garage*
Electric Lift Bunk Beds with Seating, Pedestal Table and Removable Floor Rug in Garage*
Lowered Bed Base with Freestyle Glideaway Adj. Bed Mechanism with Air Mattress and Window
Two Recliners Off Door Side, 68" Visionary Trifold Sofa with Memory Foam Mattress
Euro Booth Dinette
Buffet Dinette
Buffet Dinette with Freestanding Table

Extenda Flex Dinette
Powered Theater Seating*
Two Ottomans*
68" Visionary Trifold Sofa with Memory Foam Mattress
74" Visionary Trifold Sofa with Memory Foam Mattress
84" Visionary Trifold Sofa with Memory Foam Mattress

**APPLIANCES & ACCESSORIES**

Three-Burner Recessed Range with Oven*
Convection Microwave Below Cooktop on 3911
30" Convection Stainless Steel Microwave with Three-Burner Gas Cooktop with Piezo Ignition*
Norcold® 10 Cf. Refrigerator
Raised Panel Refrigerator Door Insert
Flush Gas Cooktop Cover of Matching Countertop Material
10 gal. Gas/Electric Water Heater Direct-Spark Ignition*
Continuous Flow Water Heater for 3927
Truma AquaGo Instant Continuous Flow Water Heater on 3927

<b>OPTIONS</b>
30" Convection Stainless Steel Microwave in Kitchen Overhead with Drawer Below Cooktop on 3911
Two-Burner Induction Cooktop
Norcold® 12 Cf. Four-Door Refrigerator with Icemaker
Icemaker Added to Standard Norcold® Refrigerator
Icemaker Added to Standard Norcold® Refrigerator with Heated Water Line
Whirlpool® 19.7 Cf. Refrigerator, 2000 Watt Pure Sine Inverter and Six-6 Volt Batteries
Whirlpool® 11 Cf. Refrigerator with Dedicated 1200 Watt Pure Sine Inverter and Two Extra Batteries and Icemaker
Dishwasher Under Cooktop
Splendide® Two-Piece Stacked Washer and Dryer
Splendide® Two-Piece Stacked Washer and Dryer in Garage on 3927
Prep for Two-Piece Washer/Dryer
Prep for Two-Piece Washer/Dryer in Garage on 3927
Central Vacuum with Tool Kit
Fireplace in Living Area*
110 Volt Heat Pads for Holding Tanks
Truma Comfort Plus Continuous Hot Water Heater



**AUDIO, VIDEO & ACCESSORIES**

Samsung® LED TV and DVD Player in Living and Bedroom Area (TV Sizes Vary Per Floor Plan)
Bose® Solo 5 Soundbar Sound System
AM/FM/CD Dash Radio with Harman/JBL 180 Watt Sound System
Exterior AM/FM/DVD Radio with Two Speakers Inside 3927 Garage Area and Two Outside Speakers*
High Definition Component Wiring
Rearview Color Monitor System with Audio
Side-View Cameras Displayed onto Rearview Monitor Screen
Winegard Digital Crank-Up TV Antenna
Two Bedroom Radio Speakers with On/Off Switch
Satellite Prep on Roof
TV Jack and 110 Volt Recept in Door Side Exterior Storage Compartment
Two Sony® Blu-ray Disc Players
Bluetooth Microphone for Sony® Dash Radio
10 Bc Fire Extinguisher, Smoke Detector, Propane and Carbon Monoxide Detector
10 Bc Fire Extinguisher in Garage 3927 Floor Plan
Xite Dash Radio with 9" Monitors and Rand McNally Navigation

<b>OPTIONS</b>
Sirius® Satellite Radio with Antenna (Does Not Include Monthly Subscription)
43" Samsung® LED TV in Front Overhead*
50" Samsung® Televator TV with Fireplace in Place of Front Overhead TV on 3911
32" Samsung® LED TV in Garage Area*
Two 19" Skyworth TV/DVD Monitors one at each Bunk*
WiFiRanger Teton/Poplar Combo
WiFiRanger Denali/Spruce LTE
Winegard Automatic Dome Satellite Dish
Winegard Automatic Open Face Satellite Dish
Winegard Automatic Open Face SWM Satellite Dish
Winegard In Motion Dome Satellite Dish
Winegard Rayzar Automatic Digital TV Antenna
Exterior Entertainment Center in Sidewall with Samsung® 32" LED TV and Radio
Exterior Entertainment Center in Storage Compartment with Samsung® 32" LED TV and Radio

\*Check with dealership on floor plan availability.  
The content in our literature depicts and describes products that are subject to change. For the most recent images and information, please visit NewmarCorp.com.



# The Newmar Customer Experience

The Newmar difference goes beyond our industry-leading motor coaches to provide you with an unrivaled ownership experience.



## QUALITY FROM THE START

Every Newmar is crafted one at a time by folks who have spent an average of eight years building them. And each coach we assemble must undergo more than 1,000 tests and checks before ever leaving our factory.



## CAREFULLY SELECTED DEALERS

We view our dealership network in terms of quality, not quantity. Each of our dealers acts as a partner in our shared mission to exceed your highest of expectations, for an ownership experience that's second to none from day one.



## EVERYTHING IN ONE PLACE

As a Newmar owner, you'll find resources specific to your coach through Newgle, an easy-to-use knowledge base that houses everything from user guides to technical support documents.



## FRIENDS FOR LIFE

Meet fellow owners through the Newmar Kountry Klub, a top social club for RV travelers that hosts rallies and other special events throughout the U.S. and Canada.



## SEAMLESS SERVICE

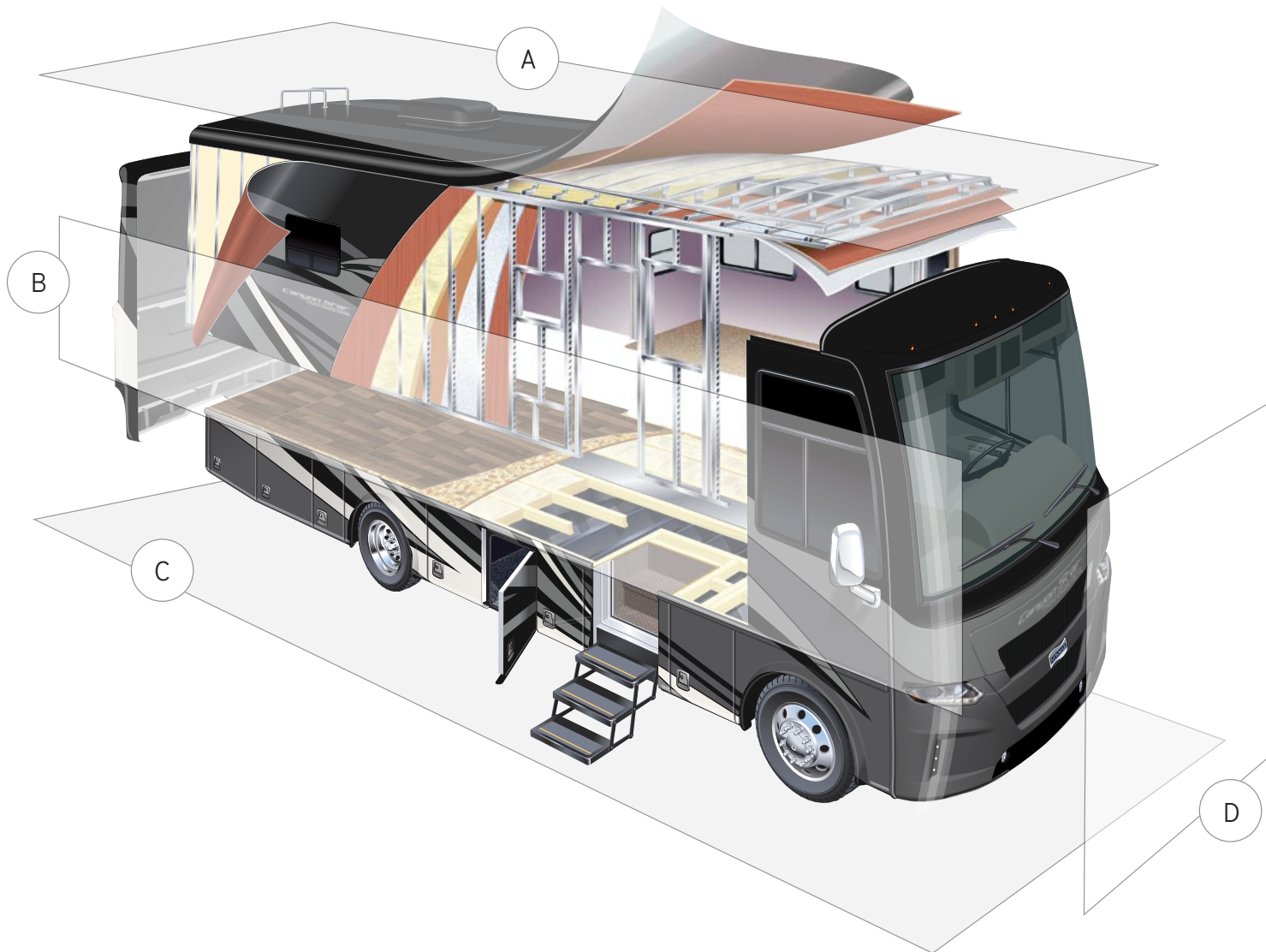
When you join the Newmar family, we pair you with a dedicated service specialist with expert knowledge of your exact coach. Available 24/7, our service specialists guarantee dealer warranty authorizations within four business hours and ship all in-stock parts the same day, free of charge.



## ROCK-SOLID PROTECTION

All models include a one-year/unlimited mileage limited warranty and a five-year, non-transferable structural warranty that covers your coach's superstructure in the event it fails to perform.

**Ask your Newmar dealer for more details.**



## A. ROOF

---

One-Piece Fiberglass Roof  
 Batten Insulation  
 A/C Ducting  
 16" on Center Aluminum  
 Rafter Framing  
 Kraft Paper Vapor Barrier  
 5/8" Bead Foam  
 3/16" Panel  
 Padded Vinyl Overlay

## B. SIDEWALL

---

Interior Wall Panel  
 5/8" Bead Foam  
 Kraft Paper Vapor Barrier  
 Batten Insulation  
 Composite One-Piece  
 Gelcoat Exterior Wall  
 Aluminum Framing

## C. FLOOR

---

Vinyl Tile  
 5/8" Floor Decking  
 Fiberglass Batten Insulation  
 16" on Center Wood Framing  
 Polyethylene Moisture Barrier

## D. EXTERIOR

---

13.5M Penguin™  
 Central Air Conditioner  
 One-Piece Bonded Windshield  
 Coated Aluminum Wheels  
 Frameless, Double-Pane,  
 Tinted Safety Glass Windows  
 Side-Hinged Baggage Doors

# Our Partners

Newmar Quality Begins with the Company We Keep

You deserve class-leading performance from names you can trust. That's why we only work with suppliers dedicated to providing our customers with unrivaled quality, comfort, and support.



Driven By You

## FREIGHTLINER CUSTOM CHASSIS

Freightliner Custom Chassis Corp. (FCCC) is renowned for delivering the industry's best ownership experience through exceptional 24/7 factory-direct support, exceptional ride and handling, and developing high-performance innovations such as DRIVETECH. It's the only RV driving system that prioritizes safety and automotive luxury by putting every command at your fingertips.



## SPARTAN RV CHASSIS

Designs, engineers, and assembles by hand each Spartan chassis for the best ride and handling in the industry. Spartan's leading safety ratings and ongoing investment in R&D give Spartan chassis owners superior performance and higher coach resale values. Spartan is American owned and has earned the trust of discerning RV owners based on its premium products and award-winning customer service.



We create chemistry

## BASF

A world full of colors! The Coatings Division of BASF develops, produces and markets a high-quality range of innovative and sustainable automotive OEM coatings and automotive refinishes.



## INDUSTRIAL FINISHES

Industrial Finishes has supported RV manufacturers for over four decades. The Industrial Finishes paint process delivers uncompromising quality, providing your coach with a true "Masterpiece" finish.



## RIVERPARK

RiverPark proudly represents the leading brands in consumer electronics—brands you know and trust to provide exceptional quality and innovative technology. Newmar features Samsung's incredible 4K TVs with Bose soundbars, Xite Infotainment systems featuring Rand McNally Navigation and JBL and Infinity premium audio. Step into a 2021 Newmar and experience dazzling audio and video performance throughout!



# Our People Take It Personally

Since Newmar was founded in 1968, our goal has been to build a better RV.

We have always believed that traveling shouldn't mean leaving behind the comforts you enjoy, so our coaches are crafted to be residential-quality homes—complete with handmade cabinetry and designer décors.

Every Newmar is built by hand, one at a time, by men and women who have dedicated years to creating superior-quality coaches that surpass their mass-produced competition.

We don't want to simply ask you to trust us when we talk about the Newmar difference. We want to prove it, every single time you hit the road. Because we take pride in the responsibility of designing, engineering, and constructing your motorhome.

And we know you'll be proud driving one on the way to your next destination.

When You Know the Difference.



Newmar Corporation | 355 N Delaware St | PO Box 30 | Nappanee, IN 46550-0030 | 574-773-7791 | Fax 574-773-2895

[NewmarCorp.com](http://NewmarCorp.com)