

CLASS-A

ALLEGRO RED 340

MODEL YEAR 2023 | PRODUCT UPDATES

Initial MY2023 Model Change Plans, Subject to Change in Full Production

Date Revised: 5/31/22

TIFFIN

20
23

What's New Summary - Allegro Red 340

WHAT'S NEW

- Two New Fabric Suites (Moondance & Stonewashed)
- Two New Ultraleather Colors (Trail & Taupe Hills)
- Sea Grass Luxury Vinyl Tile
- Generation 2 Paint Schemes
- Euro Blue, Frosted Granite, Rocky Mountain Brown, & 50th Anniversary Exterior Paint Color Packages
- 50th Anniversary Decal
- Removed Molded-in Shower Seats
- Updated Dinette Boothe Seating for Lift Up Seat Storage Access
- New Wi-Fi Booster
- New 14.5' Lippert™ On-The-Go™ Ladder
- Updated Logo to Mirror RED 360 Look
- Spyder Mira App Now Available
- Updated Dinette Computer Workstation Option

NO LONGER AVAILABLE

- Khaki Shade II & Resort Tan III Fabric Suites
- Sand Castle Floor Tile
- Generation 1 Paint Schemes
- Belgian and Cocoon Ultraleather Colors
- Dusk Blue, Slate Gray, & Macademia Exterior Color Packages

Premium Paint System

Our eight-step, full-body paint system features premium grade paints sealed with three layers of superclear coat with ultraviolet protection. An additional layer of high-performance film protects the front of the coach and select areas.

NO LONGER AVAILABLE

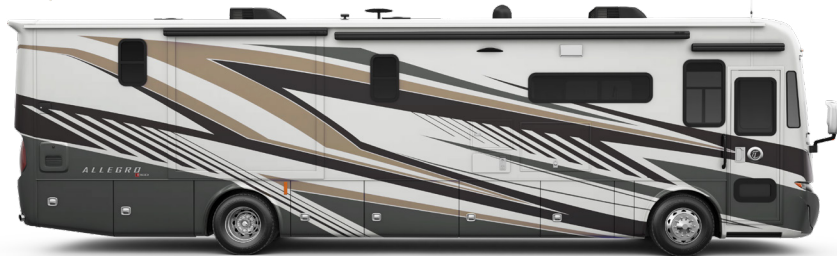
- Generation 1 Paint Schemes

Initial MY2023 Model Change Plans, Subject to Change in Full Production



50TH ANNIVERSARY

NEW

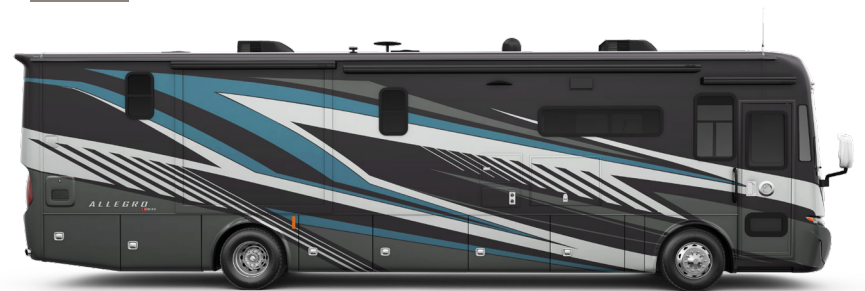


NEW



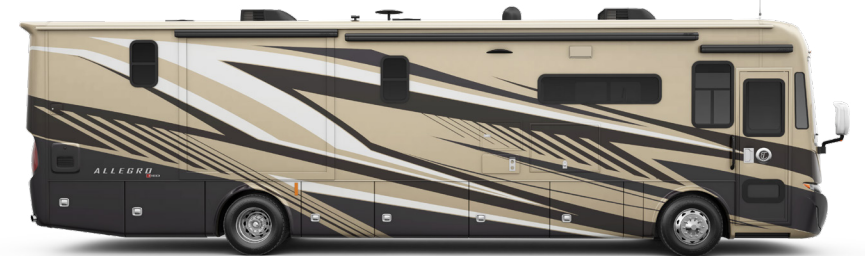
G2 SCARLET THUNDER

NEW



G2 EURO BLUE

NEW



G2 ROCKY MOUNTAIN BROWN

NEW



G2 FROSTED GRANITE

Floor Plans



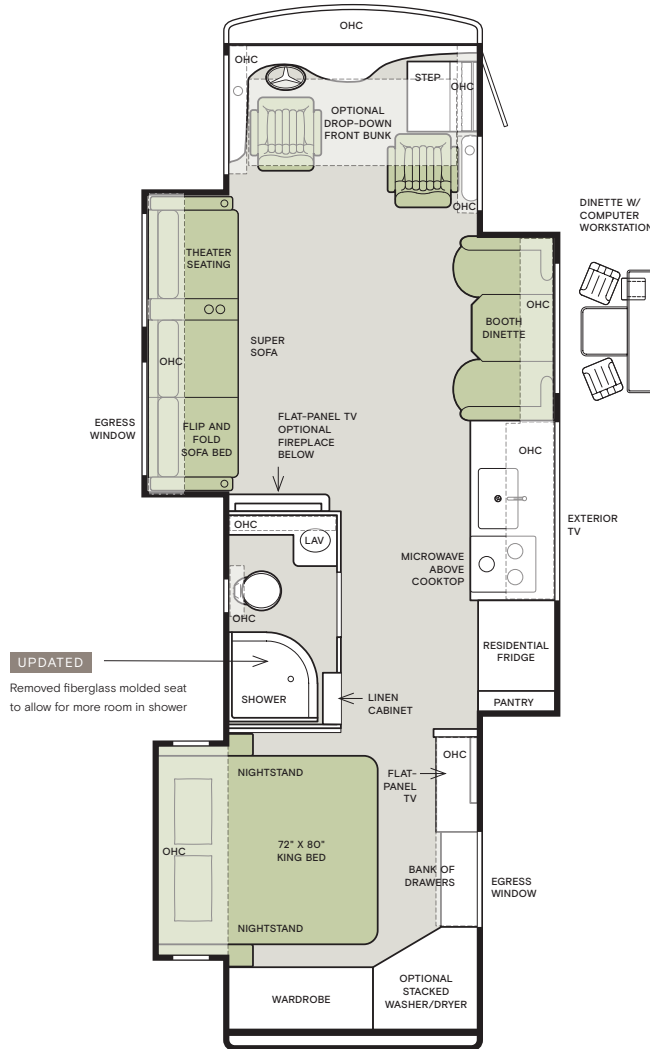
The design of every Allegro RED 340 floor plan must meet four essential criteria: Maximum space, Optimal organization, Relaxation plus, and Elegant atmosphere. Tiffin's MORE Plans offer your family the most comfortable layout for life on the road.

If optional furniture combinations are selected, window locations may vary from diagram shown.

All options may not be available in every model. Because of progressive improvements and specifications, standard and optional equipment are subject to change without notice or obligation.

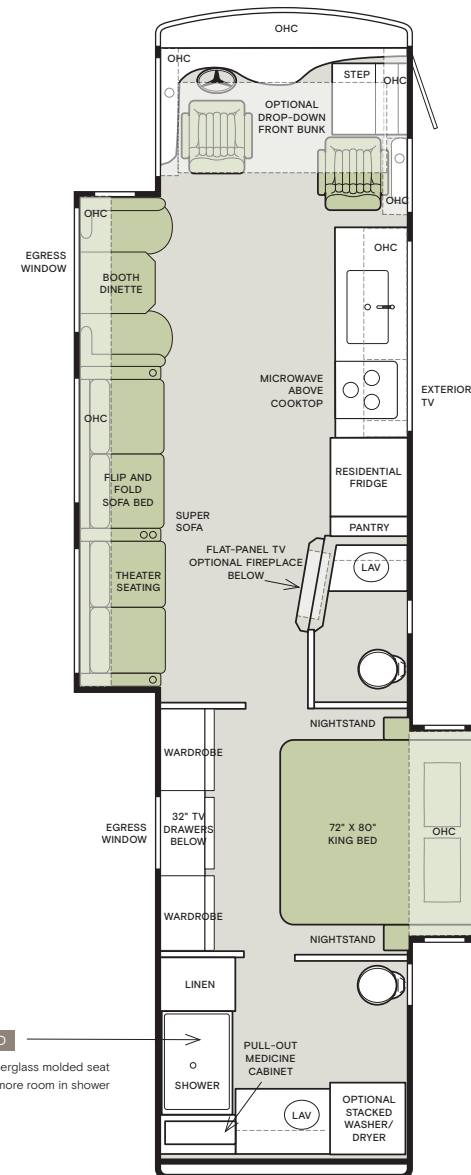
For a complete and up-to-date list of available options and specifications, visit tiffinmotorhomes.com.

33 AL



UPDATED
Removed fiberglass molded seat to allow for more room in shower

38 LL



UPDATED
Removed fiberglass molded seat to allow for more room in shower

Interior Décor

Make your experience on the road all your own. Express yourself by choosing the interior appointments such as cabinet finishes, flooring, and décor ensembles for every part of your motorhome. In the 2023 Allegro RED 340, you'll be able to travel in style no matter where you go.

CABINETS



NATURAL ALDER

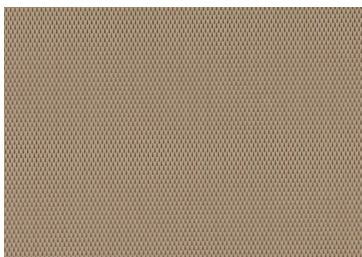
FLOORING



SEAGRASS Matte Finish Tile

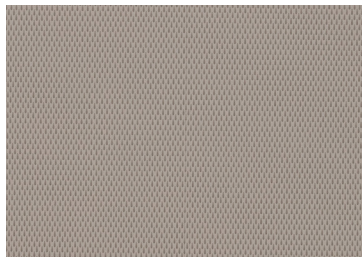
NEW

ULTRALEATHER



TRAIL (S)

NEW

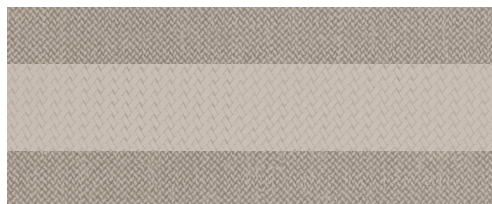


TAUPE HILL (O)

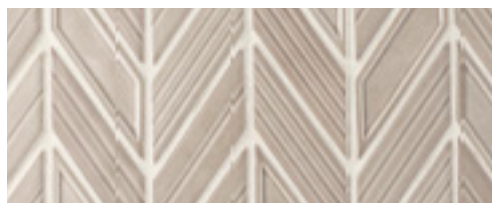
NEW

MOONDANCE

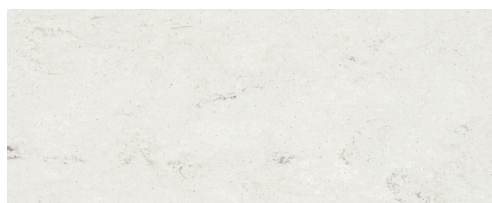
NEW



WINDOW TREATMENT



BACKSPLASH



COUNTERTOP



LIVING ROOM



MASTER SUITE

STONEWASHED

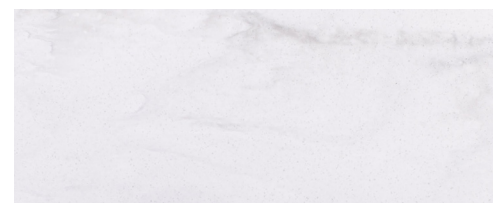
NEW



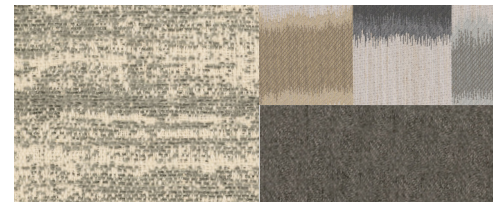
WINDOW TREATMENT



BACKSPLASH



COUNTERTOP



LIVING ROOM



MASTER SUITE

Specifications

| WEIGHTS AND MEASURES | 33 AL | 38 LL |
|--|--------------|--------------|
| Overall Length (approx.) ¹ | 35'2" | 39'6" |
| Overall Width ¹ | 101" | 101" |
| Overall Height | 12'10" | 12'10" |
| Minimum Garage Height | 14' | 14' |
| Interior Height | 84" | 84" |
| Interior Width | 96" | 96" |
| Wheel Base | 198" | 252" |
| Tire Size | 225/80 R22.5 | 225/80 R22.5 |
| GAWR-Front (pounds) | 10,000 | 10,410 |
| GAWR-Rear (pounds) | 18,000 | 17,590 |
| GVWR (pounds) | 28,000 | 28,000 |
| Hitch Rating (pounds) ² | 5,000 | 5,000 |
| GCWR (pounds) | 33,000 | 33,000 |
| Basement Storage (cubic feet, approx.) | 71 | 118 |
| Fresh Water (gallons) | 70 | 70 |
| Black Water (gallons) | 50 | 50 |
| Grey Water (gallons) | 65 | 65 |
| Fuel Tank (gallons) | 90 | 90 |
| DEF Tank (gallons) ³ | 13 | 13 |
| LPG Tank (gallons) ⁴ | 24 | 24 |
| Alternator Amps | 160 | 160 |

¹ The approximated coach width and length does not include side-view mirrors and rear ladders.

² Maximum Trailer Weight is dependent on the loading and towing variables which include the GVWR, GAWR, and GCWR, as well as adequate trailer brakes.

³ Diesel Exhaust Fluid (DEF) is the active component used in Selective Catalytic Reduction (SCR) engines to reduce nitrogen oxide emissions by 90% to meet EPA standards.

⁴ LPG tank can only be filled to 80% capacity.

CHASSIS AND DRIVETRAIN

- Freightliner® XCS Straight Rail Rear Engine Diesel Chassis with RoadWatch
- Cummins® B6.7 Engine 340HP/700 lb-ft Torque
- Allison® 2500 MH 6-speed Automatic Transmission with Lock-up Torque Converter
- Air Ride Suspension System
- Full Air Brakes
- Exhaust Brake
- Four Aluminum Wheels
- Air Leveling System
- Adaptive Cruise Control
- Collision Mitigation with Forward Warning and Active Braking
- Tire Pressure Monitoring
- Automatic Traction Control
- Electronic Stability Control with Roll Stability Support

PLUMBING

- Tank Level Monitoring System
- Heated Holding Tank Compartment
- Aquaview ShowerMiser
- Truma® Gas Continuous Water Heater ¹ **UPDATED**

¹ Now controlled through the Spyder Multiplex Control Panel

ELECTRICAL

- 8.0-Kilowatt Onan® Generator
- Spyder Controls Multiplex System ¹ **UPDATED**
- 2000-Watt Pure Sine Inverter
- Two 15,000-BTU Roof Air Conditioners
- Prep for Solar Panels
- Four 6-Volt House Batteries
- 50-Amp Service

| ELECTRICAL OPTIONS | 33 AL | 38 LL | |
|------------------------------|--------------------------|-------|---|
| Satellite | Prep for Satellite | S | S |
| | In-motion Satellite Dish | O | O |
| Wi-Fi Booster UPDATED | O | O | O |

¹ Spyder Multiplex Controls now with mobile app capability.

DRIVER'S COMPARTMENT

- Tilt and Telescoping Steering Wheel with Integrated Controls
- Power Suspended Adjusted Throttle and Brake Pedals
- Ceiling Mounted Speakers
- Six-way Power Driver and Passenger Seats
- Digital Dash Cluster
- Stereo with AM & FM Radio, CD Player, and Satellite Radio ¹
- Back-up Camera Color Monitor
- Storage Drawer in Dash
- Power Solar and Privacy Windshield Shades
- Manual Solar and Privacy Shades on Side Windows
- In-dash Navigation System

| DRIVER'S COMPARTMENT OPTIONS | 33 AL | 38 LL |
|------------------------------|-------|-------|
| Front Overhead Bunk | O | O |

¹ Subscription required for satellite radio.

EXTERIOR

- Full-body Paint
- Generation 2 Paint Schemes ¹ **NEW**
- Fiberglass Front and Rear Caps
- High Performance Film on Front Cap and Select Areas
- Undercoating
- Charcoal Carpet Cargo Walls
- Tinted One-piece Windshield
- Double Electric Step
- Horizontal Mounted Wipers
- Convenient Compartment Doors with Gas Shocks
- Single Handle Lockable Storage Door Latches
- Power Patio Awning
- Patio Side Exterior TV
- Heated Power Mirrors
- Exterior Patio Light
- Awning(s) over Slide-outs
- Redesigned Product Logo **UPDATED**
- 50th Anniversary Decal **NEW**

| EXTERIOR OPTIONS | 33 AL | 38 LL |
|---|--------------|-------|
| 14.5' Lippert™ On-The-Go™ Ladder ² | NEW O | O |

¹ Gen 1 Paint Schemes will no longer be available.

² All units will ship with a Lippert On-The-Go™ Prepped Receiver installed.

INTERIOR

- Smoke Detector
- Carbon Monoxide Detector
- LPG Leak Detector
- Ball Bearing Drawer Slides
- Solar and Privacy Shades
- LED Lighting
- Soft Touch Vinyl Ceiling
- BluRay® Player
- Flat-panel TV in Entertainment Center with Soundbar
- Power Roof Vents
- Manual Step Cover **UPDATED**
- Treated Carpet and Fabric
- Fire Extinguisher

| INTERIOR OPTIONS | 33 AL | 38 LL | |
|----------------------------|---------------|--------------|---|
| Fabric Suites ¹ | Moondance | NEW O | O |
| | Stonewashed | NEW O | O |
| Handcrafted Cabinetry | Natural Alder | O | O |
| Ultraleathers ² | Trail | NEW S | S |
| | Taupe Hill | NEW O | O |
| Floor Tiles ³ | Seagrass | NEW S | S |
| Central Vacuum Cleaner | O | O | |
| Stacked Washer and Dryer | O | O | |
| Fireplace | O | O | |

¹ Khaki Shade and Resort Tan will no longer be available.

² Belgian and Cocoon will no longer be available.

³ Matte Finish, Sand Castle will no longer be available.

KITCHEN

- Solid Surface Galley Countertop
- Large Kitchen Sink with Single Level Faucet
- Residential Refrigerator ¹ **UPDATED**
- Convection Microwave with Exterior Venting

| KITCHEN OPTIONS | 33 AL | 38 LL | |
|--------------------|----------------------|-------|---|
| Cooking Appliances | Three Burner Cooktop | S | S |
| | Oven with Cooktop | O | O |

¹ Gas/Electric Refrigerator no longer available.

DINETTE/LIVING AREA

| DINETTE/LIVING AREA OPTIONS | 33 AL | 38 LL | |
|-----------------------------|--|-------|---|
| Driver Side Furniture | Ultraleather Super Sofa | S | S |
| | Ultraleather Booth Dinette/Sleeper ¹ UPDATED | — | S |
| Passenger Side Furniture | Ultraleather Booth Dinette/Sleeper ¹ UPDATED | S | — |
| | Dinette Computer Workstation ² | O | — |

¹ Now with lift-up seat storage access.

² Printer bump-out no longer available.

BEDROOM

- Solar and Privacy Shades
- Memory Foam King Mattress (72" x 80")
- Flat-panel TV

BATHROOM

- Medicine Cabinet
- Molded Fiberglass One-Piece Shower ¹ **UPDATED**
- Roof Vent Fan

¹ Removed fiberglass molded seat to allow for more room in shower.

Because of progressive improvements and specifications, standard and optional equipment are subject to change without notice or obligation. For a complete and up-to-date list of available options and specifications, visit tiffinmotorhomes.com.

1

YEAR OR 12,000 MILES
LIMITED WARRANTY

5

YEARS OR 50,000 MILES
DELAMINATION
LIMITED WARRANTY

10

YEARS OR 50,000 MILES
CONSTRUCTION
LIMITED WARRANTY

1

YEAR COACH
ROADSIDE SERVICE

∞

ONGOING
CUSTOMER SUPPORT



TIFFIN

MOTORHOMES

FOR PARTS & SERVICE CALL 256.356.0261 OR VISIT TIFFINMOTORHOMES.COM | 105 2ND ST NW RED BAY, AL 35582  

©2021 Tiffin Motorhomes, Inc. Allegro®, Allegro Breeze®, Allegro RED®, Phaeton®, Allegro Bus®, Zephyr®, Wayfarer®, Roughing It Smoothly®, Open Road®, PowerGlide®, Pusher® and Cahaba® are registered trademarks of Tiffin Motorhomes, Inc. All rights reserved.
For all information concerning the limited warranty provided by Tiffin, please refer to the full written limited warranty set forth on the Tiffin website or held by our authorized dealerships. Please note, some interior furnishings not included.