

CLASS-A

ALLEGRO RED 360

MODEL YEAR 2023 | PRODUCT UPDATES

Initial MY2023 Model Change Plans, Subject to Change in Full Production

Date Revised: 10/12/22

TIFFIN

20
23

What's New Summary - Allegro RED 360

WHAT'S NEW

- | | | |
|--|--|--|
| <ul style="list-style-type: none">• Two New Fabric Suites (Stoney Creek & Soft Suede)• Two New Ultraleather Colors (Trail and Taupe Hills)• Two New Tiles (Vicinity Natural & Contessaora)• Generation 5 Paint Schemes• 50th Anniversary Exterior Paint Color Packages• 50th Anniversary Decal• Foot Ledge in Shower | <ul style="list-style-type: none">• Updated Dinette Boothe Seating for Lift Up Seat Storage Access• New Wi-Fi Booster• Cellular Signal Booster Now Available• Centralized Entertainment Center Now Located Behind Bedroom TV on 37 BA & 38 KA• AGM Battery Option Now Available• Updated Furniture Styling• Updated Black Hardware and Plumbing Fixtures | <ul style="list-style-type: none">• Updated Dinette Computer Workstation Option• New 14.5' Lippert™ On-The-Go™ Ladder• Freestanding Recliner and Sofa Locations Now Swapped on 33 AA• Chrome Dryer Vents• Truma AquaGo™ Comfort Instant Water Heater Now Controllable Through the Spyder System Control Panels |
|--|--|--|

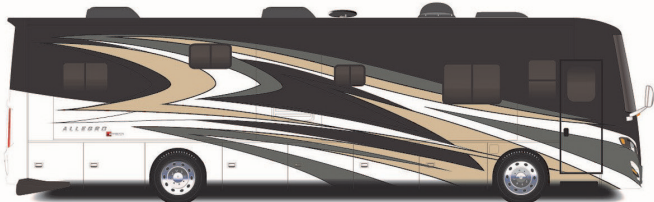
NO LONGER AVAILABLE

- | | | |
|--|---|--|
| <ul style="list-style-type: none">• 37 PA Floorplan• Urban Putty II, Dark Brew II, Silver Light III Fabric Suites | <ul style="list-style-type: none">• Belgian and Cocoon Ultraleather Colors• Vicinity & Articulo White Tile | <ul style="list-style-type: none">• L-Shapes Sofa Furniture Options• Molded-in Shower Seats |
|--|---|--|

Because of progressive improvements and specifications, standard and optional equipment are subject to change without notice or obligation. For a complete and up-to-date list of available options and specifications, visit tiffinmotorhomes.com.

Premium Paint System

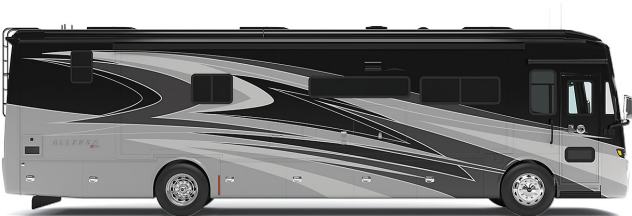
Our eight-step, full-body paint system features premium grade paints sealed with three layers of clear coat with ultraviolet protection. An additional layer of high-performance film protects the front of the coach and select areas.



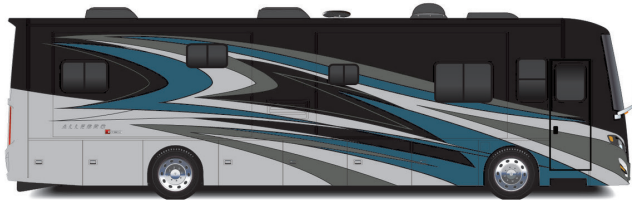
50TH ANNIVERSARY

NEW

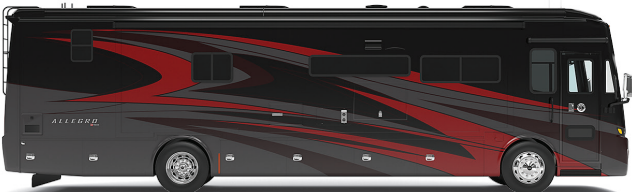
GENERATION 4



G4 NASA



G4 EURO BLUE



G4 FIRE OPAL



G4 RUSTIC CANYON



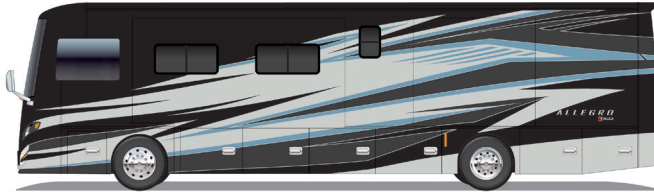
G4 FROSTED GRANITE

GENERATION 5



G5 NASA

NEW



G5 EURO BLUE

NEW



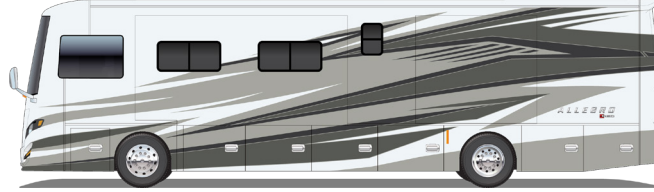
G5 FIRE OPAL

NEW



G5 RUSTIC CANYON

NEW

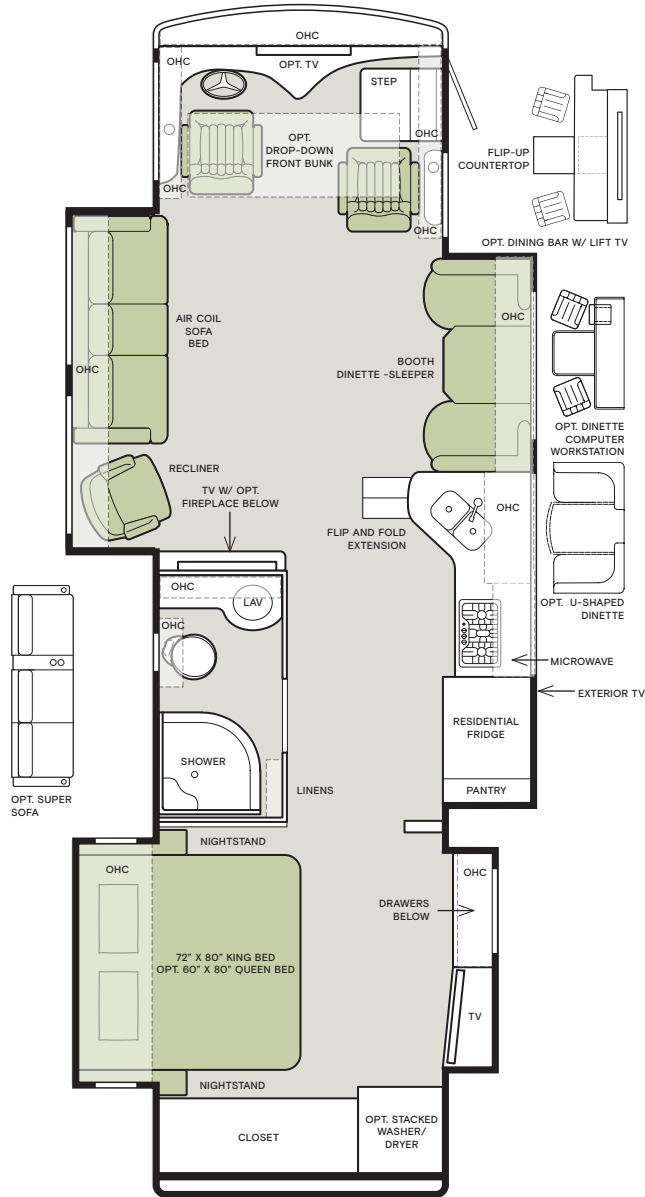


G5 FROSTED GRANITE

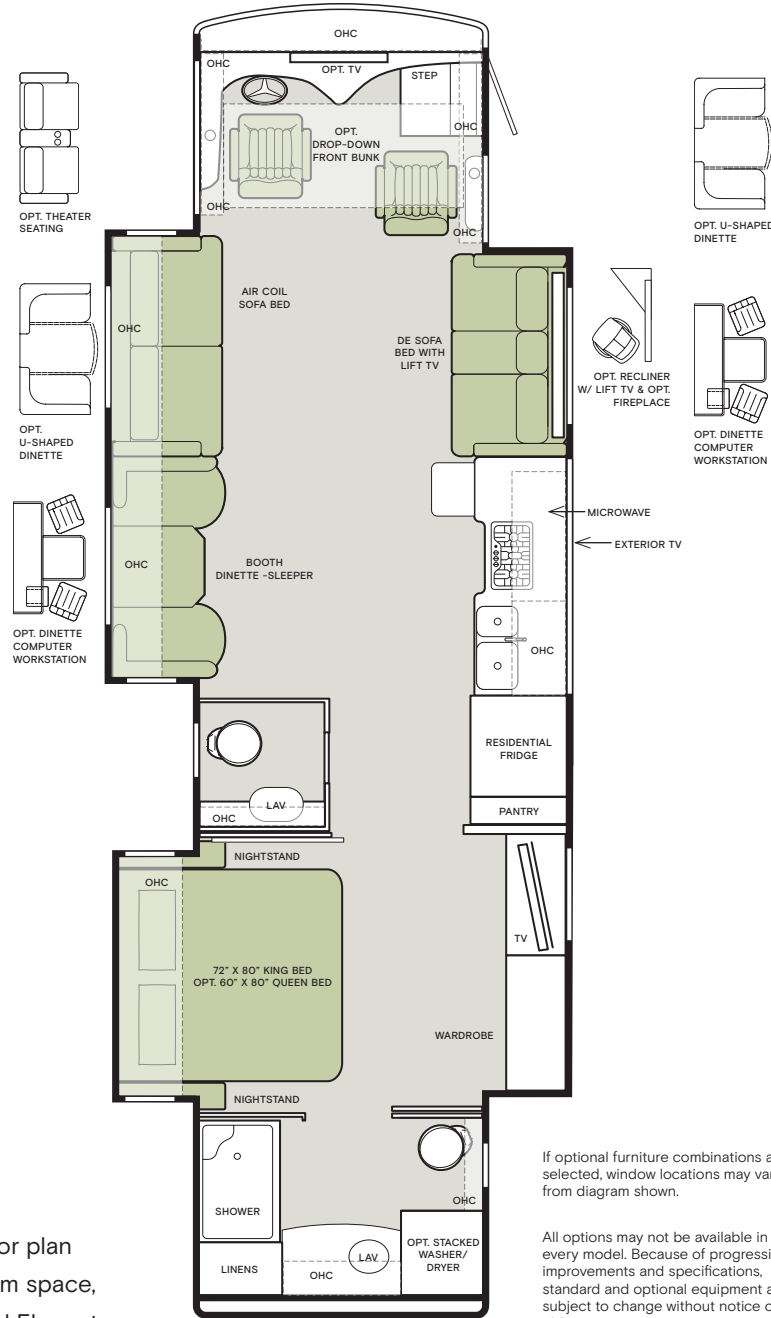
NEW

Images shown are representations of paint layouts only and do not reflect all exterior features or options. Colors shown may slightly differ from colors on actual product.

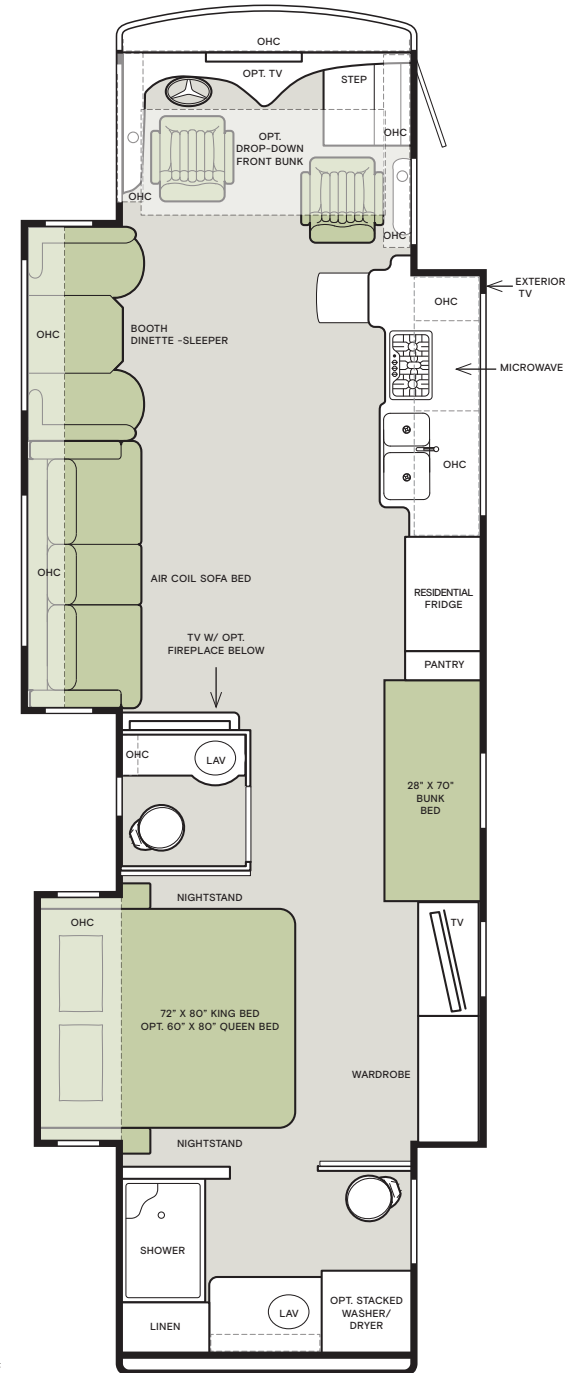
33 AA



37 BA



38 KA



Floor Plans



The design of every Allegro RED 360 floor plan must meet four essential criteria: Maximum space, Optimal organization, Relaxation plus, and Elegant atmosphere. Tiffin's MORE Plans offer your family the most comfortable layout for life on the road.

If optional furniture combinations are selected, window locations may vary from diagram shown.

All options may not be available in every model. Because of progressive improvements and specifications, standard and optional equipment are subject to change without notice or obligation.

For a complete and up-to-date list of available options and specifications, visit tiffinmotorhomes.com.

Interior Décor

Make your experience on the road all your own. Express yourself by choosing the interior appointments such as cabinet finishes, flooring, and décor ensembles for every part of your motorhome. In the 2023 Allegro RED 360, you'll be able to go in style no matter where you go.

Because of progressive improvements and specifications, standard and optional equipment are subject to change without notice or obligation. For a complete and up-to-date list of available options and specifications, visit tiffinmotorhomes.com.

CABINETS



AMBER GLAZED ¹

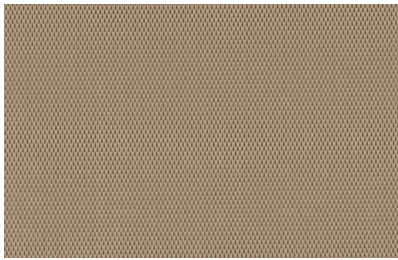


SHADOW ²



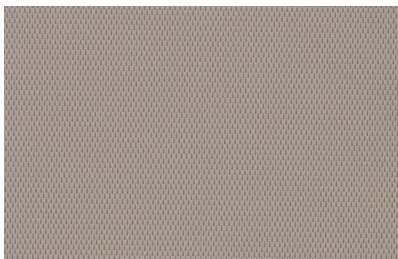
NATURAL ALDER ¹

ULTRALEATHER



TRAIL

NEW



TAUPE HILLS

NEW

FLOOR TILE



VICINITY NATURAL (S)
Matte Finish Tile

NEW



CONTESSAORA (O)
Glossy Finish Tile

NEW

¹ Amber Glazed and Natural Alder cabinetry stains require Vicinity Natural tile.

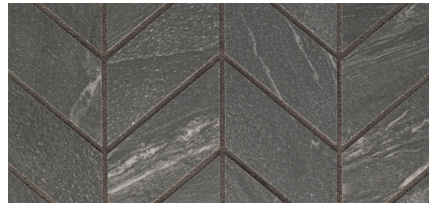
² Shadow cabinetry stain requires Contessaora tile.

Colors of interior decor options shown may vary from colors on actual product.

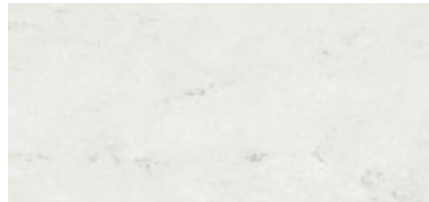
STONEY CREEK NEW



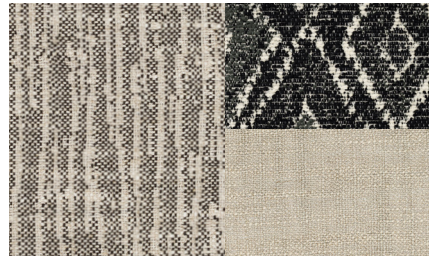
WINDOW TREATMENT



BACKSPLASH



COUNTERTOP



LIVING ROOM

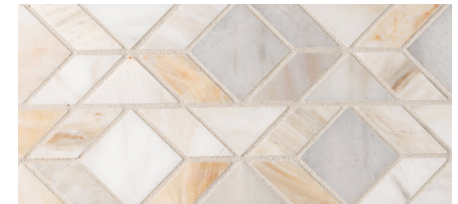


MASTER SUITE

SOFT SUEDE NEW



WINDOW TREATMENT



BACKSPLASH



COUNTERTOP



LIVING ROOM



MASTER SUITE

Specifications, Features, and Options

KEY : S : Standard Feature | O : Optional Feature; Additional costs may apply | D : Dependent; Availability is dependent on selection of another option | — : Not Available

WEIGHTS AND MEASURES	33 AA	37 BA	38 KA
DIMENSIONS			
Overall Length (approx.) ¹	35' 2"	38' 6"	39' 6"
Overall Width ¹	101"	101"	101"
Overall Height	12' 10"	12' 10"	12' 10"
Minimum Garage Height	14'	14'	14'
Interior Height	84"	84"	84"
Interior Width	96"	96"	96"
Basement Storage (cubic feet, approx.)	84	119	119
Wheel Base	198"	234"	252"
WEIGHT LIMITS			
GAWR-Front (pounds)	14,320	14,320	14,320
GAWR-Rear (pounds)	23,000	23,000	23,000
GVWR (pounds)	37,320	37,320	37,320
Maximum Trailer Weight (pounds) ²	10,000	10,000	10,000
Hitch Rating (pounds)	10,000	10,000	10,000
GCWR (pounds)	47,320	47,320	47,320
CAPACITIES			
Fuel Tank (gallons)	100	100	100
DEF Tank (gallons) ²	13	13	13
Fresh Water (gallons)	90	90	90
Grey Water (gallons)	70	70	70
Black Water (gallons)	50	50	50
LPG Tank (gallons) ⁴	36	36	36

¹ The approximated coach width and length does not include side-view mirrors and rear ladders.

² Maximum trailer weight is dependent on the loading and towing variables which include the GVWR, GAWR, and GCWR, as well as adequate trailer brakes.

³ Diesel Exhaust Fluid (DEF) is the active component used in Selective Catalytic Reduction (SCR) engines to reduce nitrogen oxide emissions by 90% to meet EPA standards.

⁴ LPG tank can only be filled to 80% capacity.

CHASSIS AND DRIVETRAIN
<div><ul style="list-style-type: none">• Freightliner® XCM Modular Rail Rear Engine Diesel Chassis• Cummins® B6.7 360 HP Diesel Engine with 800 lb-ft Torque¹• 160-Amp Alternator• Allison® 3000 MH 6-speed Automatic Transmission with Lock-up Torque Converter• Aluminum Wheels</div> <div><ul style="list-style-type: none">• Front and Rear 275/80 R22.5 Tires• (2) 12-Volt Flooded Lead-Acid Chassis Batteries• Hydraulic Leveling Jacks• Air Ride Suspension System• Rear Radiator• Front Disc Brakes and Rear Drum Brakes• Full Air Brake System with Automatic Slack Adjusters</div> <div><ul style="list-style-type: none">• Single Stage Variable Geometry Turbocharger (VGT) Engine Brake• Manual Parking Brake• Dual Fuel Fill Capable• Tire Pressure Monitoring• Adaptive Cruise Control• Collision Mitigation with Forward Warning and Active Braking• Automatic Traction Control• Electronic Stability Control</div>

¹ Peak horsepower achieved at 2,600 RPM. Peak torque achieved at 1,800 RPM.

ELECTRICAL				
<ul style="list-style-type: none">• Spyder Controls Multiplex System Featuring App Compatibility• 8.0-Kilowatt Onan® Quiet Diesel Generator• Generator Slide Tray• 2,000-Watt Pure Sine Wave Inverter with Auto-Gen Start and Interior Remote Control ¹• Battery Slide-out Tray• Extraordinaire™ Air Conditioning System		<ul style="list-style-type: none">• 50-Amp Shore Power• Prep for Satellite• Auxiliary Solar Port• BluRay® Player• Satellite Reciever• Park Cable and Ground Satellite Hook-up• HD Over-the-air Antenna ²• 12-Volt Breaker Panel		<ul style="list-style-type: none">• 12-Volt Disconnect Switch• Rotary Disconnect Switches for House Batteries, Chassis Batteries, and Inverter• Ground Fault Circuit Interrupter (GFCI) Outlets at Galley, Lavatories, and Sewer Bay• 110-Volt Exterior Receptacle• Surge Guard® Transfer Switch• USB Receptacles Throughout Coach
ELECTRICAL OPTIONS		33 AA	37 BA	38 KA
Heating and Cooktop Power Source	Liquid Propane (LP) Coach ³	S	S	S
	All-Electric Coach ⁴	O	O	O
House Batteries	(6) 6-Volt Flooded Lead-Acid House Batteries	S	S	S
	(6) 6-Volt Extended Cycle AGM House Batteries	O	O	O
Air Conditioning	(2) 15,000-BTU Air Conditioners with Heat Pumps	S	S	S
	(2) 15,000-BTU Low Profile Air Conditioners with Heat Pumps and Condensation Drains	O	O	O
Heat Sources	(1) 35,000-BTU and (1) 30,000-BTU Ducted Furnaces ⁵	D	-	-
	(1) 30,000-BTU and (1) 20,000-BTU Ducted Furnaces ⁵	-	D	-
	(2) 30,000-BTU Ducted Furnaces ⁵	-	-	D
	Aqua-Hot® 250D Heat Exchanger ⁶	D	D	D
In-motion Satellite Dish ⁷		O	O	O
Prewiring for Winegard® Trav'ler™ Satellite ⁸		O	O	O
Solar Panels	Prep for Solar Panels ⁹	O	O	O
	(1) Solar Panel	O	O	O
	(3) Solar Panels	O	O	O
Cellular Signal Booster	NEW	O	O	O
Wi-Fi Booster	UPDATED	O	O	O

¹ Automatic generator start capabilities controlled through Spyder Controls Multiplex System.

² Requires subscription.

³ Propane is used to power the ducted furnaces, the water heater, and liquid propane cooktops.

⁴ Replaces the ducted furnaces, the Truma AquaGo™ water heater, and liquid propane cooktops with an Aqua-Hot® heat exchanger and induction cooktops. Removes LPG tank. All-electric coaches still require diesel for the engine and either shore power or a generator to operate air conditioning.

⁵ Standard with LP coach option.

⁶ Replaces ducted furnaces when all-electric coach option is selected. Aqua-Hot® heat exchanger provides both heated air and water.

⁷ High-definition programming is not available on a domed satellite antenna unless you subscribe to DISH Network®.

⁸ In-motion satellite dish and prewiring for Winegard® Trav'ler™ satellite cannot be optioned together on the 33 AA.

⁹ Includes docking ports for aftermarket solar panels.

PLUMBING						
<ul style="list-style-type: none">• Aqua View Showermiser™• Water Filter• Water Pump Switch Access from Spyder System and Sewer Bay Board• Low-point Water Drain Lines		<ul style="list-style-type: none">• Black Holding Tank Flush System• Gravity Water Fill• Heated Water and Holding Tank Compartment• Tank Level Monitor System		<ul style="list-style-type: none">• Centralized Exterior Sewer Bay with Gravity Black and Grey Evacuation Ports• Exterior Rinse Hose with Shower Head• Sewer Bay Hand Sanitizer and Paper Towel Holders		
ELECTRICAL OPTIONS				33 AA	37 BA	38 KA
Water Heater	Truma AquaGo™ Comfort Instant Water Heater ¹	UPDATED	D	D	D	
	Aqua-Hot® 250D Heat Exchanger ²		D	D	D	
Water Heater Bypass System ³			D	D	D	

¹ Now controllable through the Truma control panel and the Spyder System control panels. Standard with LP coach option.

² Replaces Truma AquaGo™ Comfort instant water heater when all-electric coach option is selected. Aqua-Hot® heat exchanger provides both heated air and water.

³ Standard with LP coach option. Not necessary with all-electric coach option.

Specifications, Features, and Options (Cont'd)

KEY : S : Standard Feature | O : Optional Feature; Additional costs may apply | D : Dependent; Availability is dependent on selection of another option | — : Not Available

EXTERIOR				
<div><div><ul style="list-style-type: none">• Full-body Paint with (3) Layers of Clear Coat• Seamless One-piece Gel-coat Fiberglass Molded Roof Cap• One-piece Molded Gel-coat Fiberglass Front and Rear Caps• Rust Protective Undercoating• High Performance Protective Film on Front Cap and Select Areas• Girard® Powered Door Awning with Integrated LED Lighting• Girard® Slide-out Toppers• Steel Basement Construction• Side-Swinging Exterior Storage Doors with Gas Shocks</div><div><ul style="list-style-type: none">• Lockable Chrome Handles on Compartment Doors• Motion-sensor Lights in Cargo Bay• 120-Volt and 12-Volt Outlets Inside Cargo Bays• Charcoal Carpet Cargo Walls• Pass-through Basement Storage• Framed, Single-Pane Windows• Daytime Running Lights• Docking Lights• Exterior Patio Light• Fog Lights• Chrome Power Heated Side-View Mirrors with Integrated Cameras</div><div><ul style="list-style-type: none">• Exterior TV with Soundbar• Fast charge USB ports within Exterior TV Compartment• Manual Exterior TV Compartment Door• Deadbolt Front Entrance Lock• Entry Door Grab Handle• Automatic Double Entry Step• Front Door Entry System via Key Fob¹• Mud Flaps• Custom Rock Guard• Concealed Air Horn• Limited Edition 50th Anniversary Decal</div></div> <div><div>NEW</div></div>				
EXTERIOR OPTIONS		33 AA	37 BA	38 KA
Patio Awnings	(1) Girard® Side-mounted Powered Patio Awning with Integrated LED Lighting	S	S	S
	(1) Girard® Roof-mounted Powered Patio Awning with Integrated LED Lighting and Dual Pitch Feature	O	O	O
(1) Manual Storage Compartment Slide-out Tray ²				
Lippert™ On-The-Go™ Telescoping Ladder ³ <div>NEW</div>				
<div><div>¹ Entry system does not include exterior Spyder keypad.</div><div>² Trays slide out on both sides of motorhome.</div><div>³ All units will ship with a Lippert™ On-The-Go™ Prepped Receiver installed.</div></div>				

INTERIOR				
<div><div><ul style="list-style-type: none">• Handcrafted Cabinet Fascias and Doors with Concealed Hinges• (2) Flat-panel Televisions¹• Solid Surface Galley Countertop• Treated Carpet in Slide-out Floors• Handcrafted Slide-out Fascia</div><div><ul style="list-style-type: none">• Soft Touch Vinyl Ceiling• LED Lighting• Carbon Monoxide Detector• LPG Leak Detector• Smoke Detector</div><div><ul style="list-style-type: none">• Fire Extinguisher• Solar and Privacy Shades• Soft-closing Drawer Slides• Powered Roof Vents• Interior Grab Handle at Entry Door</div></div>				
OPTIONS		33 AA	37 BA	38 KA
Treated Fabric Suites ²	Soft Suede <div>NEW</div>	O	O	O
	Stoney Creek <div>NEW</div>	O	O	O
Ultraleathers ³	Taupe Hill <div>NEW</div>	O	O	O
	Trail <div>NEW</div>	O	O	O
Cabinetry Stain	Amber Glazed ⁴	O	O	O
	Natural Alder ⁴	O	O	O
	Shadow ⁵	O	O	O
Floor Tiles	Vicinity Natural Glazed Porcelain Tile ⁶ <div>NEW</div>	D	D	D
	Contessaora Glazed Porcelain Tile ⁷ <div>NEW</div>	D	D	D
Washer & Dryer	Prep for Washer and Dryer	S	S	S
	Stacked Washer and Dryer	O	O	O
Bedroom Egress Door				
Gold Heat® Dual Zones Heated Tile Floor				
Central Vacuum System				

¹ Located in living area and bedroom.

² Dark Brew II, Silver Light III, and Urban Putty II are no longer available.

³ Belgian and Cocoon are no longer available.

⁴ Amber Glazed and Natural Alder cabinetry stains require Vicinity Natural tile.

⁵ Shadow cabinetry stain requires Contessaora tile.

⁶ Vicinity and Articulo White floor tiles are no longer available. Vicinity Natural is not available with Shadow cabinetry stain.

⁷ Vicinity and Articulo White floor tiles are no longer available. Contessaora is required with Shadow cabinetry stain.

DRIVER'S COMPARTMENT				
Ultraleather Power Driver and Passenger Seats		• USB Dash Receptacles	• Stereo with AM & FM Radio, CD Player, and Satellite Radio ²	
Adjustable Seatbelt Brackets		• Driver-focused Wraparound Dash	• Ceiling Mounted Speakers	
Powered Passenger Seat Footrest		• Cupholders on Driver and Passenger Side	• Auxiliary Start Switch	
Tilt and Telescoping Steering Wheel with Integrated Controls		• Built-in Driver and Passenger Consoles with Rocker Switches	• Driver's Compartment Overhead Cabinets with Wooden Panel Doors	
Adjustable Accelerator and Brake Pedals		• Driver and Passenger Map Lights	• Manual Opening Driver Side Window	
Digital Dash Cluster		• One-piece Panoramic Windshield	• Powered Solar and Privacy Windshield Shade	
Backlit Dash Switches		• Single-motor Intermittent Windshield Wipers	• Manual Solar and Privacy Shades on Side Windows	
Storage Drawer in Dash		• Automatic LED Headlights	• Carpeted Step Well	
Dual Dash Fans		• Side-view Cameras ¹	• Powered Step Well Cover	
12-Volt Dash Receptacle		• Color Back-up Camera Monitor		
DRIVER'S COMPARTMENT OPTIONS		33 AA	37 BA	38 KA
In-dash Navigation System		O	O	O
CB Antenna		O	O	O
Front Overhead Drop-Down Bunk ³		O	O	O
Front Overhead TV		O	O	O
Windows	Solid, Non-opening Passenger Side Window	S	S	S
	Vertical Opening Passenger Side Window	O	O	O

¹ Integrated within side-view mirrors and activated by turn signals.

² Subscription required for satellite radio.

³ Drop-down bunk sleeps one comfortably and will decreases overhead storage capacity. Maximum weight limit of drop-down bunk is 250 pounds.

DINETTE AND LIVING AREA OPTIONS		33 AA	37 BA	38 KA
Drivers Side Furniture	Ultraleather Booth Dinette-Sleeper ¹ <div>UPDATED</div>	-	S	S
	Dinette Computer Workstation ² <div>UPDATED</div>	-	O	O
	Ultraleather U-shaped Dinette	-	O	O
	Overhead Dinette Cabinets	-	S	S
Passenger Side Furniture	Ultraleather Air Coil Sofa Bed and Ultraleather Recliner ³	S	-	-
	Ultraleather Super Sofa ⁴	O	-	-
	Ultraleather Air Coil Sofa Bed ³	-	S	S
	Theater Seating	-	O	O
	Mounted Flat-panel TV ⁵	D	-	S
	Fireplace	O	-	O
Passenger Side Dinette	Ultraleather Booth Dinette-Sleeper ¹ <div>UPDATED</div>	S	-	-
	Dinette Computer Workstation ² <div>UPDATED</div>	O	-	-
	Ultraleather U-shaped Dinette	O	-	-
	Dinette Bar with Lift TV ⁶	O	-	-
	Overhead Dinette Cabinets ⁵	D	-	-
Passenger Side Furniture	Ultraleather DE Sofa Bed with Lift TV ⁷	-	S	-
	Ultraleather Recliner and Lift TV	-	O	-
	Ultraleather Recliner and Lift TV with Fireplace	-	O	-
	Bunk Beds (28" x 70") ³	-	-	S

¹ Piece of furniture sleeps one comfortably. Now with lift-up seat storage access.

² Printer bump-out no longer available.

³ Piece of furniture sleeps two comfortably.

⁴ Consists of theater seating and a flip and fold sofa bed. Piece of furniture sleeps two comfortably.

⁵ Not available when lift TV is optioned.

⁶ Replaces mounted flat-panel TV.

⁷ Piece of furniture sleeps one comfortably.

Specifications, Features, and Options (Cont'd)

KEY : S : Standard Feature | O : Optional Feature; Additional costs may apply | D : Dependent; Availability is dependent on selection of another option | - : Not Available

KITCHEN

- Stainless Steel Residential Refrigerator
 - Stainless Steel Convection Microwave with Exterior Venting
- Double Bowl Kitchen Sink with Single Lever Faucet and Pull-down Sprayer
 - Panoramic Galley Window
 - LED Countertop Lighting
- Full Tile Backsplash
 - Solid Surface Galley Countertop, Sink, and Cooktop Cover

KITCHEN OPTIONS		33 AA	37 BA	38 KA
Cooking Appliances	Three-Burner Liquid Propane Cooktop ¹	D	D	D
	Oven Range with Liquid Propane Cooktop ²	D	D	D
	Two-Burner Induction Cooktop ³	D	D	D
Drawer-style Dishwasher ⁴		O	O	O
Extendable Countertops	Flip and Fold Countertop Extension	S	-	-
	Expand-An-Island	-	S	S

¹ Standard with LP coach option. Not available with all-electric coach option.
² Option with LP coach option. Replaces three-burner liquid propane cooktop when selected. Not available with all-electric coach option.
³ Standard with all-electric coach option. Not available with LP coach option.
⁴ Cannot option dishwasher and oven with cooktop together.

BEDROOM

- Under Bed Storage
 - Bedside Windows
 - Overhead Cabinet with Headboard
 - Bed Comforter with Throw Pillows
- Strategically-placed, Handcrafted Privacy Door
 - Nightstand with Solid Surface Tops
 - Mounted Flat-panel TV
- Centralized Entertainment Center¹
 - Ceiling Fan
 - Laundry Hamper

BEDROOM OPTIONS		33 AA	37 BA	38 KA
Mattress	Memory Foam King Mattress (72" x 80")	S	S	S
	Memory Foam Queen Mattress (60" x 80")	-	O	O
Bedroom Storage	Floor-to-ceiling Closet Space	S	-	-
	Wardrobe with Drawers Underneath	-	S	S

¹ Houses BluRay® player, satellite reciever, and cable TV hook-up.

BATHROOM

- (1) Porcelain Master Bathroom Sink
 - Solid Surface Lavatory Top
 - One-Piece Molded Fiberglass Shower¹
- Handheld Shower Head with Slide Bar
 - Shower Skylight
 - Shower LED Light with Sliding Cover
- Towel and Toilet Paper Holders
 - Mirrored Medicine Cabinet
 - Roof Vent Fan

BATHROOM OPTIONS		33 AA	37 BA	38 KA
Number of Bathrooms	(1) Bathroom	S	-	-
	(1) Bathroom and (1) Half-bath ²	-	S	S
Toilet	(1) Gravity Flush Toilet	S	-	-
	(1) Gravity Flush Toilet and (1) Macerator Toilet	-	S	S

¹ Added foot ledge and removed molded-in shower seats to allow for more room.
² All half-baths contain a toilet and a solid surface countertop with a single porcelain sink.

1

YEAR OR 12,000 MILES
LIMITED WARRANTY

5

YEARS OR 50,000 MILES
DELAMINATION
LIMITED WARRANTY

10

YEARS OR 50,000 MILES
CONSTRUCTION
LIMITED WARRANTY

1

YEAR COACH
ROADSIDE SERVICE

∞

ONGOING
CUSTOMER SUPPORT

FOR PARTS & SERVICE CALL 256.356.0261 OR VISIT TIFFINMOTORHOMES.COM

105 2ND ST NW RED BAY, AL 35582 [f](#) [i](#)



TIFFIN

MOTORHOMES

©2021 Tiffin Motorhomes, Inc. Allegro®, Allegro Breeze®, Allegro RED®, Phaeton®, Allegro Bus®, Zephyr®, Wayfarer®, Roughing It Smoothly®, Open Road®, PowerGlide®, Pusher® and Cahaba® are registered trademarks of Tiffin Motorhomes, Inc. All rights reserved.
For all information concerning the limited warranty provided by Tiffin, please refer to the full written limited warranty set forth on the Tiffin website or held by our authorized dealerships. Please note, some interior furnishings not included.