



**AIRSTREAM**<sup>®</sup> Interstate 19

2024 TOURING COACHES

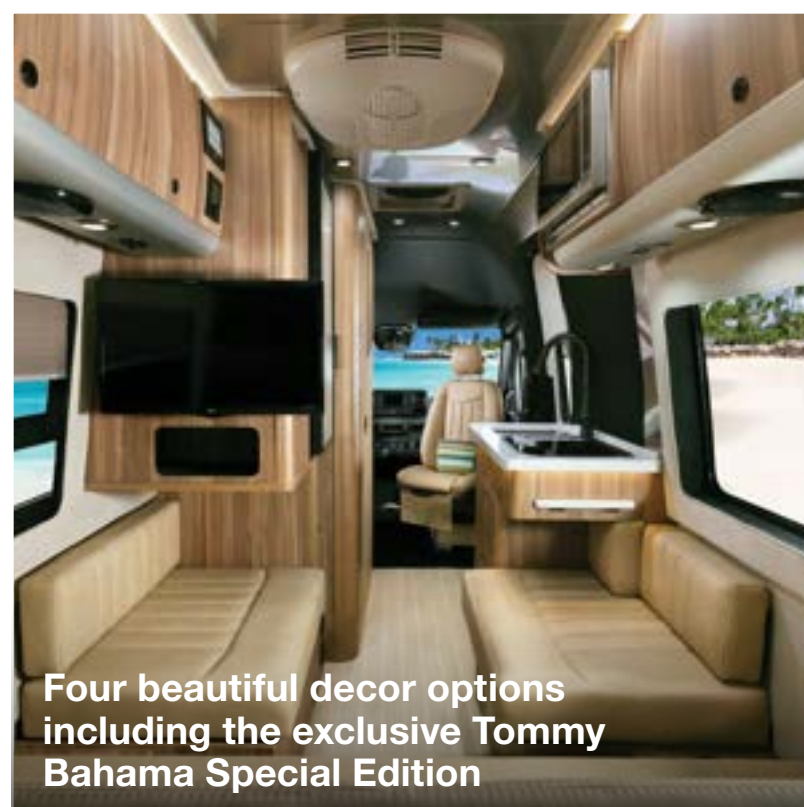


## About Interstate 19

Nimble and easy to maneuver, the Airstream Interstate 19 packs a lot into its small footprint. This motorized Airstream features all the quality, hand-made craftsmanship you expect, packed into the powerful, dependable 19-foot Mercedes-Benz Sprinter van chassis. Perfect for an urban adventure, hitting the road for a weeks-long road trip, or even as a daily driver for heading across town, Interstate 19 is versatile, functional, and gorgeous.

With belted seating positions for up to four passengers and sleeping space for two, Interstate 19 is made for couples and solo travelers who put a premium on versatility. Easily navigate parking lots and slide into standard parking spaces. Grab groceries, take the kids to the weekend soccer tournament (and bring along a bathroom and kitchen!), or hit the road to check off some bucket list destinations. As at home in the campsite as it is in the driveway, Interstate 19 delivers exceptional quality, expert use of space, and all the comforts of home – no matter where you take it.

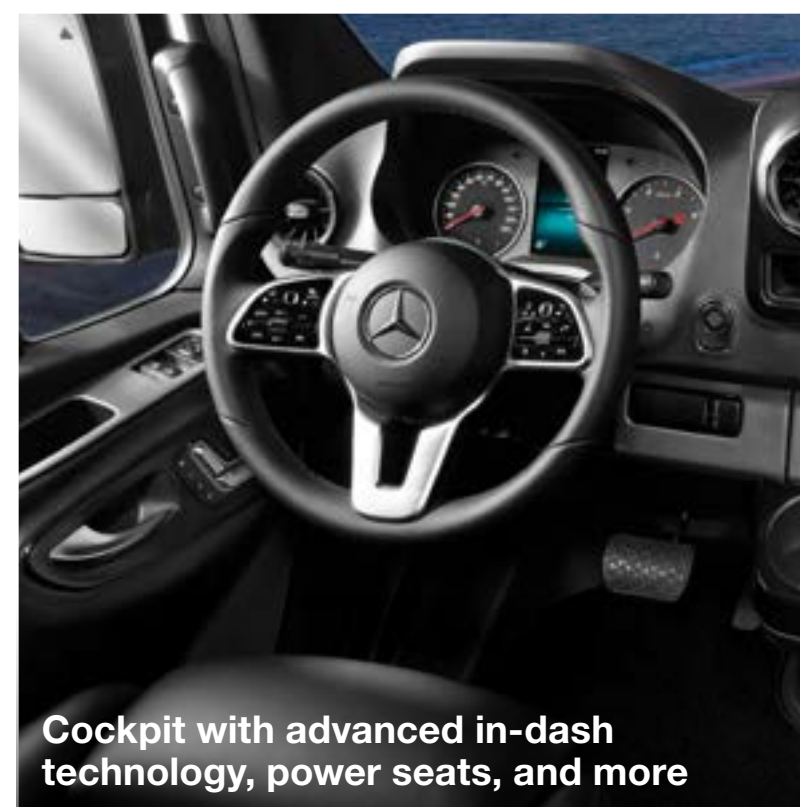
When it comes to safety and security, Interstate 19 has you covered with every available safety and performance feature offered by Mercedes-Benz® included as standard – not upgrade options. Once you arrive at your destination, conveniences like a full kitchen, an onboard bathroom, charging stations, and a flat screen TV let you enjoy your time in comfort and style. Prepare snacks and drinks on solid surface countertops in the galley. Store accessories in the European-style curved cabinetry. Relax on plush, easy-to-clean Ultraleather® seating surfaces. No matter where you turn, the Interstate 19 is ready to impress.



Four beautiful decor options including the exclusive Tommy Bahama Special Edition



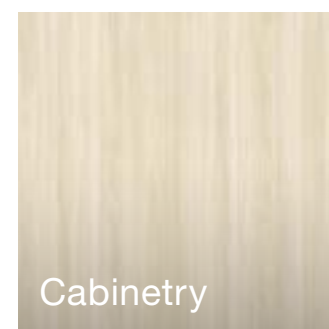
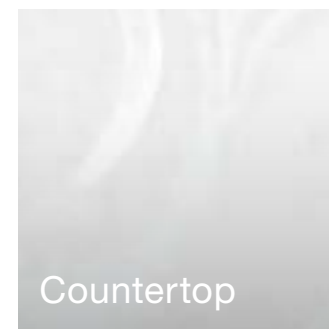
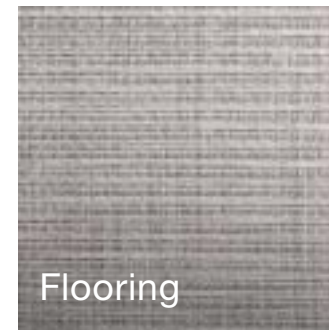
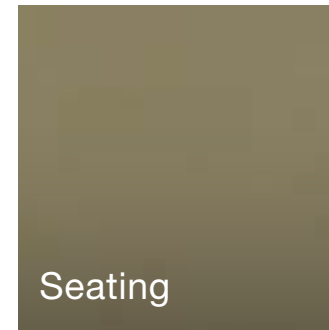
Incredible ease of entry with a push-button sliding door



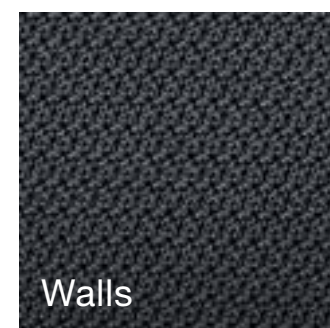
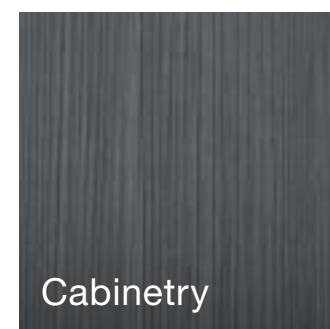
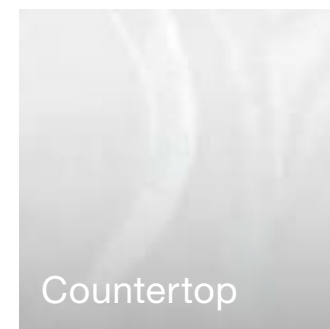
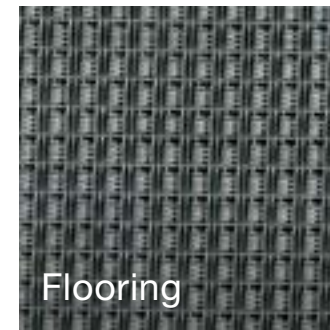
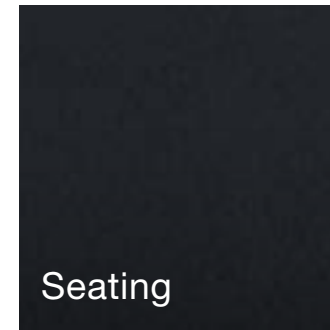
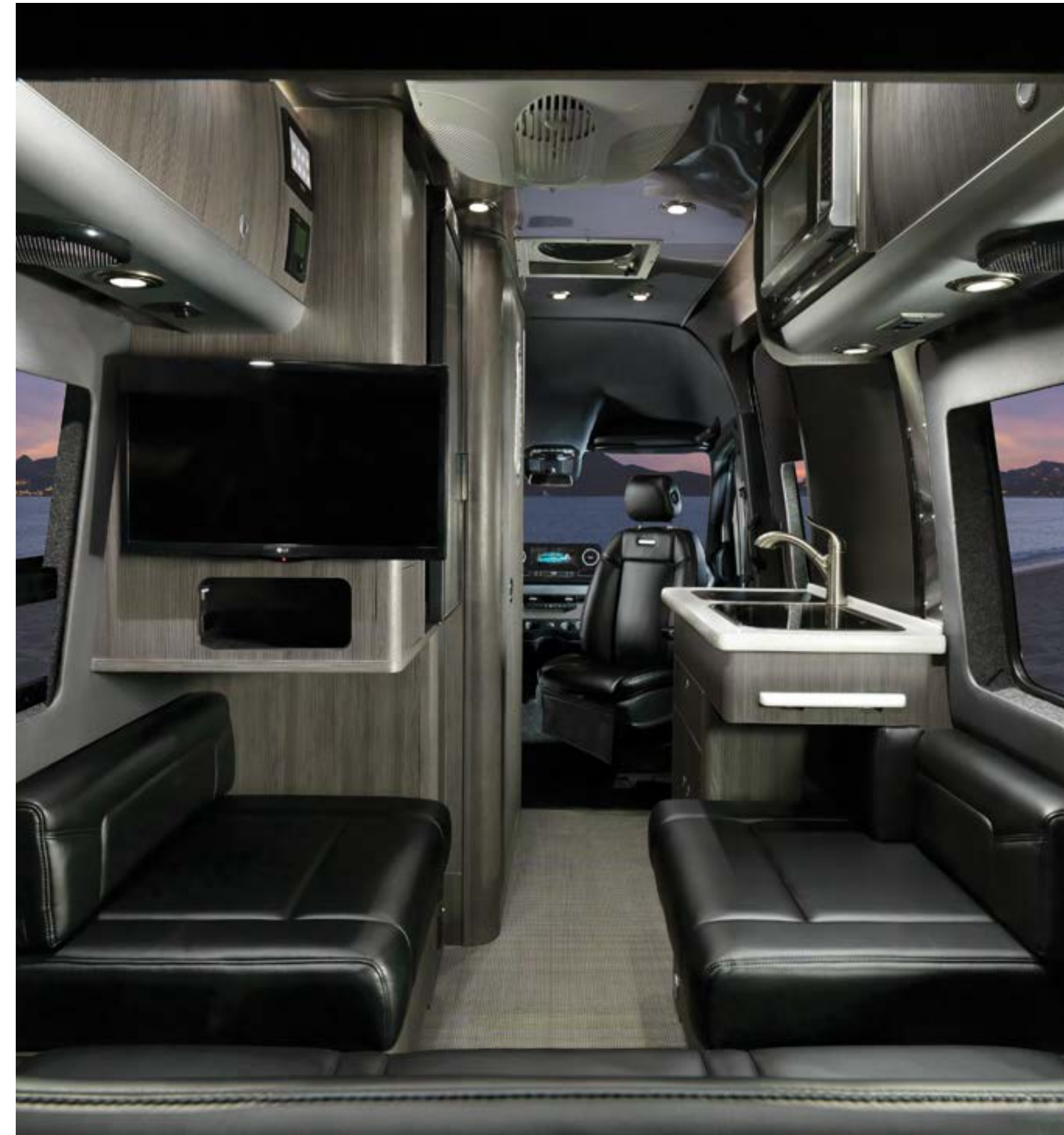
Cockpit with advanced in-dash technology, power seats, and more

# Décors

“It feels so modern, with a bright-airy interior that seems much larger than just 19 feet.”  
**BRUCE** Interstate 19 Owner

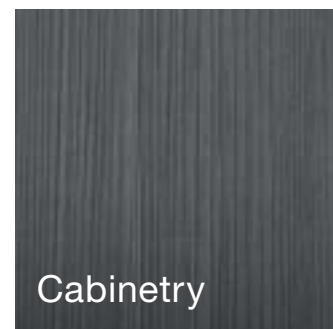
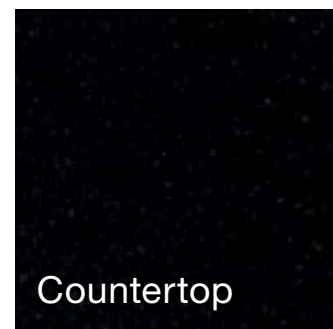
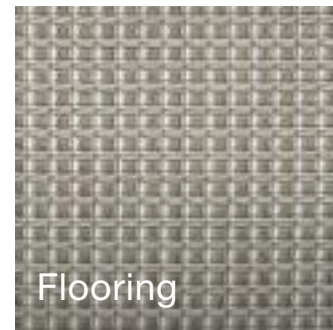
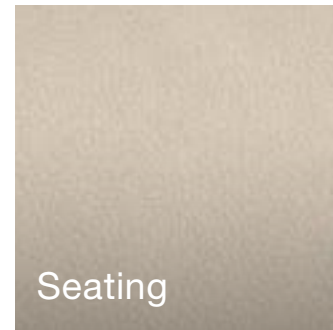


Classic Canyon



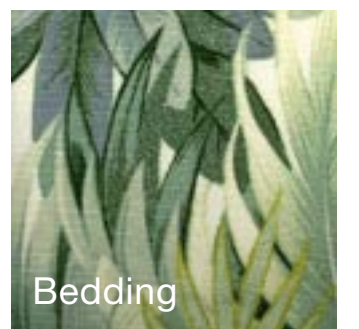
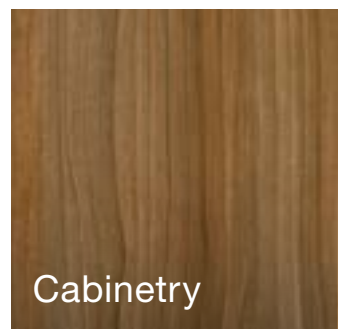
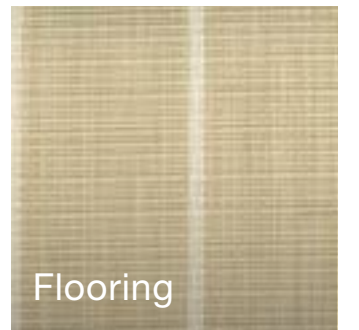
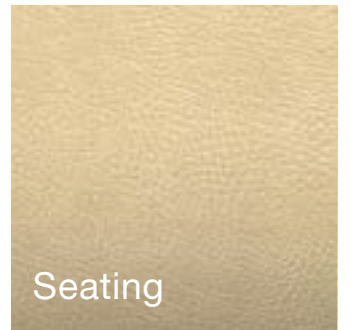
Formal Black

# Décors



Modern Greige

“The woven vinyl flooring is soft under foot and the Ultraleather is comfortable and easy to clean with a wet cloth.” **ROBYN** Interstate 19 Owner



Tommy Bahama Special Edition



## Exterior Colors



Tenorite Grey Metallic  
*(AWD Only)*

Elegant, understated and ready to roam



Iridium Silver Metallic

Exquisite, prestigious, and  
gracefully distinguished



Classic Canyon Décor Shown



## Floor Plan

At just 19 feet, no space is wasted. The powered sofa and side seats convert to a bed with the push of a button, making it easy to slide from an afternoon of reading and catching up on emails to an evening of rest and relaxation. Powered functions extend throughout the interior, with a multiplex control and monitoring system that lets you raise and lower the shades, control interior lighting, and extend the awning from the touchscreen interface.

After a day of hiking or exploring, come back to a spacious, European-style wet bath that neatly houses a sink, shower, and toilet. Every inch of space is designed to get wet, and every function is smart and efficient: The showerhead doubles as the faucet, the mirror extends and swivels, and there's a totally waterproof toilet paper cover.

# Exterior Features

Built on the powerful performance of the legendary Mercedes-Benz Sprinter van chassis, the Interstate 19 is packed with exterior features that prioritize entertaining, camping, and enjoying the outdoors. The sliding door automatically opens, and a powered step extends for easy entrance. Two 100 Ah deep cycle lithium batteries, roof-mounted solar panels, and enhanced power system components ensure you have the power you need for the road ahead.



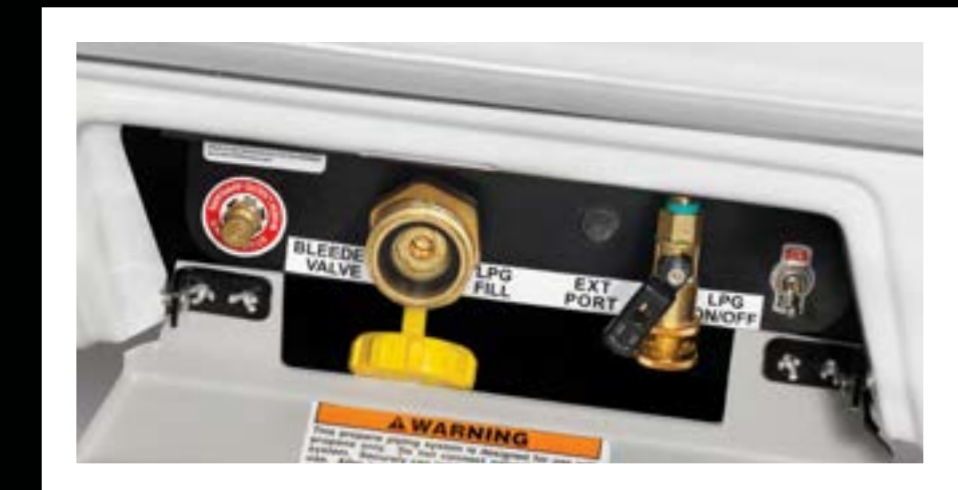
**1** 250 watts of solar panels on the roof harvest the free, abundant power of the sun.



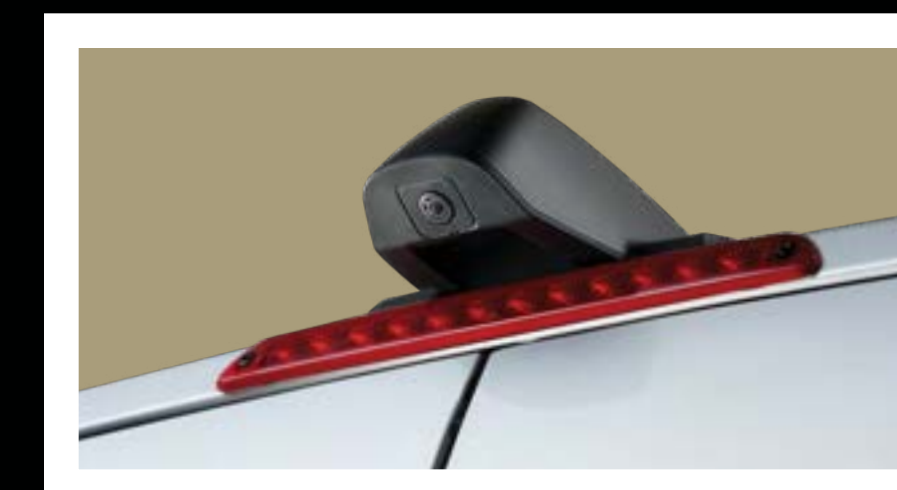
**2** The powered awning extends and retracts at the push of a button.



**3** The optional E1 Package upgrade combines an enhanced energy system with a convenient single-fuel-source heating and hot water system.



**4** Exterior LP gas hookups let you bring along portable gas grills.



**5** Safety sensors positioned around the exterior of the coach give you comprehensive situational awareness.



**6** Mercedes-Benz performance under the hood is anchored by a powerful and efficient diesel engine.

# Chassis Options

## 4X2

Chassis	Mercedes-Benz® Sprinter 2500 Extended
Engine	Mercedes-Benz® 3.0LV6 Turbo Diesel
Horsepower/Torque	188 HP @ 3800RPM/ 325 lbs torque @1400-2400RPM
Transmission	7G-TRONIC Plus Automatic
GVWR/GCWR	9,050 lbs/13,931 lbs
UWV****	7,385 lbs
OCCC****	1,664 lbs
Tow Capacity**	Up to 5,000 lbs
Overall Height	9 ft. 7 in. (inc. A/C & Antenna)

## 4X4

Chassis	Mercedes-Benz® Sprinter 2500 Extended
Engine	Mercedes-Benz® 3.0LV6 Turbo Diesel
Horsepower/Torque	188 HP @ 3800RPM/ 325 lbs torque @1400-2400RPM
Transmission	7G-TRONIC Plus Automatic
GVWR/GCWR	9,050 lbs/13,931 lbs
UWV****	7,579 lbs
OCCC****	1,367 lbs
Tow Capacity**	Up to 5,000 lbs
Overall Height	9 ft. 9 in. (inc. A/C & Antenna)

## AWD

Chassis	Mercedes-Benz® Sprinter 2500 Extended All Wheel Drive
Engine	Mercedes-Benz® 2.0L 4-Cylinder High Output Diesel
Horsepower/Torque	211 HP @ 3,600 RPM 332 lb-ft torque @ 1600 - 2400 RPM
Transmission	9G-TRONIC Plus Automatic
GVWR/GCWR	9,050 lbs/13,931 lbs
UWV****	7,579 lbs
OCCC****	1,367 lbs
Tow Capacity**	Up to 5,000 lbs
Overall Height	9 ft. 9 in. (inc. A/C & Antenna)





# Specifications

Emissions	BlueTEC SCR Technology, 50 State – EPA/CARB Standards
Axle Ratio	3.92 / 4.727 AWD
Wheelbase	144"
MPG*	16-18+ Estimated Highway
Chassis Safety System	Mercedes-Benz® Adaptive ESP® (Electronic Stability Program)
Tow Package	Mercedes-Benz® Hitch, 7 Pin Trailer Plug, Brake Control Pre-wired
Trailer Safety System	Mercedes-Benz® Trailer Stability Assist System
Overall Length	19 ft. 5 in.
Overall Width	6 ft. 7 in.
Interior Height/Width	6 ft. 2 in. / 5 ft. 8 in.
Tank Capacities	18 gals (Fresh), 16 gals (Grey), 9 gals (Waste)
LPG	8.2 gals (34.7 lbs) 80% fill
Diesel Fuel	24.5 gals
Air Conditioner	13,500 BTU
Furnace	14,300 BTU
Water Heater	Truma Combi Eco Plus Hot Water
Heated Tanks	Fresh and Grey Tanks (12 volt)
Refrigerator & Freezer	3.2 cu. ft. Fridge/ .25 cu. ft. Freezer (12 Volt)
Microwave	0.7 cu. ft. Drawer Microwave
Cooktop	2 Burner with Integrated Cover
Safety Components	LP Gas Detector, Smoke and CO <sub>2</sub> Alarm, Fire Extinguisher and First Aid Kit
Plumbing System	Macerator Pump System
TV Antenna	Directional In-motion VHF/UHF
TV Cable	Cable TV Outlets/Hook-ups
TV Satellite	Pre-wired for Satellite Dish
Connected 5G Antenna	Pre-wired for Airstream Connected

Electrical System	Touch Screen/Touch Pad Electronic Controls with Energy Management
Converter/Inverter	50 amp Multi-stage Charger, 1,000 Watt Pure Sine Inverter
Generator	2.5 kW (LPG) with Remote Start
Batteries (Coach)	2 – 100 Ah Deep Cycle Lithium Batteries (LiFePO4)
Shore Power	30 amp/110 Volt Service
Solar Power	250 Watt
E1 Package	OPT
Front Bed System	OPT
Support	3 Year 24/7 Coach-Net® Roadside Assistance
Warranty***	3 Years/36,000 Miles Airstream 3 Years/36,000 Miles Mercedes-Benz® 5 Years/100,000 Miles Mercedes-Benz® Engine
(Chassis specs may vary, contact your Airstream Dealer)	

## Safety

Multiple Safety Air Bags	STD
Active Brake Assist	STD
Active Lane Keeping Assist	STD
Active Distance Assist - Distronic Plus	STD
Active Driver Attention Assist	STD
E-Call Assist	STD
Traffic Sign Assist	STD
Wet Wiper System	STD
360 Degree Camera	STD

## Cockpit

Power Adjustable Heated Driver/Passenger Seats	STD
Tilt & Telescopic Leather Steering Wheel	STD
Advanced Multifunctional Steering Wheel	STD
Push Button Keyless Start	STD

Power Adjustable Heated Driver/Passenger Seats	STD
Tilt & Telescopic Leather Steering Wheel	STD
Advanced Multifunctional Steering Wheel	STD
Push Button Keyless Start	STD
Steering Wheel Paddle Shifters	STD
Entry Door Lighting	STD
In-Dash Wireless Cell Phone Charging	STD
Overhead Map Lights	STD
In-Dash Maintenance Monitoring System	STD
MBUX Infotainment System (Mercedes-Benz User Experience) touch screen, pinch, zoom, voice recognition, Apple Carplay, Android capability	STD
Rear View Camera Monitor	STD
Custom Carpet Floor Mats	STD
Privacy Shades	STD
Rear Cabin Carpet Kit	OPT

## Exterior

Full Body Kit	STD
Hidden Hitch Cover Rear Bumper	STD
Fog Lamps	STD
Mercedes-Benz Aluminum Wheels	STD
High Performance Headlights	STD
Power Heated Mirrors	STD
Power Armless Awning w/Auto Retract	STD
Power Entry Step (sliding side door)	STD
LED Lighting - patio, service box locations, adjustable awning, under carriage	STD
Locking Service Boxes	STD
Exterior Shower with Hot & Cold Water	STD
LP Accessory Hook-up (Grill)	STD
Power Rear Screen	STD
Side Screen Door	STD
Power Sliding Door	STD

# Main Cabin

Signature Aluminum Ceiling & Trim	STD
Matte Finish Laminate Cabinetry	STD
Flush-Mount & Solid Shut Cabinets	STD
Ultraleather™ Seating	STD
Vinyl w/Urethane Covering on Walls & Windows	STD
Power Window Shades	STD
Marine Woven Synthetic Flooring	STD
Adjustable LED Lighting	STD
Adjustable Swivel Table (1)	STD
LED Widescreen SMART HDTV	STD
Power Rear Sofa Converts to Lay Flat Bed	STD
USB Charging Ports	STD
Exhaust Fan with Rain Sensor	STD

# Bathroom (Wet Bath)

Toilet	STD
Shower	STD
Sink with Articulated Mirror	STD
Riveted Aluminum Porthole Door	STD
Retractable Clothes Line	STD
Towel Rack	STD

# Galley

Solid Surface Countertop with Backsplash	STD
Solid Surface Galley Slide-Out Shelf	STD
Sink with Integrated Cover	STD
Cooktop with Cover	STD
Under Counter Lighting	STD

\* Actual mileage may vary due to load, driving style, and overall conditions.  
 \*\* Typical tow capacity will vary and is dependent upon build spec and intended vehicle loading with people, cargo, and fluids.  
 \*\*\* New Vehicle Limited Warranty. Individual components may vary. See Owners Manual for specific warranty coverage and information.  
 \*\*\*\* Weights are approximate. See Vehicle Sticker for specific vehicle information.

# Why You'll Love It

If your idea of adventure strays into urban environments and concrete jungles, Interstate 19 is made for your travel style. At home in the campsite as well as on the curb, Interstate 19 is one of our most versatile motorized camper vans.

Nimble steering and a shorter wheel base make Interstate 19 easy to maneuver through busy streets and crowded parking lots. And it fits into most standard parking spaces.

The smaller footprint means an ultra-efficient interior use of space – but spares none of the features or amenities you want out of your Airstream.

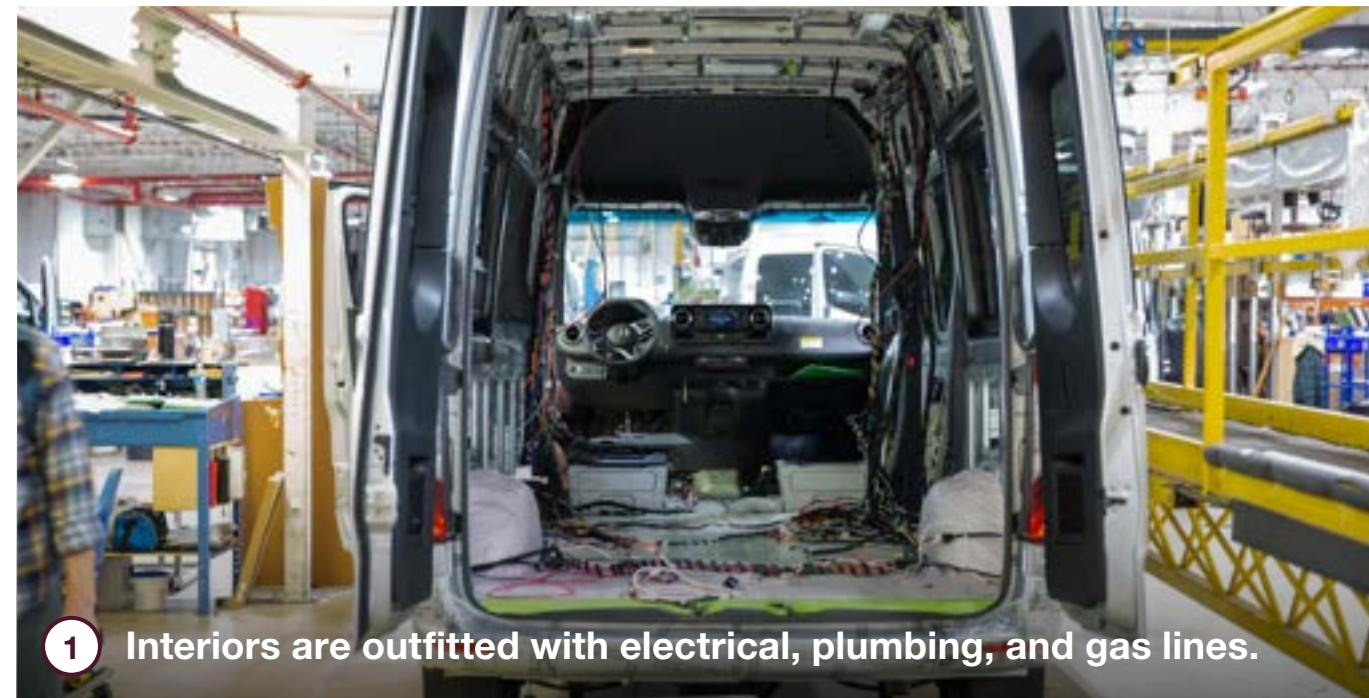
Even while you bring along all the comforts of home, this 19-foot touring coach isn't much bigger than many SUVs and handles like your daily driver. Pick up the kids, head across town to the grocery, or set off on the adventure of a lifetime.



# How It's Made

Each Mercedes-Benz® Sprinter van chassis arrives in Jackson Center, Ohio fully loaded with safety and security features and one of the most powerful and dependable engines under the hood. Our expert craftspeople add external features like RV windows, vents, air conditioners, awnings, and undercarriage features like generators, holding tanks, and batteries. Standard seats are removed and re-upholstered with plush Ultraleather, while the interior is outfitted with electrical wiring harnesses, plumbing, gas lines, and insulation. We hand-craft every cabinet and storage locker in our woodshop, which are then installed alongside showers, beds, tables, and kitchen appliances. Every Airstream touring coach is put through an extensive water check to ensure there are no leaks before quality inspection teams test every component, system, and function before it goes out the door to a customer.

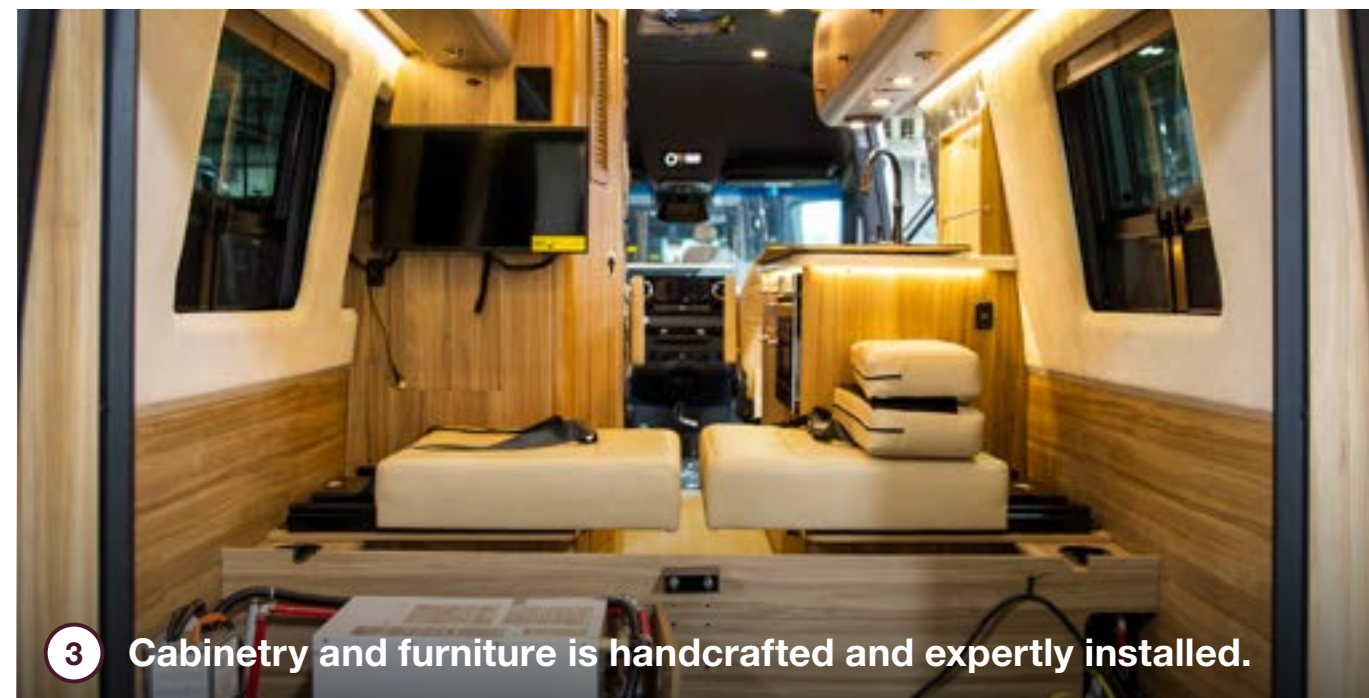
[Schedule a factory tour](#)



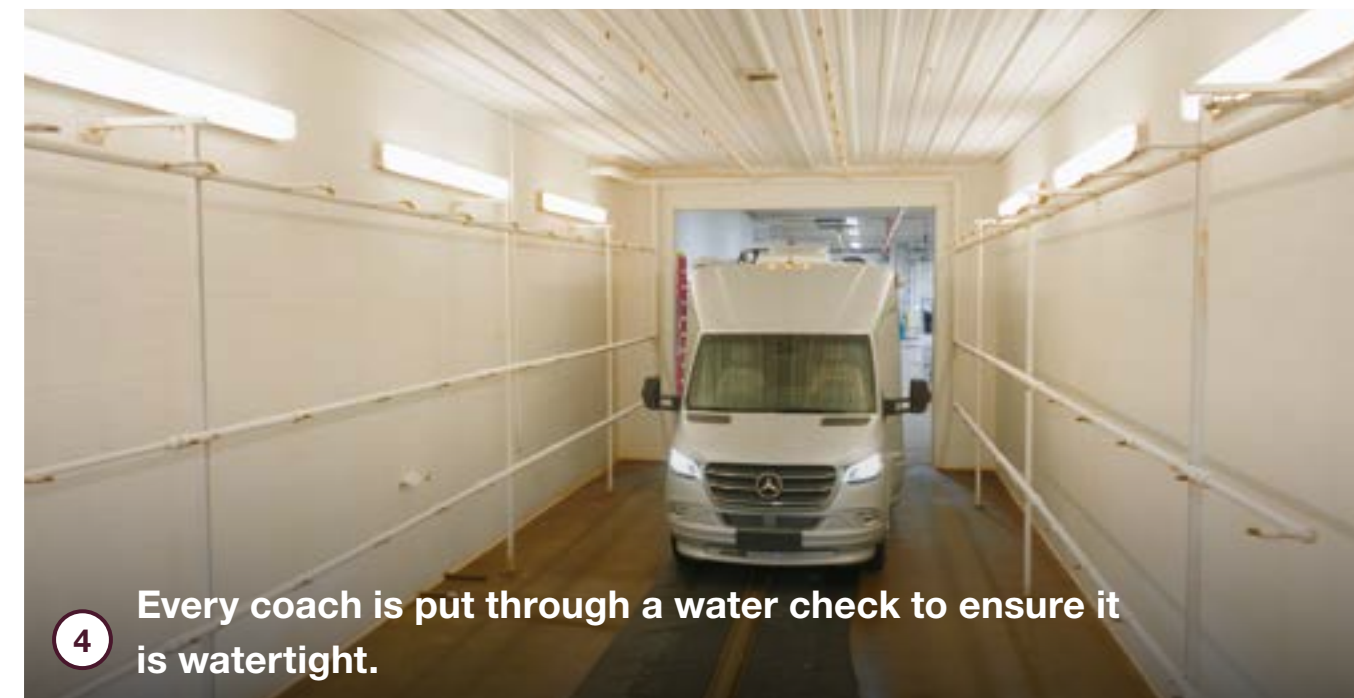
1 Interiors are outfitted with electrical, plumbing, and gas lines.



2 Seating is upholstered in-house with Ultraleather fabric.



3 Cabinetry and furniture is handcrafted and expertly installed.



4 Every coach is put through a water check to ensure it is watertight.



419 West Pike Street,  
P.O. Box 629  
Jackson Center, OH  
45334 USA  
937-596-6111

[www.airstream.com](http://www.airstream.com)

# **AIRSTREAM<sup>®</sup>** + **Mercedes-Benz<sup>®</sup>**

## Roll with the Best<sup>®</sup>

Product information, specifications, and photography in this brochure were as accurate as possible at time of printing. Photographs may contain some features that are optional on your vehicle.

Since we continually strive to improve our products, actual products may differ. Prices and specifications are subject to change without notice. All capacities are approximate and dimensions are nominal. Some features or options may be different or unavailable in other countries.

Warning – This information is intended as a guide only. Weights of individual vehicles may vary. Consult your owner's manual for complete loading, weighing, and towing instructions. Do not overload the travel trailer.

AIRSTREAM<sup>®</sup>, the Airstream travel trailer trade dress, and all related model names, slogans, logos, trade dress, and trademarks are owned or used under license by Airstream, Inc. All other trademarks are owned by their respective owners.