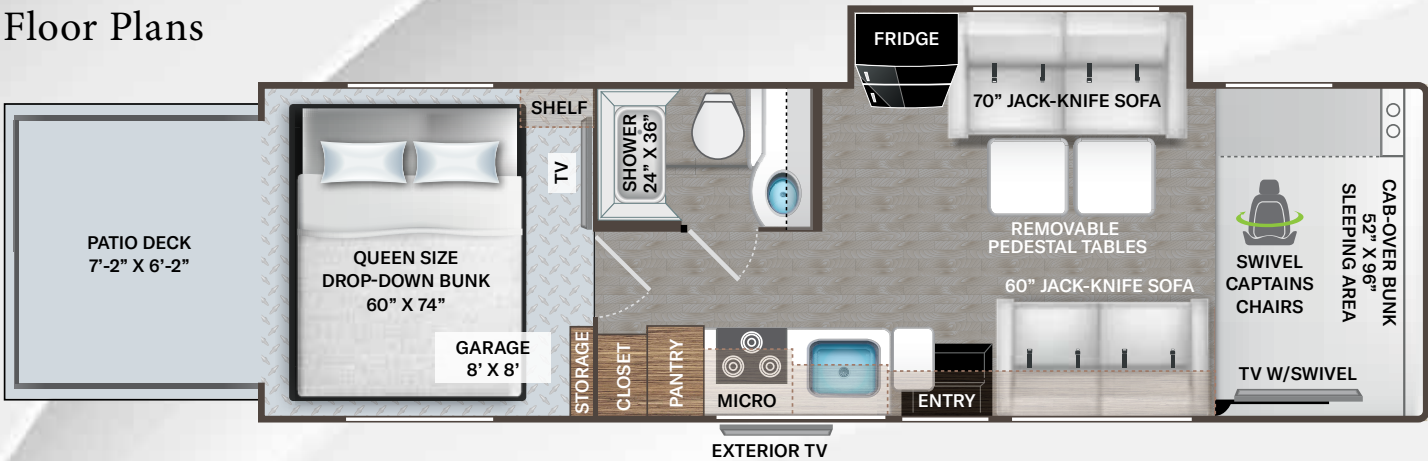
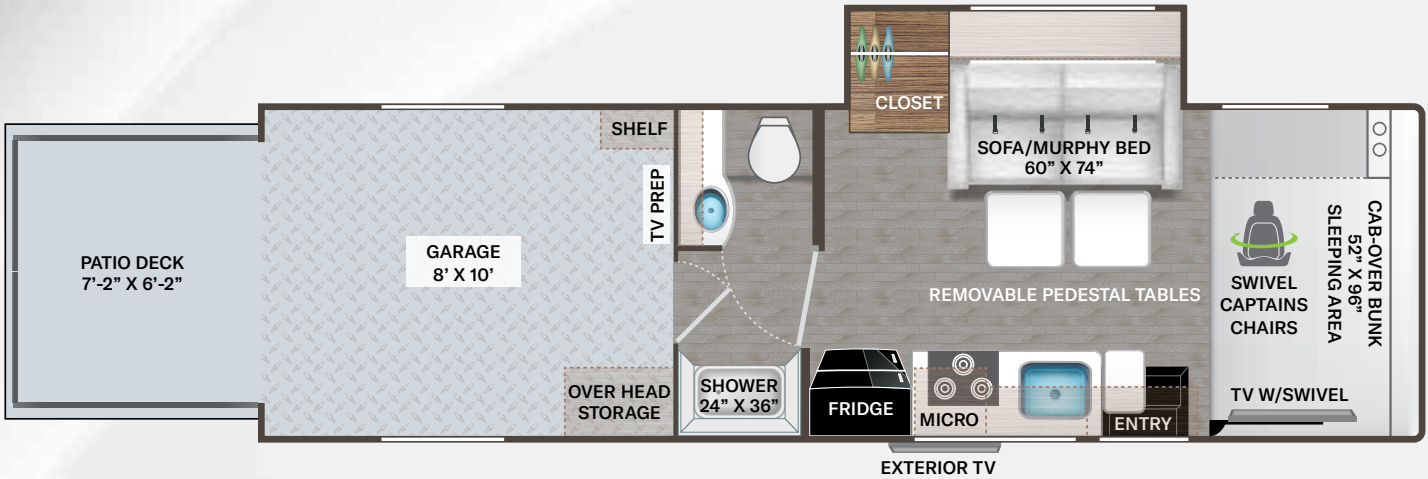


Floor Plans

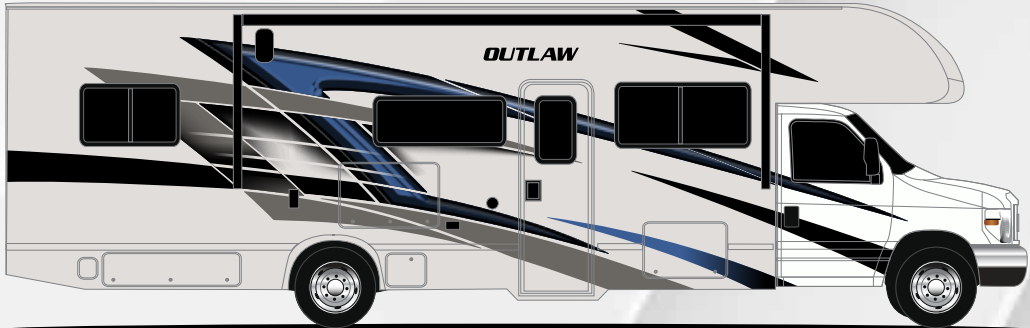
29J



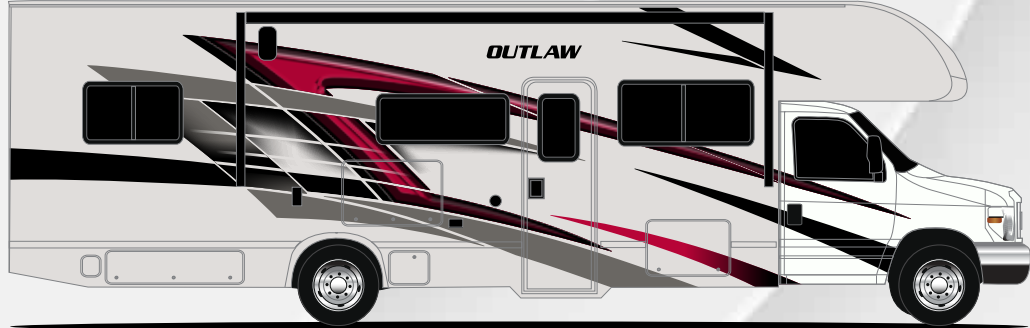
29T



Exteriors



BLUE SPARX



RED RYDER

Interiors

BLACK TALON 2 DECOR

WEATHERED CHERRY

GRAY GHOST DECOR

COASTLINE GREY

CALIFORNIA WHITE



Use your phone's camera to find out more information on the **Class C** Outlaw. Just scan the code!



**OUTLAW**

# Featured Highlights

## CONSTRUCTION & EXTERIOR

- Ford® E-Series Chassis - 7.3L V8 325HP & 450 lb-ft Torque - w/TPM's
- Smooth Tech Ride Enhancement
- Automatic Leveling Jacks with Touchpad Controls
- Premium One-Piece Crossflex Roofing Material
- One Piece Fiberglass Front Cap
- One Piece Upper Rear Cap
- Sterling Fiberglass Exterior with Graphics Package
- Power Patio Awning with Integrated LED Lighting
- Lighted Rotocast Storage Compartments
- Entry Grab Handle
- Under-entry-step Accent Light
- Drop-Down Ramp Door, Patio Deck Railings & Powered Patio Awning
- Spot Lights Over Ramp Door
- Bug Screen Curtain in Garage
- Air Ventilation Sidewall Vents in Garage
- 8,000-lb. Trailer Hitch
- Frameless Windows

## AUTOMOTIVE & COCKPIT

- Ford® E-Series Chassis - 10” Touchscreen Dash Radio, Apple CarPlay™, Android Audio® with Back-Up Monitor
- Touch N' Go Control™ Panel: Tank Levels, Generator AGS, Emergency Start Switch, Slideout Controls, Keyless Entry with Bluetooth®
- Heated/Remote Exterior Mirrors with Side View Cameras
- Cruise Control
- Tilt Steering Wheel
- Steering Wheel Audio and Camera Controls
- Keyless Entry System (Cab Doors)
- Power Windows & Door Locks
- Swivel Leatherette Captain's Chairs
- Molded Automotive Cockpit Headliner
- Valve Stem Extenders
- Stainless Steel Wheel Liners
- Aluminum Running Boards
- Emergency Engine Start

- Windshield Privacy Curtain
- Map Light
- LED Taillights

## INTERIOR

- Residential Vinyl Flooring
- Hard Vinyl Ceiling Material
- LED Lighting
- Entry Grab Handle
- Pressed Laminate Countertops Throughout
- Weathered-Cherry Flat Panel Cabinet Doors with Black Nickel Hardware
- Full Extension Soft Close Metal Ball-bearing Drawer Guides
- Queen-size Powered Drop-Down Bunk in Garage (29J)
- Leatherette Jackknife Sofa and Removable Pedestal Table (29J)
- Leatherette Sofa with Queen Size Murphy Bed Conversion and Removable Pedestal Table (29T)
- Wireless Phone Charger with USB Plug on Countertop Behind Sofa (29J)
- Cab-over Sleeping Area with Cup Holders and Telescoping Bunk Ladder
- Bedspread and Pillow Shams (29T)
- Premium Window Privacy Roller Shades
- 12-volt Attic Fan with Cover in Cab-Over
- Ceiling Vent in Garage
- Tread-plate Non-slip Flooring in Garage w/Tie Down Rings
- Stainless Steel Storage Cabinet in Garage (29J)
- Slated Track System in Garage for Hanging Accessories (29T)

## INTERIOR OPTIONS

- Cali-Collection Two-Tone Flat-panel Cabinet Doors with Black Nickel Hardware
- Cab-over Area Child Safety Net

## KITCHEN

- 12-volt Refrigerator with Auto Generator Start
- Recessed 3-Burner Gas Cooktop with Glass Cover
- Range Hood with Task Light Above Cooktop

- Convection Microwave Oven with Air Fryer
- 12-volt Vent in Kitchen
- Large Single Bowl Stainless Steel Sink with Single Handle Faucet & Pull-Down Sprayer
- Pressed Laminate Countertop
- Flip-Up Countertop Extension
- Stainless Steel Sink Cover
- Kitchen Accent Countertop Lights
- Pantry Cabinet (29J)

## BATHROOM

- Stainless Steel Bathroom Sink
- 12-volt Ceiling Vent
- Robe Hooks
- Foot Flush Toilet
- Skylight in Shower
- Curved Anti-Micobial Shower Curtain

## ENTERTAINMENT

- 39” SMART LED TV in Cab-over on Manual Swivel
- 32” SMART LED TV in Garage (29J)
- Exterior 12-Volt 32” SMART TV on Swivel Bracket with Bluetooth® Built-in Sound Bar and Radio
- Premium Dash Radio Speaker for Living Area
- Bluetooth® Coach Radio System in Garage
- Winegard® ConnecT™ 2.0 WiFi / 4G / TV Antenna
- Power Charging Center for Electronics
- Satellite Mounting Backer in Roof

## ELECTRICAL & PLUMBING

- 4000 kW Gas Generator
- 30-amp Shoreline Power Cord
- Automatic Transfer Switch with Power Protection
- Single, High-Output, Roof Air Conditioner
- 5,000 BTU Air Conditioner with Remote in Garage
- Single Group 31 Auxiliary House Battery
- Battery Tray for Four (4) Batteries
- 1,000-watt Entertainment Inverter
- USB Charging Station in Garage with 12-volt CPAP Power Outlet
- 100-Watt Solar System with Solar Panel and Charging Controller

- Tankless Water Heater
- Black Tank Flush System
- 360° Siphon® Holding Tank Vent Cap
- Holding Tanks with Heat Pads
- Exterior Shower (29J)
- Exterior Water Spray Port (29T)
- Exterior LP Connection



P.O. Box 1486, Elkhart, IN 46515  
Sales Department: 800.860.5658



Use your phone's camera to find out more information on the **Class C** Outlaw. Just scan the code!

# Specifications

SPECIFICATIONS	29J	29T
Chassis	Ford E Series	Ford E Series
Gross Vehicle (GVWR)	14,500	14,500
Gross Combined (GCWR)	22,000	22,000
Wheel Base	219"	213"
Exterior Length (w/o ladder)	31'-2"	31'-2"
Exterior Height (w/AC)	10'-10"	10'-10"
Exterior Width (w/o mirrors)	99"	99"
Interior Height (living area)	84"	84"
Awning Size	16'	17'
Fuel (gal)	55	55
LPG (lbs)	40.9	40.9
Fresh/Waste/Gray Water (gal)	40 / 30 / 34.5	40 / 30 / 34.5
Water Heater (gal)	Tankless	Tankless
Furnace (BTUs)	19,000	19,000
Exterior Storage Capacity (cu. ft.)	17.2	18
Garage Capacity (lbs.)	1,000	1,000
Hitch Rating (lbs.)	8,000	8,000

For a complete listing of specifications and available features, visit: [thormotorcoach.com/outlaw-class-c](https://thormotorcoach.com/outlaw-class-c)

IMPORTANT—PLEASE READ: This brochure reflects product design, fabrication, material, components and specifications at the date of printing, which date is disclosed below. Please visit us online at [ThorMotorCoach.com](https://thormotorcoach.com) or consult with your selling dealership for the latest in standards, options, specification and technical information. Photographs in the brochure may depict optional equipment or may only be available in certain floor plans. Components, appliances and the chassis may have been manufactured in a calendar year before the vehicle's designated model year. All capacities are approximate. The actual length of the vehicle may differ from that indicated in the brochure due to variances in the manufacturing processes and/or installed components. All dry weights are based on standard model features and do not include optional features or equipment. Component part and appliance manufacturers issue limited warranties covering portions of the vehicle not covered under the limited warranty we issue.  
Copyright Thor Motor Coach, Inc. © OH 09/06/2024

