



# CANYON STAR

2026 CLASS A DIESEL MOTORCOACH

## The Industry's Only Class A Front-Engine Diesel Toy Hauler

This revolutionary design combines the superior torque and reliability of diesel power with the spacious cargo capabilities you demand. Whether you're brining motorcycles, ATVs, or your complete adventure gear collection, the Canyon Star's reinforced cargo area and heavy-duty ramp door make loading and securing your toys effortless. The front-engine configuration delivers exceptional weight distribution and road stability, ensuring confident handling even when fully loaded. With best-in-class towing capacity, you'll never have to choose between luxury and capability again. The Canyon Star stands alone in its category—a testament to innovative engineering that refuses to compromise.



# MC Freightliner® Custom Chassis Front-Engine Diesel

Cummins B Diesel Engine | 340 HP | 700 lb./ft. torque | Agawa Full-Paint Masterpiece Finish™ Exterior



39' / 1 floor plan



# COCKPIT

- Six-Way Power Driver and Passenger Seats
- Manual Footrest and Seat Tablet Holder on Passenger Seat
- Optiview Glass Dash Instrument Panel
- Telescoping Steering Wheel
- Xite Dash Radio
  - Apple CarPlay®
  - 9" Dual Monitors
  - Nav-N-Go Navigation System
- Side-View Cameras
- USB and USB-C Charging Outlets
- 180W Harman/JBL Sound System





## CABIN

**Three Décor Options:**  
Capilano, Excelsior, and Sherbrooke

**Samsung® LED TV**  
Bose® Soundbar  
43" LED TV in Front Overhead (Optional)

**Vinyl Plank Flooring**  
Woven Material on Slideout Floors\*

**74" Powered Theater Seating\*\*** (Optional)

\*New for 2026

\*\*Additional configurations available; see Features & Options for details



# CABIN

## Maple Cabinet Doors in Suede Finish

Available in Four Solid Colors and Three Two-Tone Options\*  
New Cove Cabinet Color and Two-Tone Cove/Chiffon Option\*

## Two 15K BTU Heat Pump Air Conditioners\*

One 13.5K BTU Heat Pump Air Conditioner in Garage

## 10.1" Central Monitor and 5" LCD Touch Screen Control Panels

WiFiRanger Everest System with Aspen Router (Optional)

Starlink Internet System (Optional)

\*New for 2026



Floor plan 3947 with Excelsior décor and Cove Maple cabinets.

## CABINET FINISHES





## GALLEY & DINETTE

**30" Stainless Convection Microwave**  
Air Fryer Feature

**Three-Burner Gas Cooktop with Piezo Ignition**  
Two-Burner Induction Cooktop (Optional)

**10 Cu. Ft. Norcold® Refrigerator**  
Additional Refrigerator Configurations Available (Optional)

**Polished Solid-Surface Countertops**  
Undermounted Stainless Steel Single-Bowl Sink

**Dishwasher** (Optional)

**Kitchen Window**

**Williamsburg Dinette Booth Sleeper**  
Drawers for Added Storage





## BEDROOM

**Samsung® LED TV**

**Queen-Size Bed**

**Pillow Top Mattress**

Adjustable Lifts on Bed Top

**Large Lighted Shirt Wardrobe**



## BATHROOM

40" x 30" Fiberglass Shower  
with Shower Door

Skylight Above Shower

Truma AquaGo Continuous  
Flow Water Heater

110V Heat Pads for Holding Tanks

Polished Solid-Surface Countertops

Fold-Down Seat (Optional)





## GARAGE

### 10' Garage

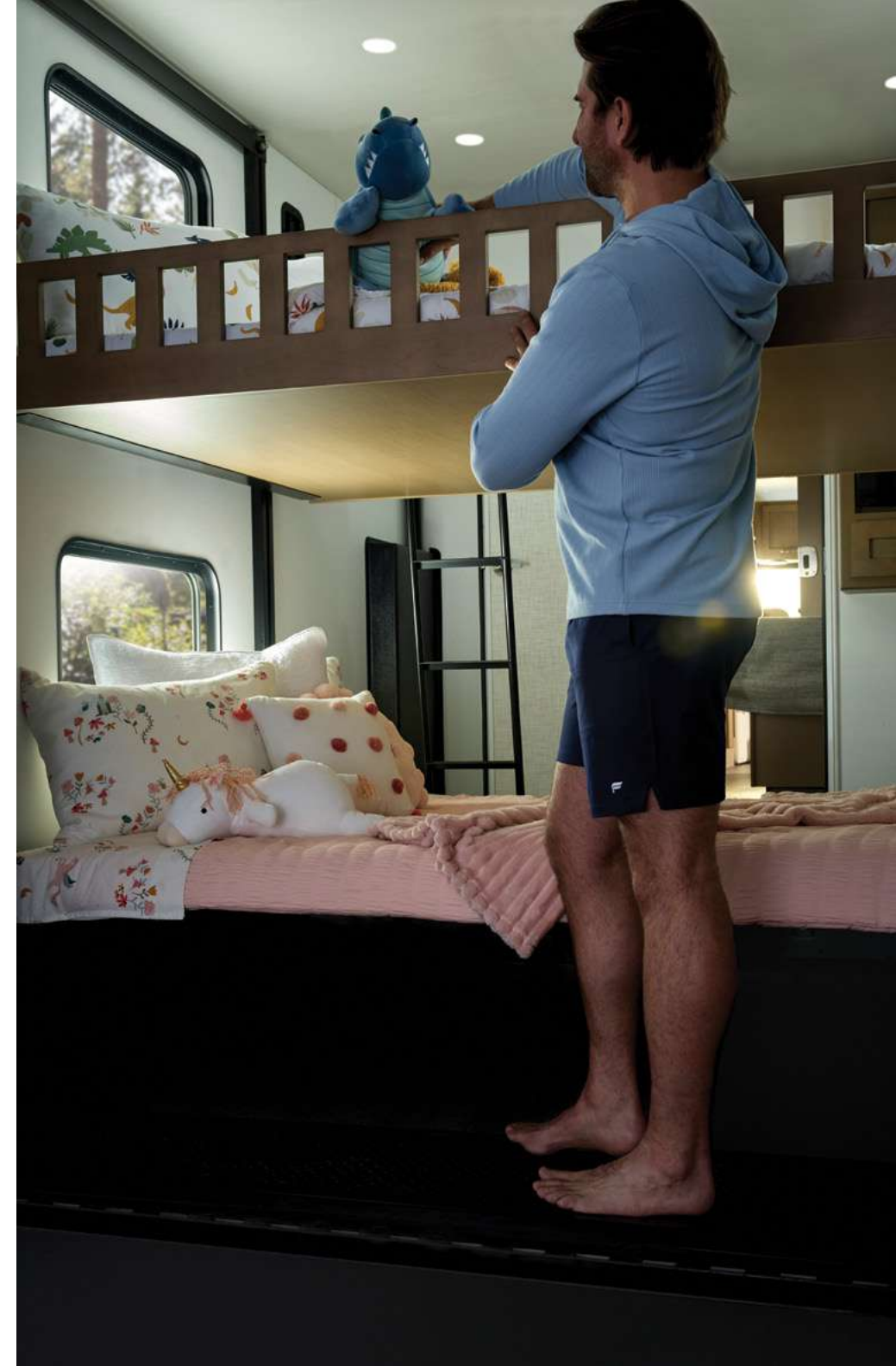
#### Rear Ramp Door with Hump

Powered Opening and Closing Feature (Optional)

#### Power Screen for Rear Garage Door

#### Electric Lift Bunk Beds with Seating, Pedestal Table, and Removable Floor Rug (Optional)

#### Patio Deck Featuring Patio Awning and Lights\* (Optional)



\*New for 2026

## GARAGE

**32" Samsung® LED TV**

**Exterior AM/FM/DVD Radio**

Two Interior and Two Exterior Speakers

**Splendide® Two-Piece Stacked  
Washer and Dryer (Optional)**

**13.5K BTU Heat Pump Air Conditioner**

**Diamond Tread Rubber Flooring**

**Fueling Station**

**Fan-Tastic® Vent with Rain Sensor**





## EXTERIOR & STORAGE

### Industry-Exclusive Full-Paint Masterpiece Finish™

Three New Exterior Graphics: Agawa, Ausable and Havasu\*

### Exterior Entertainment Center (Optional)

32" Samsung® LED TV  
Bose® Soundbar

### SilverStar Ultra Headlight Bulbs

### Armless Apex Dual Storage Awning with Strip Lighting

\*New for 2026



# EXTERIOR

8 kW Cummins Onan® Generator

10W Solar Panel (To Charge Chassis Battery)

Rear Hitch for Towing Car

Smart Level Hydraulic Leveling Jacks  
with Bluetooth Compatible Touchpad



# DESIGN OPTIONS

---

INTERIOR AND EXTERIOR

# AGAWA



Charcoal Tweed Awning



**CAPILANO INTERIOR**



Furniture



Fabric



Fabric



Flooring



Counter Top

AUSABLE



Charoal Tweed Awning



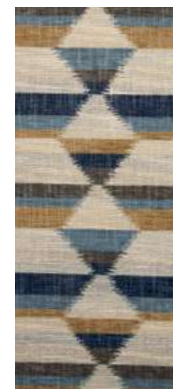
**EXCELSIOR INTERIOR**



Furniture



Fabric



Fabric



Flooring



Counter Top

# HAVASU



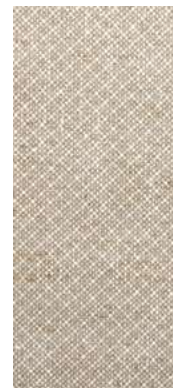
Charcoal Tweed Awning



**SHERBROOKE INTERIOR**



Furniture



Fabric



Fabric



Flooring



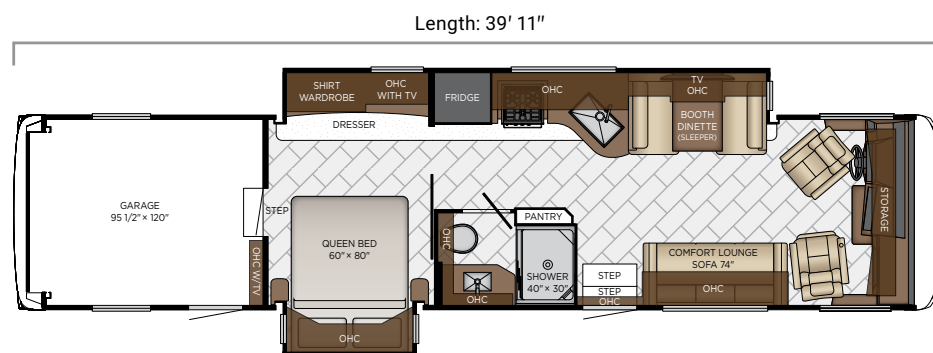
Counter Top

*\*Exterior colors and interior décor options can be matched to customer preference.*

# FLOOR PLANS

---

AND SPECIFICATIONS



3947

Length	39' 11"
Width	101.5"
App. Overall Height	12' 11"
Interior Width	95.5"
Interior Height	84"

Grey Tank	60 gal.
Sewage Tank	40 gal.
Water Tank	75 gal.
Furnace	35,000 btu



# Quality You Can Feel

Like a fine home, the 2026 Canyon Star is framed 16 inches on center, and is covered by a fiberglass roof with an integrated gutter rail.

FREIGHTLINER® CUSTOM CHASSIS											
FLOOR PLAN	ENGINE HP	AXLE RATIO	FUEL CAP.	WHEEL BASE	FRONT GAWR	REAR GAWR	TAG GAWR	GVWR	GCWR	APP. UVW	APP. NCC
3947	340	5.13	80	274	12000 lb.	20000 lb.	-	32000 lb.	33000 lb.	25950 lb.	6050 lb.

The content in our literature depicts and describes products that are subject to change. For the most recent images and information, please visit [NewmarCorp.com](https://www.newmarcorp.com).

Lengths, heights, widths, and dry weights are approximate. Weight will vary based on optional equipment added to the above base weight.

**GAWR:** Gross Axle Weight Rating is the maximum permissible weight for an axle.

**GVWR:** Gross Vehicle Weight Rating is the maximum permissible weight for a fully loaded motor coach.

**GCWR:** Gross Combination Weight Rating is the value specified by the manufacturer of the vehicle as the maximum allowable loaded weight of this motor coach and any towed trailer or towed vehicle.

**UVW:** Unloaded Vehicle Weight is the weight of this motor coach as built at the factory with full fuel, engine oil, and coolants. Does not include cargo, fresh water, propane gas, or dealer-installed accessories.

**NCC:** Net Carrying Capacity is the maximum weight of all occupants, including the driver, personal belongings, food, fresh water, waste water, propane gas, tools, tongue weight of towed vehicle, dealer-installed accessories, etc., that can be carried by the motor coach.

**Specifications supplied by the chassis manufacturer.**

**Canyon Star R-Values:**

Roof R-Value = 19

Sidewall R-Value = 11

Floor R-Value = 16

Basement R-Value = 4

# FEATURES

---

AND OPTIONS

**EXTERIOR FEATURES**

Exterior Full-Paint Masterpiece Finish™ with Clearcoat
Chrome Baggage Door Locks
Entrance Door Assist Handle
Entrance Door Automatic Step
Entrance Door with Automatic Triple Step in Garage Area
Convex Chrome Exterior Mirrors with Defrost and Remote Control
Front Cap Diamond Shield Protection
Fueling Station for Garage Area
10' Rear Ramp Garage Access Designed for ATV and Normal Clearance Motorcycle (Floor Plan 3947)
Smart Level Hydraulic Leveling Jacks with Bluetooth Compatible Touchpad
Mud Flaps
Rear Hitch for Towing Car
Stainless Steel Exterior Trim Pieces on Front Cap and Grill Area
Tow Guard Rear Protective with Stainless Newmar Letters
Undercoating

**OPTIONS**

Agawa Full Painted Exterior Graphics
Ausable Full Painted Exterior Graphics
Havasu Full Painted Exterior Graphics
Flag Pole Bracket
Rear Ramp Garage Door Without Hump, Functions as a Deck with Patio Awning and Lights
Rear Ramp Garage Power Door on Floor Plan 3947 - Not Available with Rear Ladder (M100)
Rear Ladder - Not Available on Floor Plan 3947 with Power Rear Ramp Door (T028)
Windshield Temporary Protection - For Transport Only

**CONSTRUCTION FEATURES**

16" On-Center Aluminum Frame Sidewalls and Roof Construction
Gelcoated Fiberglass Exterior Sidewalls, Front and Rear Caps
One-Piece Molded Fiberglass Roof
Polar Pak R19 Batten Insulation In Roof
Slideout Automatic Mechanical Lock Arms - Scissor Style

**WINDOWS, AWNINGS, & VENTS**

Armless Apex Dual Stage Awning with Strip Lighting
Fan-Tastic® Vent with Rain Sensor In Kitchen, Bathroom and Garage Area
Power Screen for Rear Garage Cargo Door
Skylight Above Shower
Slideout Covers
Frameless Double-Pane Tinted Safety-Glass Windows
One-Piece Tinted Windshield

**OPTIONS**

Power Window for Driver
-------------------------

**CHASSIS FEATURES**

Anti-Lock Braking System
Cruise Control
Dash Panel Optiview - Freightliner®
Glass Dash Instrument Panel
MC Freightliner® Custom Chassis, 340HP Front Engine Diesel, 274" Wheel Base
Tilt Steering Wheel
Aluminum Wheels

**OPTIONS**

MC Freightliner® Custom Chassis, 340HP Front Engine Diesel, 274" Wheel Base, California Compliance
--

**AIR CONDITIONING & HEATING**

Two 15K BTU Air Heat Pump Conditioners in Main House Area, One 13.5K BTU Heat Pump Air Conditioner In Garage
Dash Heater and Air Conditioner
Defrost Fans Built Into Front Overhead
Driver and Passenger Dash Overhead Ventilation System
Propane Gas Furnace with Ducted Heat

**ELECTRICAL FEATURES**

Accent Lights In Slideout Fascia Trim
Automatic Generator Start on Low Battery or Temperature Setting
Battery Disconnect Switch for House Battery
Cable TV Connection
Dash Radio, Cameras and Monitors to Power Up From Both House Batteries and Ignition
Daytime Running Lights
Drain Lift Pump (Floor Plan Specific)
50 Amp Electrical Service with Flexible Cord and Automatic Transfer Switch
Emergency Engine Start Switch
Energy Management System
Fog Lights
Six 6V House Batteries
Interior Courtesy Lights
2000W Tru Sine Inverter with CPAP Prep
LED Light on Awning
LED Lights in Ceiling
Lights in Exterior Storage Compartments, Controlled By an Interior Master Switch
Lights in Wardrobes
Multiplex Lighting Control System
10.1" Multiplex Monitor System in Center of Coach with Interior Lighting and HVAC Controls
Newmar App
8.0 kW Cummins Onan® Diesel Quiet Series Generator

12V Recept Auxiliary on Dashboard
Slideout Switch Manually Operated Hold To Run
10W Solar Panel to Charge Chassis Battery
Transfer Switch with Surge Protector
USB Outlet at Dash for Driver Use
USB Outlet at Passenger Seat Area
<b>OPTIONS</b>
Four 120W Flexible Solar Panels on Roof
Solar Prep With 6 Gauge Wire Ran From Roof to First Storage Compartment

## PLUMBING & BATH FEATURES

Exterior Shower Located on Off-Door Side
Sewage Holding Tank Rinse
Fiberglass Surround Shower with Shower Door
Dometic® 321 China Bowl on Most Floor Plans
Water Filter for Entire Unit
Water Heater Bypass System
Truma AquaGo® Instant Continuous Flow Water Heater
<b>OPTIONS</b>
Fold-Down Shower Seat

## INTERIOR FEATURES

Auto Motion Manual Double Roller Shades on Windows (Not On Garage Windows)
Auto Motion Power Shade At Windshield and Manual Shades at Driver and Passenger Side Windows
Fitted Non-Quilted Bedspread and Accent Pillow
Color-Coordinated ABS Dash Panel
Decorative Wall Art
Interior Passage Inlayed Six Panel Design Doors
Diamond Tread Rubber Garage Floor
Interior Assist Handle at Main Entry Door
Padded Vinyl Ceiling Panels
Shoe Storage Located in Entrance Door Step Compartment
Hardwood Slideout Fascia
Tie Down Track in Garage Floor
Vinyl Plank Floor in Kitchen, Bathroom, Bedroom and Living Areas
Wastebasket in Kitchen Base Under Sink
Integrated Window Blind System On Entry Door
Woven Material On Slideout Floors
<b>OPTIONS</b>
383 Sherbrooke Interior Decor
393 Capilano Interior Decor
403 Excelsior Interior Decor
Two Wheel Chocks For Garage Area

## CABINETS & FURNITURE

Concealed Cabinet Door Hinges
Extended Rotation Concealed Cabinet Door Hinges for Washer and Dryer
Soft-Close Cabinet Drawers
Cabinet Drawers with Full Extension Ball Bearing Guides
Flush Cooktop Cover, Matching Countertop Material
Super Polished Solid-Surface Countertop in Bathroom And Bedroom
Super Polished Solid-Surface Countertop in Kitchen, Undermounted Sink and Sink Covers
Williamsburg Sleeper Booth Dinette
Drawers Underneath Dinette Booth Seats
Driver and Passenger Seats with Six-Way Power
Lifts on Bed Top
Plush Pillow Top Mattress
Molded Silverware Divider Tray Pullout Pantry Shelves (See Floor Plans for Availability)
Passenger Seat Tablet Holder
Passenger Seat with Manual Foot Rest
Williamsburg Sofa and Front Seats
Dusk Maple Cabinets with Suede Finish
<b>OPTIONS</b>
Electric Lift Bunk Beds With Seating, Pedestal Table and Removable Floor Rug In 10' Garage
Chiffon Maple Cabinets with Suede Finish
Cove Glazed Maple Cabinets with Suede Finish
Mesa Maple Cabinets with Suede Finish
Two-Tone Chiffon and Cove Glazed Maple Cabinets with Suede Finish
Two-Tone Chiffon and Dusk Maple Cabinets with Suede Finish
Two-Tone Chiffon and Mesa Maple Cabinets with Suede Finish
Euro Booth Dinette ILO Standard
Chestnut Glazed Maple Hardwood Cabinets with Suede Finish
Sable Maple Hardwood Cabinets with Suede Finish
Sedona Maple Hardwood Cabinets with Suede Finish
Summit Maple Hardwood Cabinets with Suede Finish
Two-Tone Summit and Chestnut Glazed Maple Hardwood Cabinets with Suede Finish
Two-Tone Summit and Sable Maple Hardwood Cabinets with Suede Finish
Two-Tone Summit and Sedona Maple Hardwood Cabinets with Suede Finish
Air R5 Square Corner Mattress
74" Theater Seating (Powered) with Reading Lights ILO Standard Sofa

## APPLIANCES & ACCESSORIES

110V Heat Pads For Holding Tanks
30" Stainless Steel Microwave Convection With Air Fryer Feature with Three-Burner Cooktop with Piezzo Ignition
10 Cu. Ft. Norcold® Refrigerator
<b>OPTIONS</b>

Central Vacuum With Tool Kit
Two-Burner Induction Cooktop ILO Standard Cooktop
Dishwasher Under Cooktop
11 Cu. Ft. Whirlpool® Refrigerator
11 Cu. Ft. Whirlpool® Refrigerator with Ice Maker
Washer and Dryer Prep In Garage with Extra Grey Tank
Stacked Two-Piece Splendide® Washer and Dryer in Garage with Extra Grey Tank

## AUDIO, VIDEO & ACCESSORIES

Side View Cameras Displayed Onto Rear View Monitor Screen
Dash Radio with 180W Harman/JBL Sound System
AM/FM/DVD Exterior Radio with Two Speakers Inside Garage Area and Two Speakers Outside
10 BC Fire Extinguisher in Garage
10 BC Fire Extinguisher, Carbon Monoxide, Smoke Detectors
High Definition Component Wiring
Bluetooth Microphone For Dash Radio
Rear View Color Monitor System With Audio
Satellite Dish Prep on Roof
Bose® Sound System Soundbar
TV Jack and 110V Recept in Door-Side Exterior Storage Compartment

32" Samsung® LED TV in Garage Area
Samsung® LED TV In Living and Bedroom Areas (TV Sizes Vary Per Floor Plan)
Winegard® Digital Crank-Up TV Antenna
Xite Dash Radio with Apple CarPlay®, 9" Dual Monitors with Nav-N-Go Navigation System
<b>OPTIONS</b>
Exterior Entertainment Center in Storage Compartment with 43" Samsung® 4K LED TV and Bose® Soundbar
SiriusXM® Radio Capability with Antenna (Does Not Include Monthly Subscription)
Starlink Internet System
43" Samsung® LED TV In Front Overhead
Denali/Spruce WiFiRanger LTE
WiFi System Everest with Aspen Interior Router
Winegard® Automatic Dome Satellite Dish - For DISH® Standard/HD, DIRECTV® Standard and Bell Canada (Rts-20B)
Winegard® Automatic Open Face Satellite Dish - For DISH® HD and Bell HD TV (SK2-100) with Auto Stow
Winegard® Automatic Open Face SWM Satellite Dish - For DIRECTV® Standard/HD (SK2-300) with Auto Stow
Winegard® In Motion Dome Satellite Dish - For DISH® Standard/HD, DIRECTV® Standard and Bell Canada (Rtl-20B)
Winegard® Rayzar Automatic Digital TV Antenna

# THE NEWMAR CUSTOMER EXPERIENCE

The Newmar Difference™ goes beyond our industry-leading motor coaches to provide you with an unrivaled ownership experience.



## Crafted with Purpose

Every Newmar is crafted one at a time by folks who have spent an average of eight years building them. Each coach we assemble must undergo more than 1,000 tests and checks before ever leaving our factory.



## The Highest Standards

We view our dealership network in terms of quality, not quantity. Each of our dealers acts as a partner in our shared mission to exceed your highest of expectations, for an ownership experience that's second to none from day one.



## Built Around You

As a Newmar owner, you'll find resources specific to your coach through Newgle, an easy-to-use knowledge base that houses everything from user guides to technical support documents.



## More than a Number

Meet fellow owners through the Newmar Kountry Klub, a top social club for RV travelers that hosts rallies and other special events throughout the U.S. and Canada.



## Seamless Service

When you join the Newmar family, we pair you with a dedicated service specialist with expert knowledge of your exact coach. Our service specialists guarantee dealer warranty authorizations within four business hours and ship all in-stock parts the same day, free of charge.



## Without Compromise

All models include a one-year/unlimited mileage limited warranty and a five-year, non-transferable structural warranty that covers your coach's superstructure in the event it fails to perform. Ask your Newmar dealer for more details.

# OUR PARTNERS

The Newmar Difference™ begins with suppliers dedicated to providing our customers with unrivaled quality, comfort, and support.



We create chemistry

## BASF

The Coatings division of BASF is a global expert in the development and production of innovative and sustainable OEM and refinish coatings. Coatings by BASF—solutions beyond your imagination.



Driven By You

## Freightliner® Custom Chassis

Freightliner® Custom Chassis are renowned for their exceptional ride, excellent maneuverability, advanced technology, and nationwide 24/7 factory-direct support.



## Industrial Finishes

Industrial Finishes has supported RV manufacturers for over four decades, offering paint products that deliver uncompromising quality and provide your coach with a true Masterpiece™ finish.



## RiverPark

From Samsung® 4K TVs and Xite Infotainment systems to Bose® soundbars and JBL and Infinity premium audio systems, RiverPark helps you experience a higher level of technology in your Newmar coach.



RV CHASSIS

## Spartan® RV Chassis

An American company with over 30 years of experience in designing and manufacturing the premier motorhome chassis, Spartan® delivers superior performance, exceptional safety ratings, and industry-leading technology.



WHEN YOU KNOW THE DIFFERENCE<sup>SM</sup>