



AIRSTREAM[®] Interstate 19X

2027 TOURING COACHES

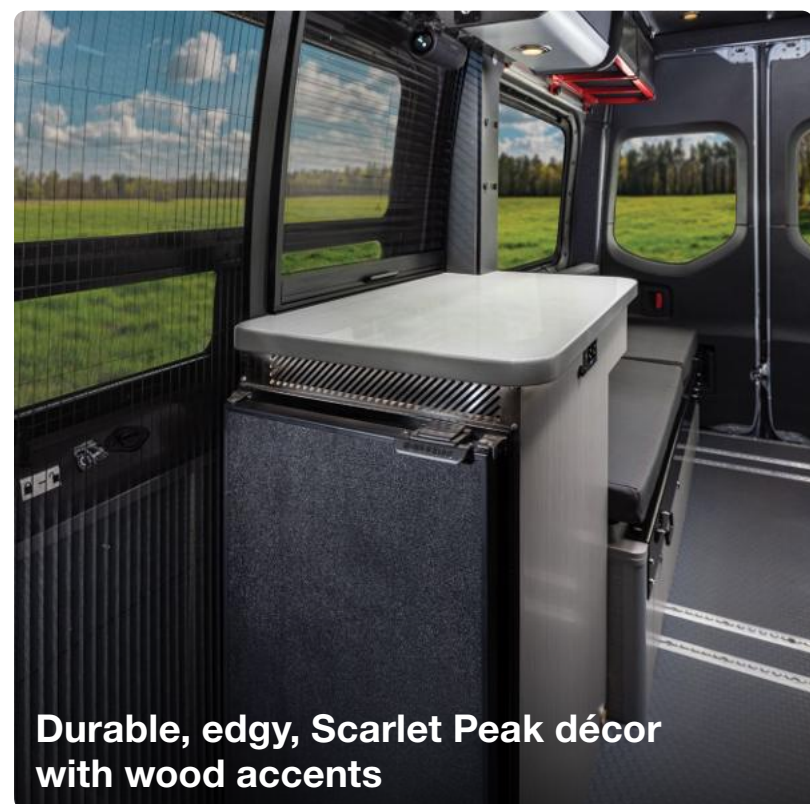


About Interstate 19X

Built on the 19-foot Mercedes-Benz® Sprinter van chassis and equipped with standard all-wheel drive, the Interstate 19X is designed for outdoor and off-road enthusiasts who want to explore farther while enjoying the comforts of home. With iconic Airstream design, premium craftsmanship, and a rugged stance, the 19X delivers extreme comfort, advanced amenities, and best-in-class safety and performance.

Compact yet highly capable, this Class B adventure van is equally at home on highways, dirt roads, or in the heart of a national park. From daily driving to boondocking off-grid, the 19X offers the versatility to handle it all—thanks to a smart floor plan, flexible storage, and a maneuverable footprint that fits nearly anywhere.

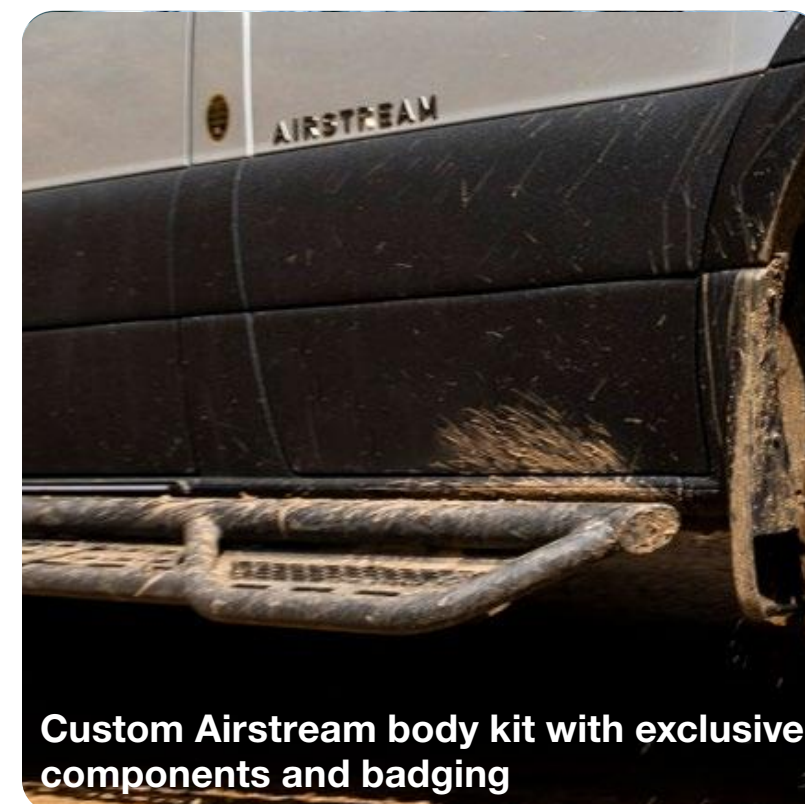
Powering your journey is the all-new, standard Advanced Power Package, engineered for off-grid performance. With enhanced lithium battery capacity, solar integration, and powerful energy management, it lets you stay off the grid longer—without giving up the comforts that make travel truly enjoyable.



Durable, edgy, Scarlet Peak décor with wood accents



Rugged styling with a protective coating around the front, hood, rear and sides



Custom Airstream body kit with exclusive components and badging

Interior Décor



Scarlet Peak



Granite Ridge

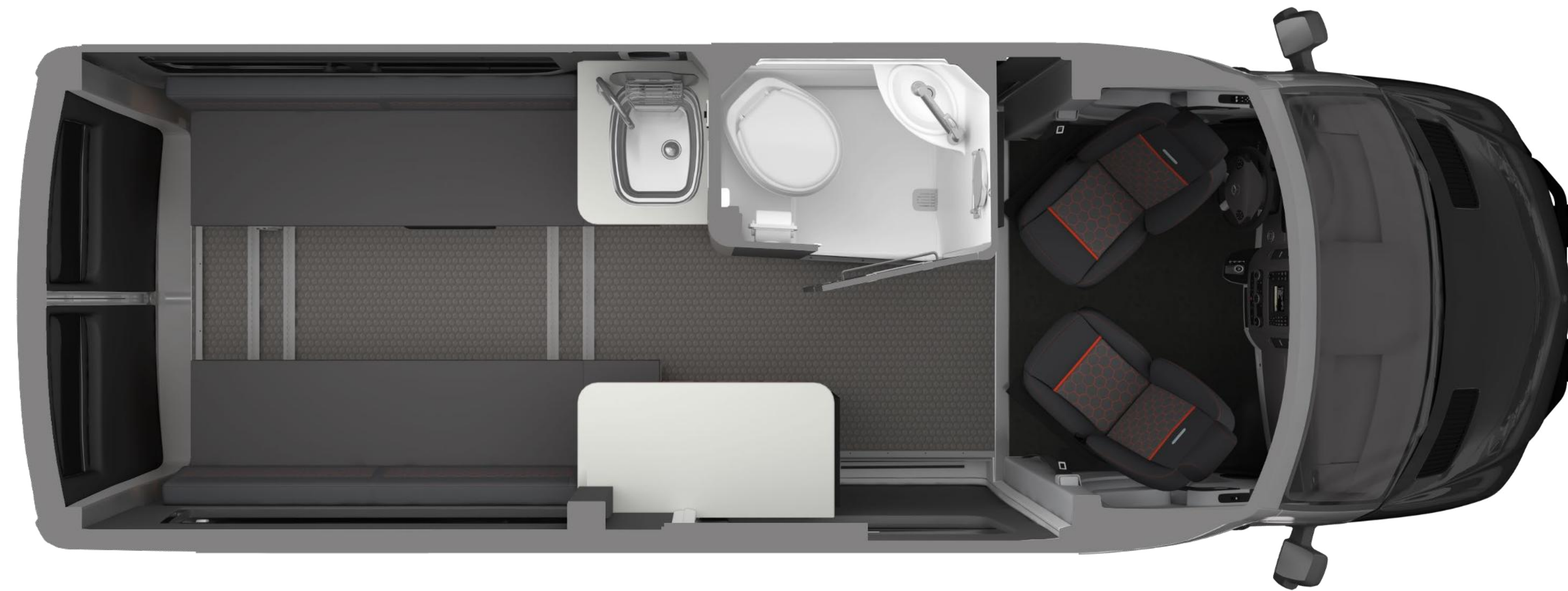
Exterior **Paint Options**



Hightech Silver Metallic



Tenorite Gray Metallic



Floor Plan

After a day of outdoor adventures, return to the comfort and luxury of the Interstate 19X so you can rest and recharge for whatever adventures come tomorrow. Enjoy a complete wet bath with shower, a fully equipped galley with plenty of prep space, and a spacious convertible sleeping/living/dining area that can be set in multiple configurations to suit your needs. The lithium battery power and upgraded inverter provide the needed energy for off-grid adventures that maintain the comforts of home. Even far from shore power hookups, the Interstate 19X can run the air conditioner for ultimate comfort and relaxation.

Exterior Features

The Interstate 19X comes standard with AWD capability, enabling adventurers to get closer to nature, tackle challenging terrain, and ensure peace of mind even in the most remote locations. The exterior is not only ruggedly stylish but also built to withstand the rigors of heading off pavement. The protective coating on the lower body and front hood protects against road debris and scratches, while a Tenzing brush guard with integrated lights offers even more style while traveling off-road.



1 Matte black running boards allow for easy entrance.



2 All Wheel Drive power train combined with Fox 2.5 Performance Elite Series shocks allow you to travel boldly.



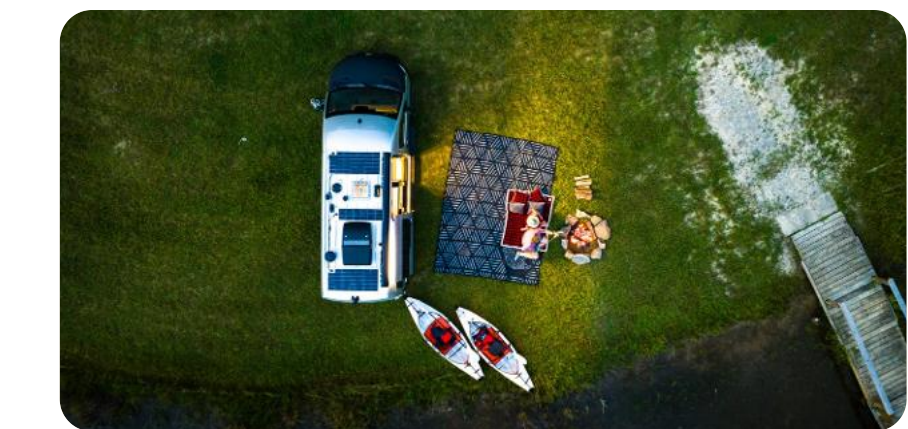
3 Tenzing Brush guard with integrated LED lights provide rugged protection and illumination



4 Black wheels with All-Terrain tires are equipped to get you there safely and in style.



5 Powered armless patio awning extends with push-button ease.



6 240 Watts of solar keep your systems recharging and topped off.

Specifications

Chassis	Mercedes-Benz® Sprinter 2500 AWD
Engine	Mercedes-Benz® 2.0L Turbo Charged 4-Cylinder High Output Diesel
Emissions	BlueTEC SCR Technology, 50 State – EPA/CARB Standards
Horsepower/Torque	208 HP @ 3,600 RPM 332 lb-ft torque @ 1400 - 2400 RPM
Transmission	9G-TRONIC Plus Automatic
GVWR/GCWR	9,050 lbs / 13,930 lbs
UVW****	7,595 lbs
OCCC****	1,455 lbs
Tow Capacity**	Up to 5,000 lbs
Axle Ratio	3.92
Wheelbase	144"
Alternator	280A
MPG*	16-18+ Estimated Highway
Chassis Safety System	Mercedes-Benz® Adaptive ESP® (Electronic Stability Program)
Tow Package	Hitch, 7 Pin Trailer Plug, Brake Control Pre-Wire
Trailer Safety System	Mercedes-Benz® Trailer Stability Assist System
Overall Length	20' 1"
Overall Height	9' 9" (Including A/C)
Overall Width	7' 8.5" (with Mirrors), 6' 7.5"
Interior Height/Width	6' 2" / 5' 10"
Seats/Sleeps	4/2
Tank Capacities	20 gals (Fresh), 16 gals (Grey), 9 gals (Waste)
Diesel Fuel	24.5 gals
Air Conditioner	13,500 BTU with Soft Start
Furnace	Diesel Fired Tuma Combi
Water Heater	Diesel Fired Tuma Combi
Heated Tanks	Fresh and Grey Tanks (12V)
Refrigerator & Freezer	3.2 cu ft with Stainless Insert, (12 V)
Microwave	0.7 cu ft Locker Microwave
Cooktop	1,000 W Single Burner Induction (Stowable)
Safety Components	Smoke and CO ₂ Alarm, Fire Extinguisher and First Aid Kit
Plumbing System	Macerator Pump System with Power Hose Reel
TV Antenna	Omni-Directional, VHF/UHF/FM
TV Cable/Satellite Port Ethernet	Cable TV Outlets/Hook-ups External Ethernet Port

5G Pre-Wire	Pre-wired for Connected Service
Electrical System	Multiplex Bluetooth App Control System with Touch Screen for Energy Management System
Converter/Inverter	130 A Multi-Stage Charger, 3,000 W Pure Sine Inverter Advanced Power: Deep Cycle Lithium Batteries with Built In Heater - 10.3 kWh
Advanced Power	Advanced Power Plus (Dealer Installed Option): Deep Cycle Lithium Batteries with Built In Heater - 17.2 kWh <i>See Your Local Dealer About This Upgrade Option</i>
Shore Power	30 A Service with Smart Plug
Solar Power	240 W System and External Solar Ports
Support	1 Year 24/7 Coach-Net® Roadside Assistance
Warranty***	2 Year Airstream Limited Warranty (Chassis specs may vary, contact your Airstream Dealer) 5 Years/75,000 Miles Mercedes-Benz® Chassis 5 Years/100,000 Miles Mercedes-Benz® Engine & Drive Train

Exterior

Durable Black Protective Coating (Front Hood, Bumpers, and Lower Side Moldings)	STD
Custom Grille	STD
Fog Lamps	STD
Black Aluminum Wheels	STD
Fox 2.5" PES Shocks and Struts	STD
High Performance LED Headlights	STD
Heated Windshield	STD
Power Heated Mirrors	STD
Black Power Armless Patio Awning with LED Lighting	STD
Black Running Boards (Driver/Passenger Side)	STD
LED Lighting - Patio, Service Box Locations, Adjustable Awning and Under Carraige	STD
Tenzing Front Brush Guard with HD LED Lights	STD
Locking Service Boxes	STD
Exterior Shower with Hot and Cold Water	STD
Exterior Zippered Screen System (rear)	STD
Side Screen Door	STD
110 V Outlet	STD
Curb and Street Side Exterior Ports for Additional Solar Panels	STD
Exterior TV and Internet Inlets (Coax and Ethernet Cat6)	STD

Safety

Multiple Safety Air Bags	STD
Active Brake Assist	STD
Active Lane Keeping Assist	STD
Active Blind Spot Assist	STD
Active Distance Assist - Distronic Plus	STD
Active Driver Attention Assist	STD
Active Rear Cross Traffic Assist	STD
Front and Rear Parktronic Parking Assist	STD
Hill Start Assist	STD
E-Call Assist	STD
Traffic Sign Assist	STD
Wet Wiper System	STD
360 Degree Camera	STD
Blind Spot Monitoring	STD

Cockpit

Power Adjustable Heated Driver/Passenger Seats	STD
Tilt and Telescopic Leather Steering Wheel	STD
Advanced Multifunctional Steering Wheel with Capacitive Touch Controls	STD
Heated Steering Wheel	STD
Steering Wheel Paddle Shifters	STD
Push Button Keyless Start	STD
Entry Door Lighting	STD
Overhead Map Lights	STD
In-Dash Maintenance Monitoring System	STD
MBUX Infotainment System (Mercedes-Benz User Experience) Touch Screen, Pinch, Zoom, Voice Recognition, Apple Carplay, Android Capability	STD
In-Dash Wireless Cell Phone Charging	STD
Rear and Side View Camera Monitor	STD
Cockpit Carpet All-Weather Floor Mats (Black)	STD
Privacy Shades	STD
Overhead Cab Shelf	STD

Main Cabin

Signature Aluminum Ceiling and Trim	STD
Matte Finish Laminate Cabinets	STD
Flush-Mount and Solid Shut Cabinets	STD
Colorado Black UltraLeather with Mountain Inset (Front Seats), Simtex Marine-Grade Carbon Gray (Rear Seating/Sleeping)	STD
Night Shades	STD
Rugged Grey Flooring (Waterproof, Stain and Scratch Resistant)	STD
Adjustable LED Lighting	STD
Lagun Modular Table System (2 Mounting Positions)	STD
Pre-Wired for TV Mount	STD
JBL® Wireless Speaker with Locking Mount	STD
Flex Bed System with Comfort Support System (converts to 70" x 74" total or a 35" x 74" Individual Sleeping Area)	STD
USB Charging Ports	STD
Exhaust Fan with Rain Sensor	STD
Underbed Interior Storage	STD
Overhead Storage Compartment/Solutions	STD
Aluminum Aircraft L-Track Storage System Ceiling/Floor	STD
Flex Storage Solutions (Hang, Secure, Tie-Down, Cinch Gear)	STD

Bathroom (Wet Bath)

Toilet	STD
One-Piece Shower	STD
Sink with Articulated Mirror	STD
Retractable Clothes Line	STD
Towel Rack	STD
Riveted Aluminum Porthole Door	STD

Galley

Solid Surface Countertop with Backsplash	STD
Sink with Cover	STD
Induction cooktop	STD
Under Counter Lighting	STD

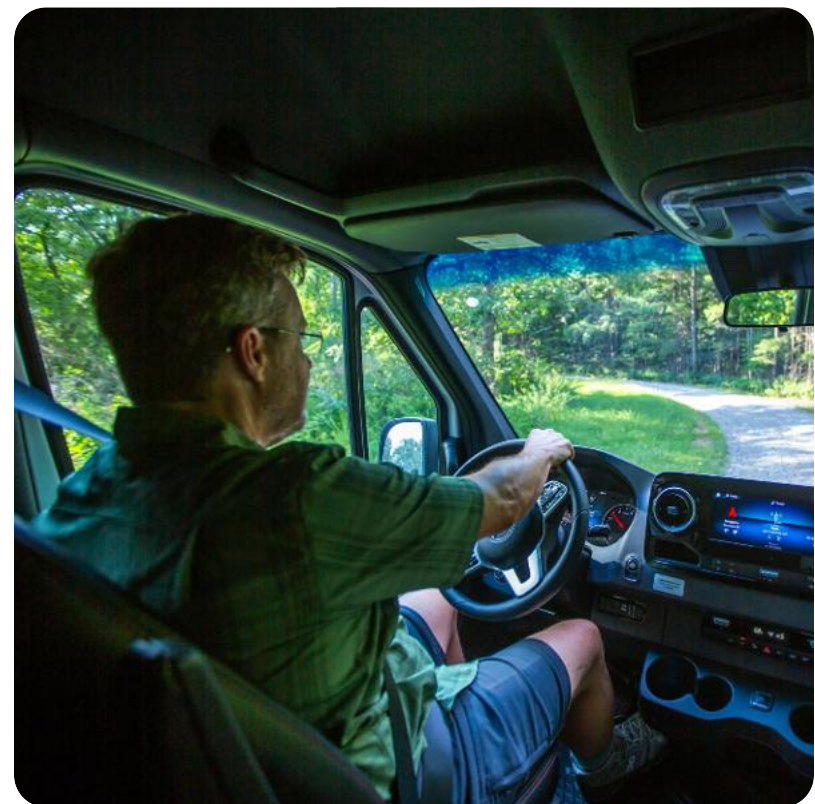
* Actual mileage may vary due to load, driving style, and overall conditions.
 ** Typical tow capacity will vary and is dependent upon build spec and intended vehicle loading with people, cargo, and fluids.
 *** New Vehicle Limited Warranty. Individual components may vary. See Owners Manual for specific warranty coverage and information.
 **** Weights are approximate. See Vehicle Sticker for specific vehicle information.

Why You'll Love It

With clever storage throughout, Interstate 19X has plenty of room to bring along travel necessities and all the gear your adventure requires. The spacious rear area offers room for paddleboards, bikes, or other large gear, with an L-track storage system on the floors, walls, and ceiling to securely stow your gear.

Hit the road to big adventures in a small-footprint design that maximizes use of space.

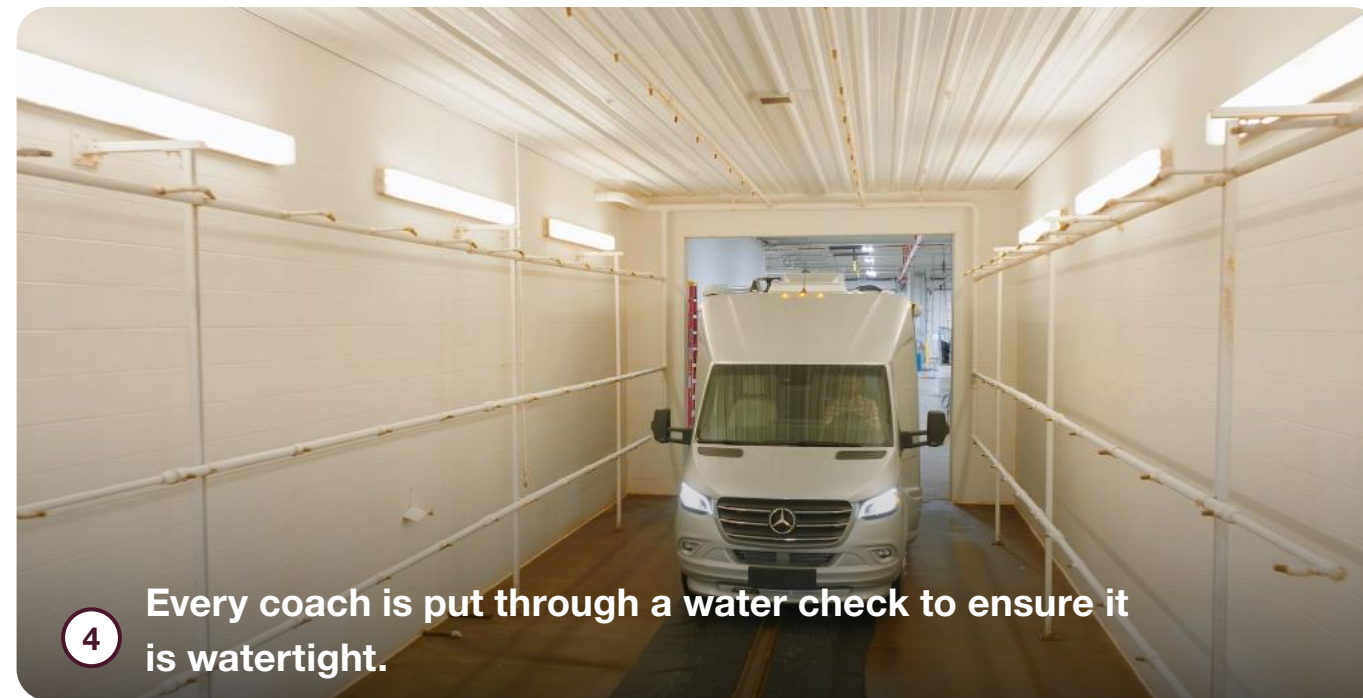
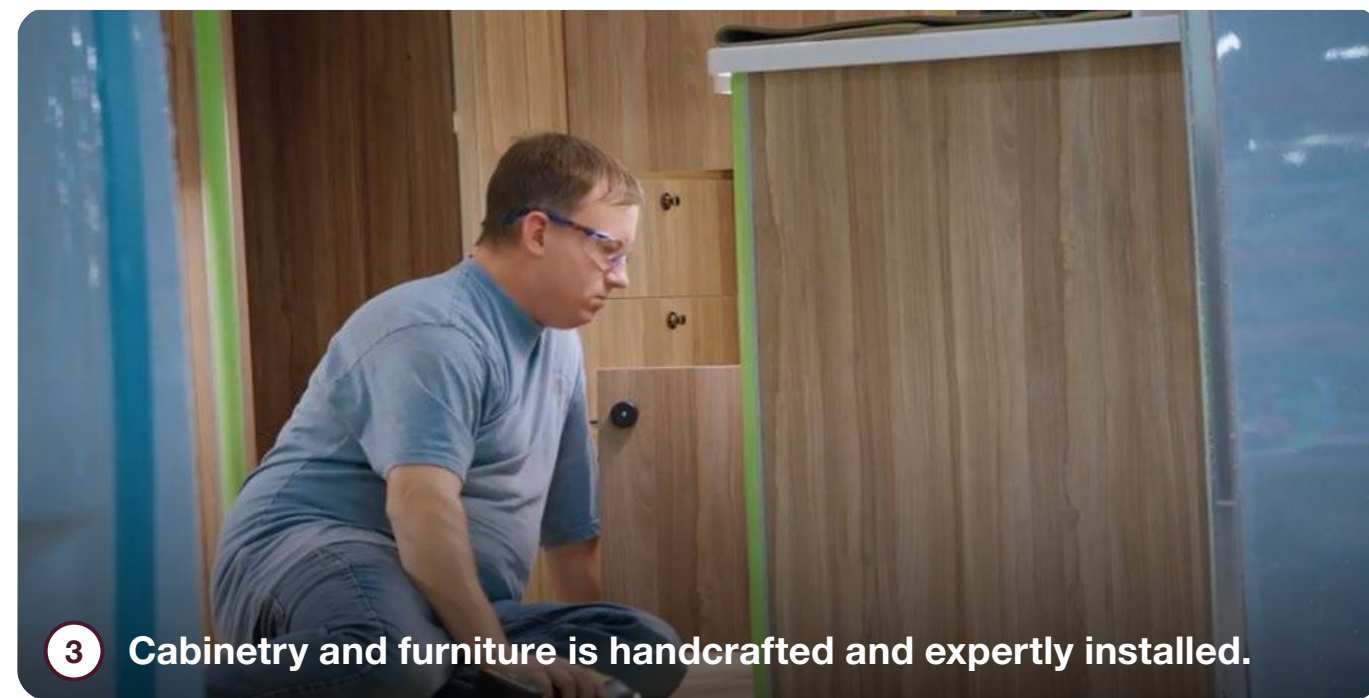
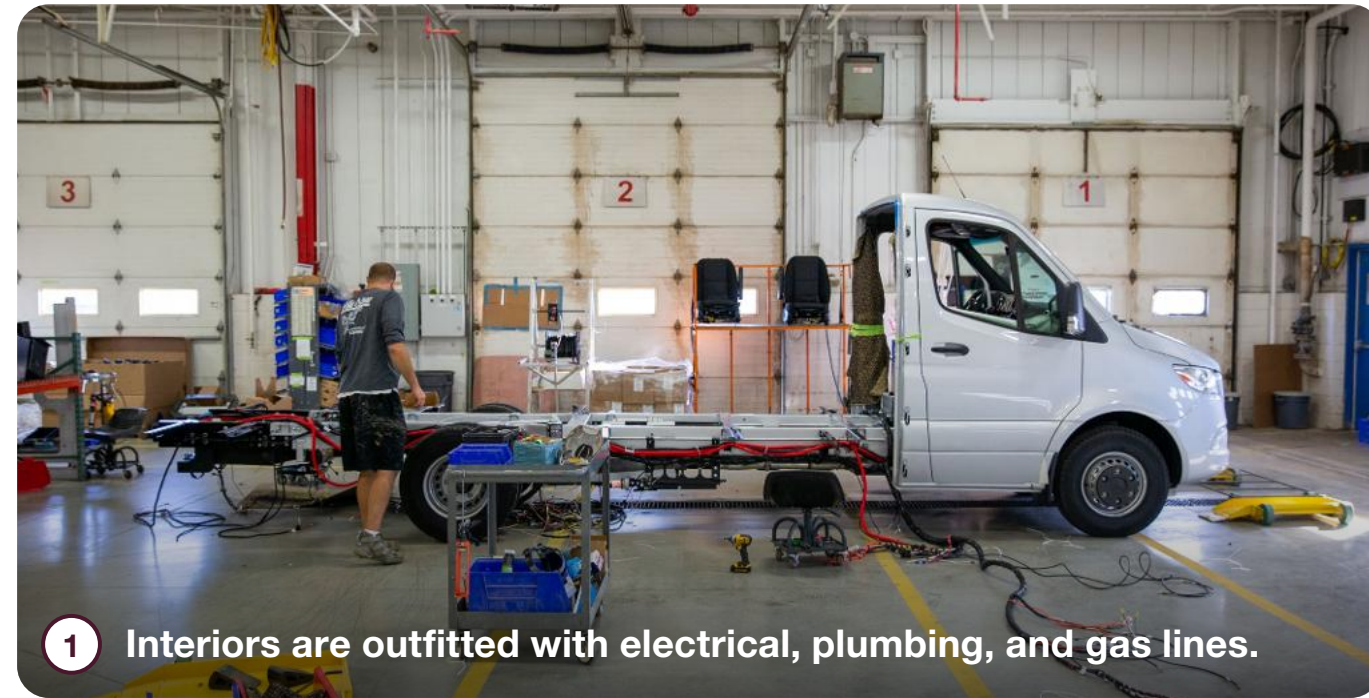
And with the Advanced Power System you have even more off-grid capability, with larger batteries and a single-fuel-source heating and hot water system that draws fuel from the vehicle's tank.



How It's Made

Each Mercedes-Benz cab chassis arrives in Jackson Center fully loaded with safety and security features and one of the most powerful and dependable engines under the hood. Our expert craftspeople hand-build the exterior walls and roof in-house while undercarriage features like generators, holding tanks, and batteries are installed. Standard seats are removed and re-upholstered with plush Ultraleather, while the interior is outfitted with electrical wiring harnesses, plumbing, gas lines, and comfort systems. We handcraft every cabinet and storage locker in our woodshop, which are then installed along with the shower, seating, and galley appliances. Extensive paint and fiberglass bodywork complete the exterior. And like every Airstream product, Atlas is put through an extensive water check to ensure there are no leaks before quality inspection teams test every component, system, and function before it goes out the door to a customer.

[Schedule a factory tour](#)





419 West Pike Street,
P.O. Box 629
Jackson Center, OH
45334 USA
937-596-6111

www.airstream.com

AIRSTREAM[®] **+** **Mercedes-Benz[®]**

Roll with the Best[®]

Product information, specifications, and photography in this brochure were as accurate as possible at time of printing. Photographs may contain some features that are optional on your vehicle.

Since we continually strive to improve our products, actual products may differ. Prices and specifications are subject to change without notice. All capacities are approximate and dimensions are nominal. Some features or options may be different or unavailable in other countries.

WARNING – The recreational vehicle weight must remain within the manufacturer's specified chassis weight limit. Do not overload the recreational vehicle through the addition of water, options, cargo or otherwise. Your safety depends on not overloading the trailer, axles, and tires.

AIRSTREAM[®], the Airstream travel trailer trade dress, and all related model names, slogans, logos, trade dress, and trademarks are owned or used under license by Airstream, Inc. All other trademarks are owned by their respective owners.