



AIRSTREAM® Interstate 24GTX

2027 TOURING COACHES

Discover Interstate 24GTX



Hightech Silver Metallic

Tenorite Gray Metallic

Luxury Meets Rugged Capability

The Interstate 24GTX takes the luxury and comfort of the 24GT and adds rugged capability for those who crave adventure. With Mercedes-Benz® power and performance under the hood, it's built to take you farther, whether you're heading out for a weekend escape or a cross-country journey. The 24GTX pairs Airstream's handcrafted interior with bold, adventure-ready exterior upgrades, delivering a perfect balance of premium comfort, confidence, and off-grid freedom for travelers who refuse to compromise.

24GTX Features:

All-Wheel Drive & Electronic Stability Control: Mercedes-Benz systems provide added stability and confidence in all road conditions.

Tenzing Brush Guard with Integrated LED Lights: Rugged front-end protection with adjustable LED lights to blaze your path forward.

Durable Body Protection Coating: Protective coating on front and rear bumpers, sides, and hood for lasting durability.

Black Aluminum Wheels: Stylish and strong, paired with rugged, all-terrain tires for on and off-road performance.

Black Running Boards: Easy entry and exit with durable, sleek black running boards.

Exterior Features

Built on the powerful Mercedes-Benz Sprinter chassis, the Interstate 24GTX is crafted for travelers who seek both luxury and adventure. Rugged and ready for off-pavement exploration, it combines a bold, durable exterior with refined interiors for ultimate comfort. Premium suspension ensures a smooth ride, while the Advanced Power System, roof-mounted solar panels, powered awning, and safety sensors provide energy, convenience, and peace of mind for journeys without compromise.



1 400 watts of solar panels on the roof harvest the free, abundant power of the sun.



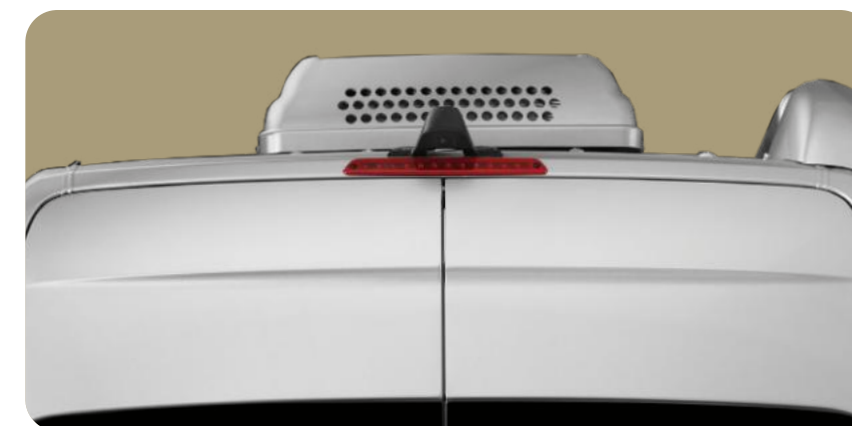
2 The powered awning extends and retracts at the push of a button.



3 The standard Advanced Power Package combines a powerful battery system with a convenient single-fuel-source heating and hot water system.



4 Air Ride Suspension handles bumps in the road, changes in elevation, and wind resistance for the smoothest ride possible.



5 Safety sensors positioned around the exterior of the coach and a rear view camera give you comprehensive situational awareness.



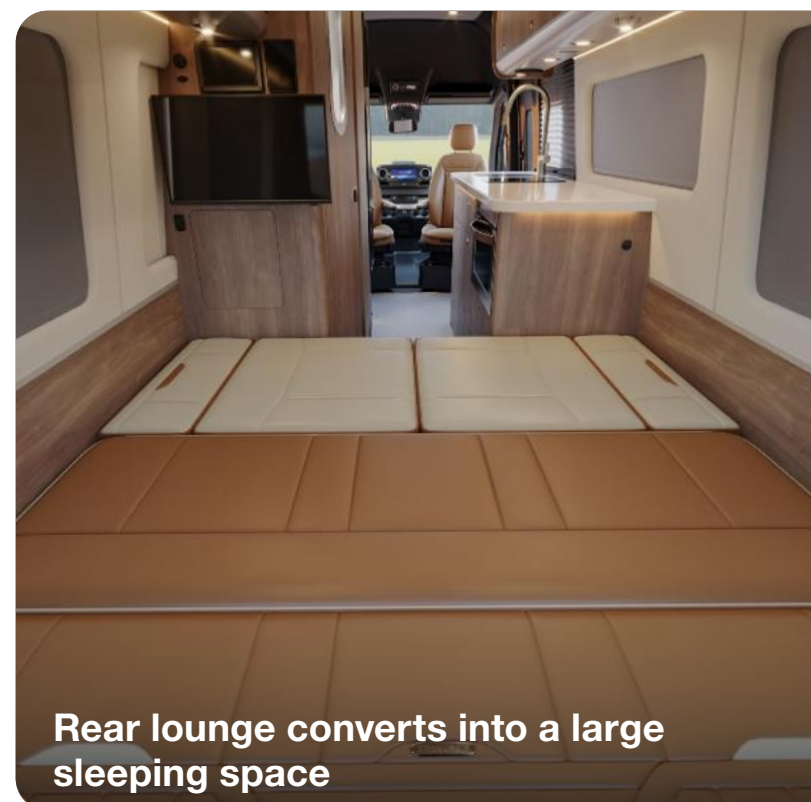
6 Mercedes-Benz® performance under the hood is anchored by a powerful and efficient diesel engine.



About **Interstate 24GTX**

From the large galley and spacious sleeping quarters to the cleverly appointed on-board bathroom, Interstate 24GTX is made for the grand tour that inspired its GT namesake. With belted seating positions for up to seven people and sleeping space for two, you can bring along friends for a day trip or hit the road with a loved one for the road trip of a lifetime. We load up the Interstate 24GTX with every available safety and performance feature offered by Mercedes-Benz – and we include them as standard, not upgrade options. With an Interstate 24GTX, you're traveling in the very best of safety, performance, interior design, comfort, and efficiency every time you hit the road.

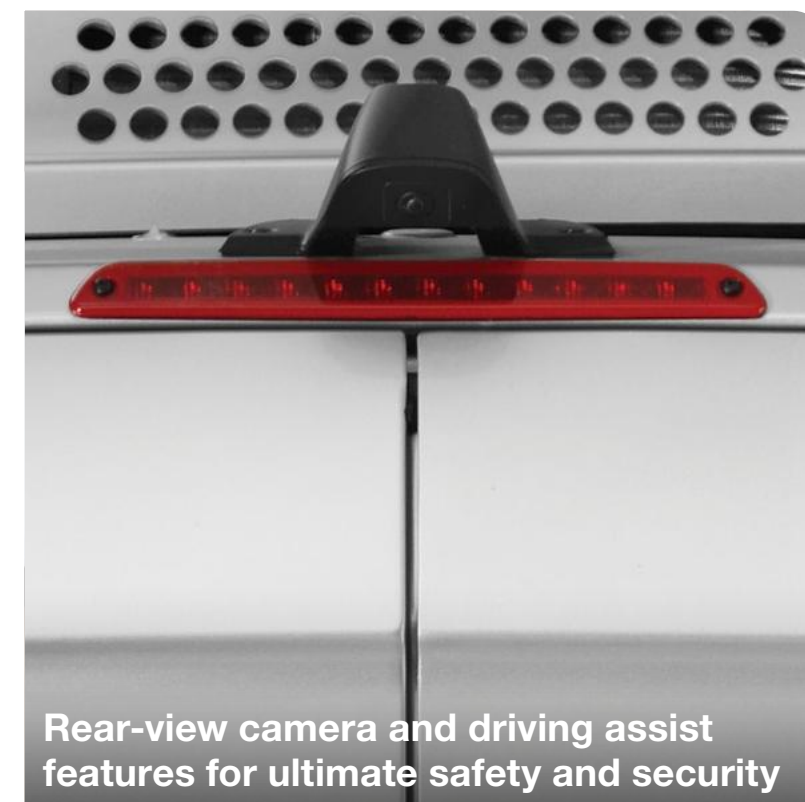
Once you arrive at your destination, conveniences like a full kitchen, an onboard bathroom, charging stations, and two smart flatscreen TVs let you enjoy your time in comfort and style. Swivel the captain's chairs around and catch up on emails at the handy work station. Prepare snacks and drinks on solid surface countertops in the galley. Store accessories in the European-style curved cabinetry. Relax on plush, easy-to-clean Ultraleather™ seating surfaces. No matter where you turn, the Interstate 24GTX is ready to impress.



Rear lounge converts into a large sleeping space



Solid surface countertops, fine wood cabinetry, and luxurious sleeping quarters



Rear-view camera and driving assist features for ultimate safety and security

Interior Décor



Classic Canyon



Stonehaven

Interior Décor



Amber Ridge



Stonehaven Décor Shown



Floor Plan

The Interstate 24GTX has belted seating positions for seven passengers. Front captain's chairs swivel to face a convenient work station on the street (driver's) side. A central galley features a single-burner induction cooktop and deep sink for preparing everything from a gourmet meal to healthy snacks while en route. Across the aisle a wet bath makes for an efficient use of space, with a showerhead that doubles as a faucet, a mirror that extends and swivels, and a totally waterproof toilet paper cover.

The rear of the Interstate 24GTX is anchored by a wide seating area for up to five people around a central table. The seating area converts at the push of a button to a spacious sleeping area. Overhead lockers provide ample space to store dishware, food, bedding, and everything you need to make your journey complete. Behind the seating, rear doors swing open to reveal more storage and a clever table system that's perfect for outdoor entertaining.

Why You'll Love It

You've spent your life dreaming of a grand adventure – now make that adventure a reality in the Interstate 24GTX.

Built for extended journeys or a stylish winter escape, the 24GTX is designed for travelers who want to explore in comfort and confidence.

Premium Air Ride Suspension ensures a smooth ride over any terrain.

Thoughtfully designed windows and screens let fresh air flow freely, while rugged, adventure-ready upgrades and modern conveniences make every trip seamless and unforgettable.



Specifications

| | |
|------------------------------------|--|
| Chassis | Mercedes-Benz® Sprinter 3500 Extended AWD |
| Engine | Mercedes-Benz® 2.0L Turbo Czharged 4-Cylinder High Output Diesel |
| Emissions | BlueTEC SCR Technology, 50 State – EPA/CARB Standards |
| Horsepower/Torque | 208 HP @ 3,600 RPM 332 lb-ft torque @ 1400 - 2400 RPM |
| Transmission | 9G-TRONIC Plus Automatic |
| GVWR/GCWR | 11,030 lbs/15,250 lbs |
| UWV**** | 9,423 lbs |
| OCCC**** | 1,708 lbs |
| Tow Capacity** | Up to 5,000 lbs |
| Axle Ratio | 4,727 |
| Wheelbase | 170" |
| Alternator | 280A |
| Tow Package | Mercedes-Benz® Hitch, 7 Pin Trailer Plug, Brake Control Pre-Wired |
| MPG* | 16-18 Estimated Highway |
| Overall Length | 24' 9" |
| Overall Height | 9' 9" (Including A/C) |
| Overall Width | 7' 8.5" (with Mirrors), 6' 7.5" |
| Interior Height/Width | 6' 2.25" / 5' 10" |
| Tank Capacities | 23 gals (Fresh), 24 gals (Grey), 11 gals (Waste) |
| Diesel Fuel | 24.5 gals |
| Air Conditioner | 13,500 BTU with Soft Start |
| Furnace | Diesel-Fired Hydronic |
| Water Heater | Diesel-Fired Hydronic |
| Heated Tanks | Fresh and Grey Tanks (12 V) |
| Refrigerator and Freezer | 6.6 cu ft with Stainless Insert (12 V) |
| Microwave | 1.2 cu ft Drawer Microwave with Travel Latch |
| Cooktop | 1,000 W Single Burner Induction (True Induction) |
| Safety Components | Smoke and CO ₂ Alarm, Fire Extinguisher and First Aid Kit |
| Plumbing System | Macerator Pump System |
| Chassis Safety System | Mercedes Benz® Adaptive ESP® (Electronic Stability Program) |
| Trailer Safety System | Mercedes Benz® Adaptive Trailer Stability Assist System |
| TV Antenna | Omnι-Directional, VHF/UHF/FM |
| TV Cable/Satellite Port Ethernet | Cable TV Outlets/Hook-ups External Ethernet Port |

| | |
|-----------------------|---|
| TV Satellite | Pre-Wired for Satellite Dish |
| 5G Pre-Wire | Pre-Wired for Connected Service |
| Electrical System | Multiplex Bluetooth App Control System with Touch Screen for Energy Management System |
| Converter/Inverter | 130 A Multi-Stage Charger 3,000 W Pure Sine Inverter (Xantrex) Advanced Power: Deep Cycle Lithium Batteries with Built In Heater - 10.3 kWh |
| Advanced Power System | Advanced Power Plus (Optional): Deep Cycle Lithium Batteries with Built In Heater - 17.2 kWh |
| Secondary Alternator | 311 A (Max) Alternator, 12 V with Regulator |
| Shore Power | 30 A Service with Smart Plug |
| Solar Power | 400 W Solar System |
| Support | 1 Year 24/7 Coach-Net® Roadside Assistance |
| Warranty*** | 2 Year Airstream Limited Warranty 5 Years/75,000 Miles Mercedes-Benz® Chassis 5 Years/100,000 Miles Mercedes-Benz® Engine and Drive Train |

(Chassis specs may vary, contact your Airstream Dealer)

Safety

| | |
|--|-----|
| Multiple Safety Air Bags | STD |
| Active Brake Assist | STD |
| Active Lane Keeping Assist | STD |
| Active Blind Spot Assist | STD |
| Active Distance Assist - Distronic Plus | STD |
| Active Driver Attention Assist | STD |
| Active Rear Cross Traffic Assist | STD |
| Front and Rear Parktronic Parking Assist | STD |
| Traffic Sign Assist | STD |
| Hill Start Assist | STD |
| E Call Assist | STD |
| High Beam Assist | STD |
| Rear Camera Assist | STD |
| Wet Wiper System | STD |
| Blind Spot Monitoring | STD |

Cockpit

| | |
|---|-----|
| Power Adjustable Heated Driver/Passenger Swivel Seats | STD |
| Tilt and Telescopic Leather Steering Wheel | STD |

Cockpit

| | |
|--|-----|
| Advanced Multifunctional Steering Wheel with Capacitive Touch Controls | STD |
| Heated Steering Wheel | STD |
| Steering Wheel with Paddle Shifters | STD |
| Push Button Keyless Start | STD |
| Entry Door Lighting | STD |
| In-Dash Wireless Cell Phone Charging | STD |
| Overhead Map Lights | STD |
| In-Dash Maintenance Monitoring System | STD |
| MBUX Infotainment System (Mercedes-Benz User Experience) Touch Screen, Pinch, Zoom, Voice Recognition, Apple Carplay®, Android® Capability | STD |
| In-Dash Wireless Cell Phone Charging | STD |
| Rear and Side View Camera Monitor | STD |
| Cockpit Carpet Floor Mats | STD |
| Privacy Shades | STD |

Exterior

| | |
|--|-----|
| Durable Black Protective Coating (Front Hood, Bumpers and Lower Side Moldings) | STD |
| Custom Grille | STD |
| 3M® Protective Film Rear Bumper | STD |
| Tenzing Front Brush Guard with HD LED Lights | STD |
| Stylized, Black Aluminum Wheels | STD |
| High Performance LED Headlights | STD |
| Heated Windshield | STD |
| Power Heated Mirrors | STD |
| Power Armless Awning with Auto Retract | STD |
| Rugged, Black Running Boards | STD |
| Locking Service Boxes | STD |
| Exterior Shower with Hot and Cold Water | STD |
| Power Rear Screen | STD |
| Sliding Screen Door | STD |
| Curb and Street Side Exterior Ports forAdditional Solar Panels | STD |
| Exterior TV and Internet Inlets (Coax and Ethernet Cat6) | STD |
| 110 V Outlet | STD |
| Tire Pressure Monitoring Sensors | STD |
| Air Ride Suspension | STD |
| Hydraulic Leveling Jacks | OPT |
| Advanced Power Plus | OPT |

Main Cabin

| | |
|---|-----|
| Signature Aluminum Ceiling and Trim | STD |
| Matte Finish Laminate Cabinetry | STD |
| Flush-Mount and Solid Shut Cabinets | STD |
| Ultraleather® Seating | STD |
| Vinyl with Urethane Covering on Walls and Windows | STD |
| Power Day/Night Window Shades | STD |
| Marine Woven Synthetic Flooring | STD |
| Adjustable LED Lighting | STD |
| Lagun Adjustable Table (2 Mounts) | STD |
| LED Widescreen SMART HDTVs (2) | STD |
| Premium Digital Media Receiver | STD |
| Custom Rear Speakers (2 EA) | STD |
| Power Rear Sofa (70"x 82") | STD |
| USB Charging Ports | STD |
| Pantry with Built-In Drawers and Shelves | STD |
| Exhaust Fan with Rain Sensor | STD |
| Rear Cabin Carpet Kit (Black) | STD |
| Built-In Work Station | STD |
| Overhead Lockers | STD |
| Underbed Interior Storage | STD |

Bathroom (Wet Bath)

| | |
|--------------------------------|-----|
| Toilet | STD |
| Shower | STD |
| Sink with Articulated Mirror | STD |
| Riveted Aluminum Porthole Door | STD |
| Retractable Clothes Line | STD |
| Towel Rack | STD |

Galley

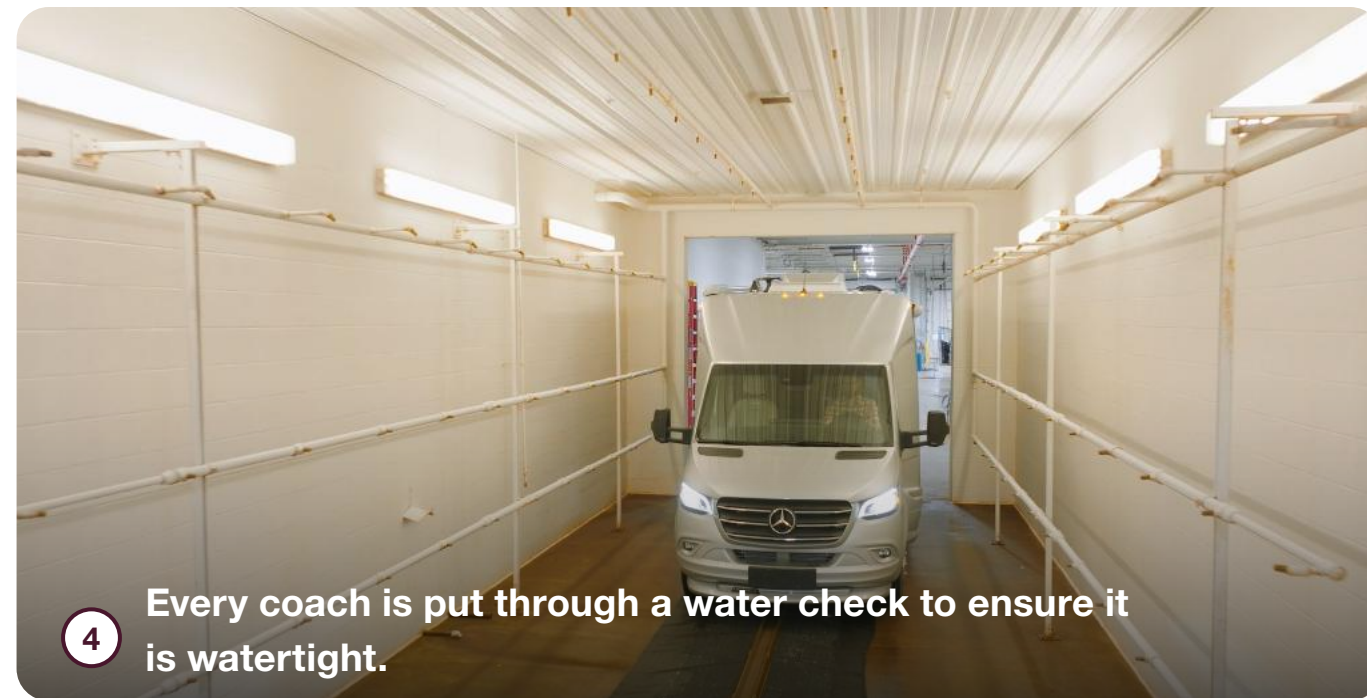
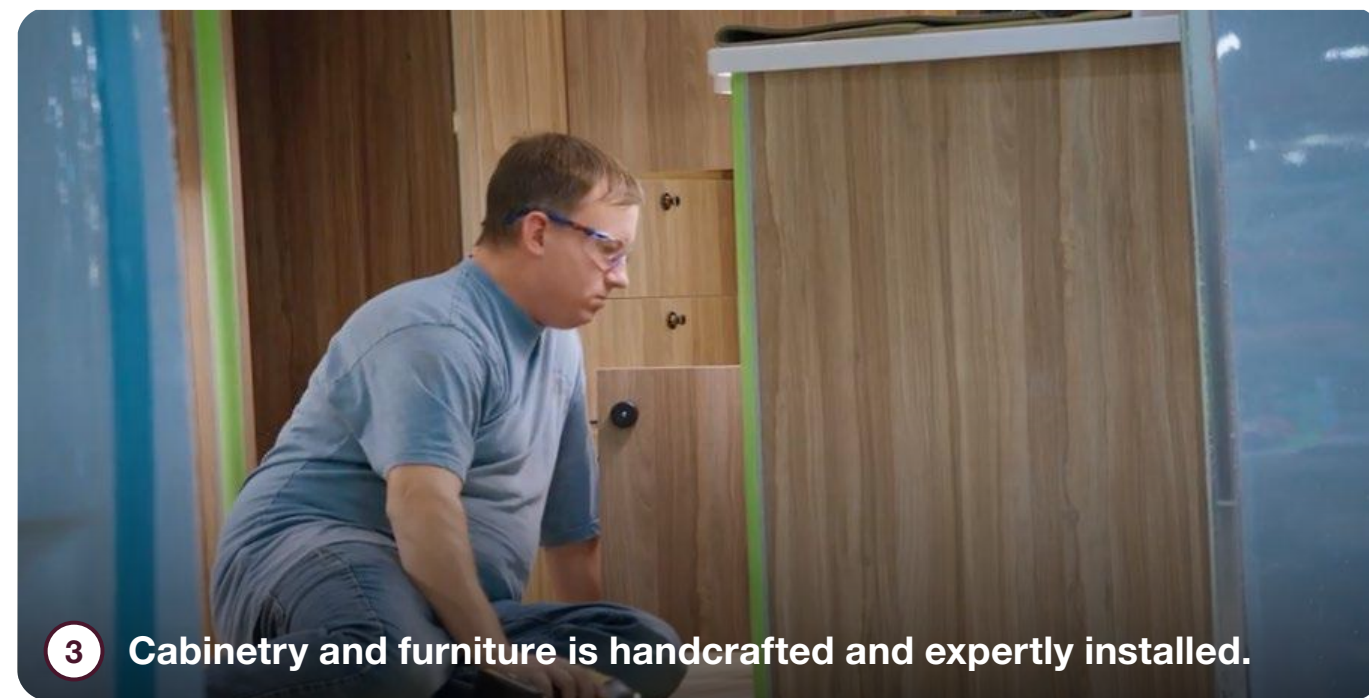
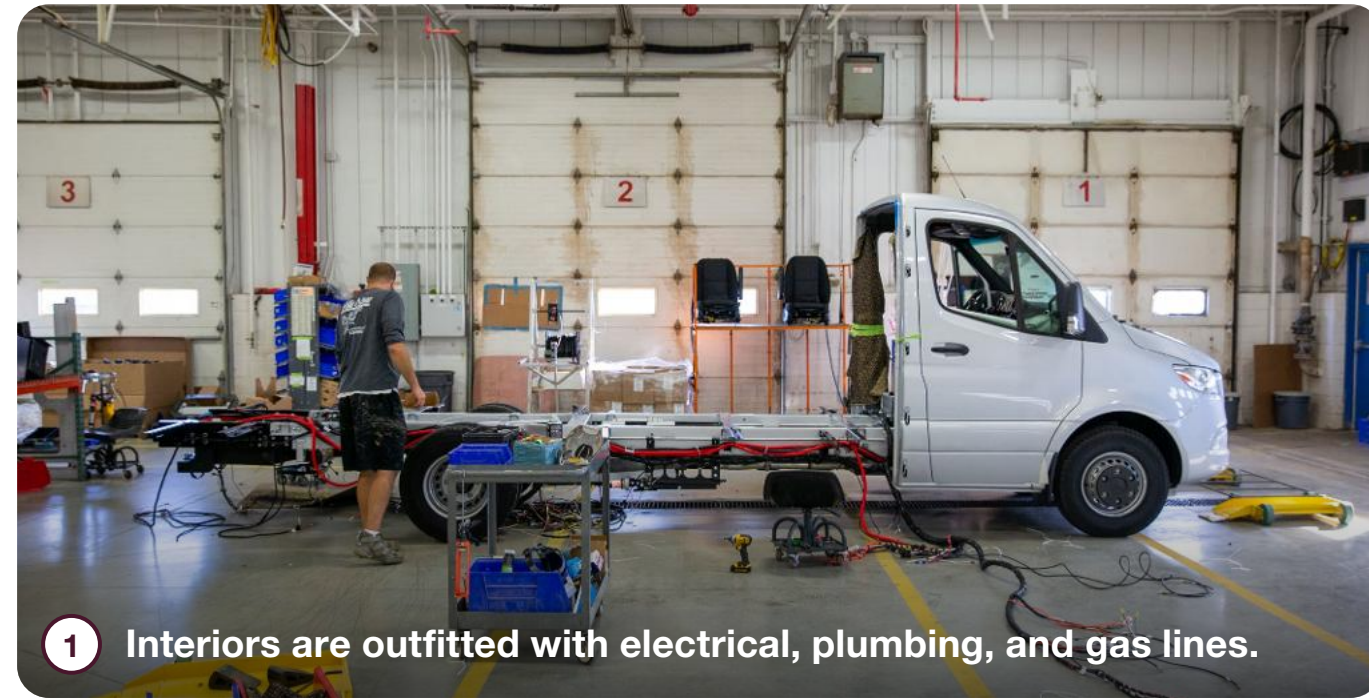
| | |
|--|-----|
| Solid-Surface Countertop with Backsplash | STD |
| Waste Basket and Paper Towel Holder (Built-In) | STD |
| Sink with Cover | STD |
| Single-Burner Induction Cooktop | STD |
| Under Counter Lighting | STD |

* Actual mileage may vary due to load, driving style, and overall conditions.
** Typical tow capacity will vary and is dependent upon build spec and intended vehicle loading with people, cargo, and fluids.
*** New Vehicle Limited Warranty. Individual components may vary. See Owners Manual for specific warranty coverage and information.
**** Weights are approximate. See Vehicle Sticker for specific vehicle information.

How It's Made

Each Mercedes-Benz cab chassis arrives in Jackson Center fully loaded with safety and security features and one of the most powerful and dependable engines under the hood. Our expert craftspeople hand-build the exterior walls and roof in-house while undercarriage features like generators, holding tanks, and batteries are installed. Standard seats are removed and re-upholstered with plush Ultraleather, while the interior is outfitted with electrical wiring harnesses, plumbing, gas lines, and comfort systems. We handcraft every cabinet and storage locker in our woodshop, which are then installed along with the shower, seating, and galley appliances. Extensive paint and fiberglass bodywork complete the exterior. And like every Airstream product, Atlas is put through an extensive water check to ensure there are no leaks before quality inspection teams test every component, system, and function before it goes out the door to a customer.

[Schedule a factory tour](#)





419 West Pike Street,
P.O. Box 629
Jackson Center, OH
45334 USA
937-596-6111

www.airstream.com

AIRSTREAM[®] + **Mercedes-Benz[®]**

Roll with the Best[®]

Product information, specifications, and photography in this brochure were as accurate as possible at time of printing. Photographs may contain some features that are optional on your vehicle.

Since we continually strive to improve our products, actual products may differ. Prices and specifications are subject to change without notice. All capacities are approximate and dimensions are nominal. Some features or options may be different or unavailable in other countries.

WARNING – The recreational vehicle weight must remain within the manufacturer's specified chassis weight limit. Do not overload the recreational vehicle through the addition of water, options, cargo or otherwise. Your safety depends on not overloading the trailer, axles, and tires.

AIRSTREAM[®], the Airstream travel trailer trade dress, and all related model names, slogans, logos, trade dress, and trademarks are owned or used under license by Airstream, Inc. All other trademarks are owned by their respective owners.