

TIFFIN

CLASS-C

MIDAS

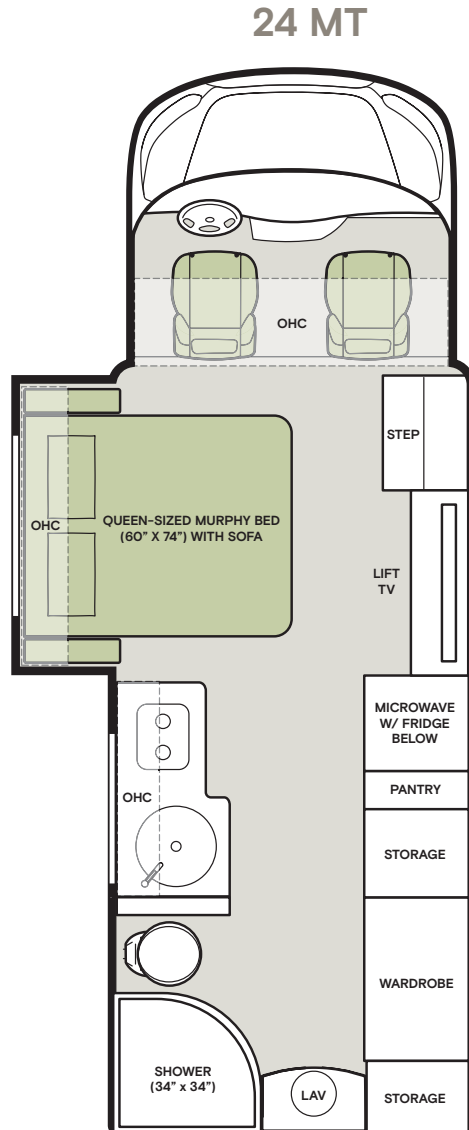
2024



## Floor Plans



The design of every Midas floor plan must meet four essential criteria: Maximum space, Optimal organization, Relaxation plus, and Elegant atmosphere. Tiffin's MORE Plans offer your family the most comfortable layout for life on the road.



## Premium Paint System

Our eight-step, full-body paint system features premium grade paints sealed with three layers of clear coat with ultraviolet protection. An additional layer of high-performance film protects the front of the coach and select areas.



G1 ICEBURG



G1 MIDNIGHT



G1 PALLADIAN



G1 DOVETAIL

Images shown are representations of paint layouts only and do not reflect all exterior features or options. Colors shown may slightly differ from colors on actual product.

Initial MY2024 Model Change Plans, Subject to Change in Full Production

If optional furniture combinations are selected, window locations may vary from diagram shown. All options may not be available in every model. Because of progressive improvements and specifications, standard and optional equipment are subject to change without notice or obligation.

For a complete and up-to-date list of available options and specifications, visit [tiffinmotorhomes.com](http://tiffinmotorhomes.com).

## Interior Décor

Make it all yours. Personalize your décor experience with the Midas' customization options. The Midas' luxury design options allow you to arrive and live in style, wherever your travels and adventures take you.

Colors of interior decor options shown may vary from colors on actual product.

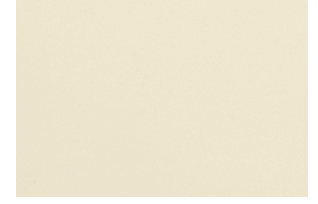
## CABINETS



SANDSTONE



SHADOW



WHITE LINEN

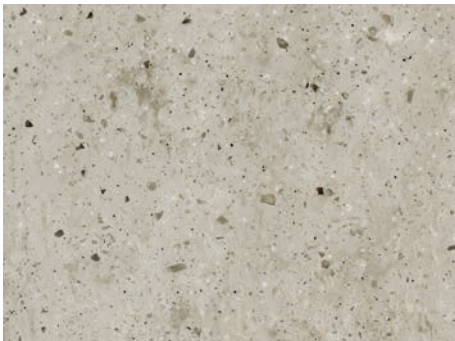
### MINK



BEDROOM



WINDOW TREATMENT



COUNTERTOP



FURNITURE



FLOORING



WALLCOVERING

### CHAMPAGNE



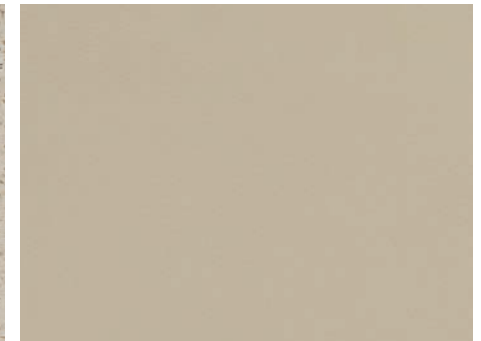
BEDROOM



WINDOW TREATMENT



COUNTERTOP



FURNITURE



FLOORING



WALLCOVERING

# Specifications, Features, and Options

KEY : S : Standard Feature | O : Optional Feature; Additional costs may apply | D : Dependent; Availability is dependent on selection of another option | — : Not Available

WEIGHTS AND MEASURES	
DIMENSIONS	
Overall Length (approx.)	24' 6"
Wheel Base	178"
Overall Width	90"
Overall Height	10' 6"
Interior Height	78"
Interior Width	87"
Square Footage (approx.)	141
CAPACITIES	
Fuel Tank (gallons)	31
Fresh Water (gallons)	38
Grey Water (gallons)	23
Black Water (gallons)	22
LPG Tank (gallons)	12.2
WEIGHT LIMITS	
GVWR (pounds)	11,000
Hitch Rating (pounds)	2,000
GCWR (pounds)	13,000
QUANTITIES	
Number of Slideouts	1
Sleeping Capacity	2
Sleeping Areas	1
Seat Belts	4
Seating Capacity	4

## CHASSIS AND DRIVETRAIN

- Ford® 350 HD AWD Transit Cutaway Chassis
- Ford® 3.5-Liter EcoBoost® 310 HP Gas Engine with 400 lb-ft Torque <sup>1</sup>
- All-wheel Drive
- 210-Amp Alternator
- Ford® 10-Speed SelectShift® Automatic Transmission with Overdrive
- Aluminum Wheels
- Front and Rear 205/75R 16C Tires
- (1) 12-Volt Flooded Lead-Acid Chassis Batteries
- Front Radiator
- Four Wheel ABS Brakes
- Manual Parking Brake
- Tire Pressure Monitoring
- Post-collision Braking
- Forward Collision Warning
- Lane Keeping System
- Pre-Collision Assist with Automatic Emergency Braking (AEB)
- Adaptive Cruise Control
- Electric Power Assisted Steering (EPAS)

<sup>1</sup> Peak horsepower achieved at 5,000 RPM. Peak torque achieved at 2,500 RPM.

## CONSTRUCTION

- Seamless One-piece Gel-coat Fiberglass Molded Roof Cap
- One-piece Molded Gel-coat Fiberglass Front and Rear Caps

## ELECTRICAL

- Liquid Propane (LP) Coach <sup>1</sup>
- Interior Entryway Spyder System Main Monitor
- Additional Spyder System Switch Panel
- Spyder Controls Multiplex System
- 4.0-Kilowatt Onan® Gas Generator
- 2,000-Watt Pure Sine Wave Inverter
- (2) 12-Volt Flooded Lead-Acid House Batteries <sup>2</sup>
- (1) 13,500-BTU Air Conditioner
- Wall-mounted Thermostat with Built-in Temperature Sensor
- (1) 20,000-BTU Ducted Furnace
- SmartPlug® Detachable 30-Amp Shore Power Cord
- (1) 200-Watt Solar Panel with (1) 30-Amp Controller
- HD Over-the-air Antenna
- Prep for In-motion Satellite
- Park Cable Hook-up
- 12-Volt Breaker Panel
- 12-Volt Disconnect Switch
- 110-Volt Exterior Receptacle **NEW**
- Surge Guard® Transfer Switch
- USB Receptacles Throughout Coach

<sup>1</sup> Propane is used to power the ducted furnaces, the water heater, and the liquid propane cooktop.

<sup>2</sup> House batteries are stored under the entry steps.

## PLUMBING

- Truma AquaGo™ Comfort Plus Instant Water Heater
- Water Heater Bypass System
- Aqua View Showermiser™
- Water Filter
- Water Pump
- Low-point Water Drain Lines
- Black Holding Tank Flush System
- Gravity Water Fill
- Heated Fresh and Holding Tanks via Tank Pads
- Tank Level Monitor System
- Centralized Exterior Sewer Bay with Gravity Black and Grey Evacuation Ports
- Exterior Rinse Hose with Shower Head
- Fresh Water Hookup for City Water and Tank Fill
- Sewer Hose Storage

## EXTERIOR

- Full-body Paint with (2) Layers of Clear Coat
- High Performance Protective Film on Front Cap, Front Cab, and Other Select Areas
- (1) Girard® Side-mounted Powered Patio Awning with Integrated LED Lighting
- Lockable Handles on Compartment Doors
- Motion-sensor Lights in Cargo Bay
- Flush-Style Tinted Windows with Tip-out Feature
- Exterior Patio Light
- Fog Lights
- Heated, Electrically Adjustable Side-view Mirrors
- Lightweight Entry Door
- Electric Single Entrance Step
- Rear Mud Guards

## INTERIOR

- Handcrafted Cabinetry
- Mild Steel Step Well with Composite Steps
- Solid Surface Galley Countertop
- Dimmable LED Lighting
- Carbon Monoxide Detector
- LPG Leak Detector
- Smoke Detector
- Fire Extinguisher
- Privacy Shades
- Soft-closing Drawers
- Powered Roof Vents
- 43" Smart TV
- Interior Grab Handle at Entry Door

INTERIOR OPTIONS		24 MT
Interior Décor Packages	Champagne	O
	Mink	O
Ultraleather	Richloom Etna Linen Vinyl Upholstery <sup>1</sup>	D
	Richloom Seaport Bamboo Vinyl Upholstery <sup>2</sup>	D
Cabinetry Color	Sandstone	O
	Shadow	O
	White Linen	O
Floor Tiles	Artisan Misty Luxury Vinyl Tile <sup>3</sup>	D
	Hickory Way Luxury Vinyl Tile <sup>4</sup>	D

<sup>1</sup> Always paired with Champagne Fabric Suite.

<sup>2</sup> Always paired with Mink Fabric Suite.

<sup>3</sup> Always paired with Mink interior décor package.

<sup>4</sup> Always paired with Champagne interior décor package.

## DRIVER'S COMPARTMENT

- Black Leather Adjustable Driver and Passenger Seats
- Backlit Instrument Cluster with Message Center
- Rain Sensor for Windshield Wipers
- Automatic High-beam Headlamps
- Automatic LED Headlights
- Color Back-up Camera
- 3-point Safety Belts
- Driver and Passenger Air Bags
- SOS Post-Crash Alert System™ <sup>1</sup>
- Safety Canopy™ Side-Curtain Airbags
- Colored Multi-Function Touch Screen AM/FM Stereo with SYNC® 3, Bluetooth, Navigation, and Dual USB Ports
- Smartphone Integration For Apple Carplay® and Android™ Auto
- Center Stack Console with Integrated Shifter
- Overhead Storage
- A-pillar Assist Handles
- Vinyl Floor Covering

<sup>1</sup> The SOS Post-Crash Alert System™ causes the headlights to flash and the horn to beep once any air bag inside the coach deploys.

## DINETTE AND LIVING AREA

OPTIONS	24 MT
Driver Side Queen-sized Murphy Bed (60" x 74") with Sofa	S

## KITCHEN

- Stainless Steel Convection Microwave
- One-Burner Induction Cooktop
- Stainless Steel Single Bowl Sink and Faucet with Built-in Sprayer
- Galley Overhead Cabinets
- Solid Surface Galley Countertop

KITCHEN OPTIONS		24 MT
Refrigerator	12-Volt, 8.0-Cubic Foot Refrigerator	S
	Gas-Electric, 7.0-Cubic Foot Refrigerator	O

## BEDROOM

- Queen-sized Murphy Bed (60" x 74")
- Overhead Cabinet

## BATHROOM

- (1) Bathroom
- Undermount Porcelain Sink with Chrome Faucet
- Solid Surface Lavatory Top
- 34" x 34" Corner Shower with Sliding Glass Door
- Handheld Shower Head
- Shower Skylight
- Towel and Toilet Paper Holders
- Roof Vent Fan
- Base Cabinet

FOR SALES CALL 256-356-8661, PARTS & SERVICE CALL 256.356.0261 OR VISIT TIFFINMOTORHOMES.

105 2ND ST NW RED BAY, AL 35582 [f](#) [i](#)



All trademarks and logos are owned or used under license by Tiffin Motor Homes, Inc. and include, but are not limited to: TIFFIN®, MANY ADVENTURES. ONE DREAM™, ALLEGRO®, ALLEGRO BREEZE®, ALLEGRO RED®, PHAETON®, ALLEGRO BUS®, ZEPHYR®, WAYFARER®, ROUGHING IT SMOOTHLY®, OPEN ROAD®, POWERGLIDE®, CAHABA®, BYWAY™, CONVOY™, BRONZE™, and associated logos and emblems. Unauthorized use of any trademark of Tiffin Motor Homes, Inc. is strictly prohibited.

© Copyright 2024 Tiffin Motor Homes, Inc.

For all information concerning the limited warranty provided by Tiffin, please refer to the full written limited warranty set forth on the Tiffin website or held by our authorized dealerships. Please note, some interior furnishings not included. Revised: 8/29/23