

CLASS-A

# ALLEGRO RED 360





37 BA with G4 Rustic Canyon

2022 ALLEGRO RED 360

# CRAFTED TO THE HIGHEST STANDARDS. YOURS.

Inside and out, Tiffin's acclaimed Allegro RED 360 just keeps getting better. The newly updated 2022 RED 360 adds even more exclusive features, turning every trip into an adventure in excellence. Its powerful Rear Engine Diesel (RED) delivers spirited performance, an impressive 10,000 lb towing capacity, and the all-new exterior body dials up the RED 360's already standout style. Freightliner's Roadwatch Package, with its array of innovative safety features, comes standard. Then there's the exceptionally appointed cabin, where you're surrounded by entertainment, cooking and comfort features designed to delight, and multiple slide-out rooms and 7' ceilings that take space to new heights. The new 2022 RED 360. As unforgettable as the journeys you'll take in it.

Top to bottom: King Mattress; Bathroom; Driver's Compartment. All interiors shown are 33 AA with Natural Alder cabinets, Dark Brew II décor.



NEW

These other top-of-the-line features set the Allegro RED 360 apart.

As an innovator in the RV industry, Tiffin Motorhomes has introduced many unique amenities to enhance your enjoyment of our coaches. Features may not be available on all models or floor plans. Please see specifications for details and more.

Clockwise from top: Bedroom Cabinets and Optional Stacked Washer/Dryer; Driver Side Sofa Bed and Recliner; Kitchen with Extended Countertop; Passenger Side Booth Dinette. All interiors shown are 33 AA with Natural Alder cabinets, Dark Brew II décor.



## Premium Paint System

Our eight-step, full-body paint system features premium grade paints sealed with three layers of superclear coat with ultraviolet protection. An additional layer of high-performance film protects the front of the coach and select areas.



G4 EURO BLUE



G4 NASA



G4 FIRE OPAL



G4 RUSTIC CANYON



G4 FROSTED GRANITE

Floor Plans



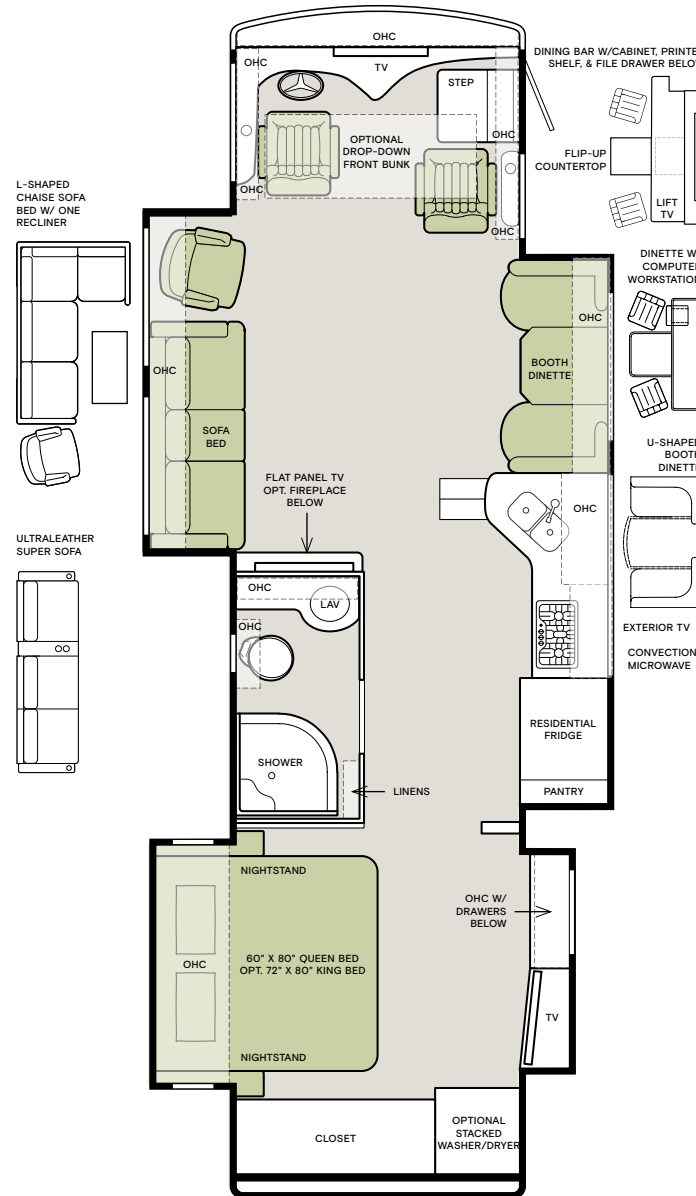
The design of every Allegro RED 360 floor plan must meet four essential criteria: Maximum space, Optimal organization, Relaxation plus, and Elegant atmosphere. Tiffin's MORE Plans offer your family the most comfortable layout for life on the road.

If optional furniture combinations are selected, window locations may vary from diagram shown.

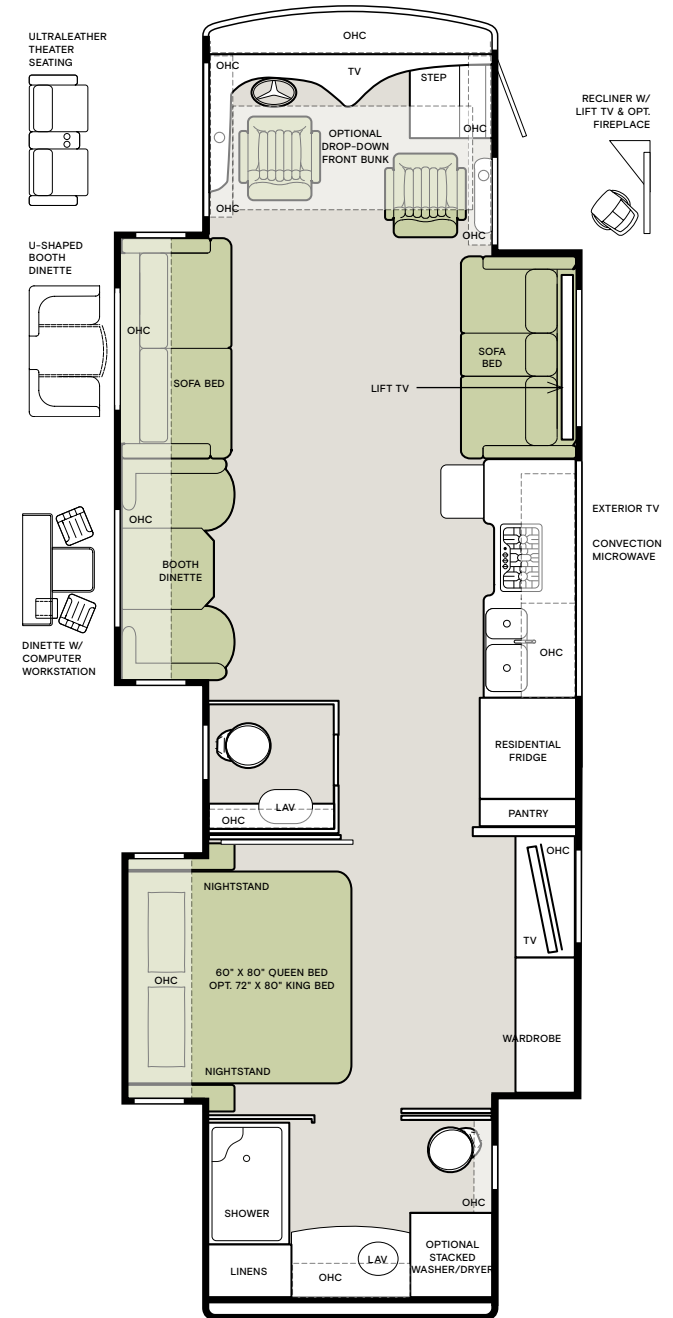
All options may not be available in every model. Because of progressive improvements and specifications, standard and optional equipment are subject to change without notice or obligation.

For a complete and up-to-date list of available options and specifications, visit [tiffinmotorhomes.com](http://tiffinmotorhomes.com).

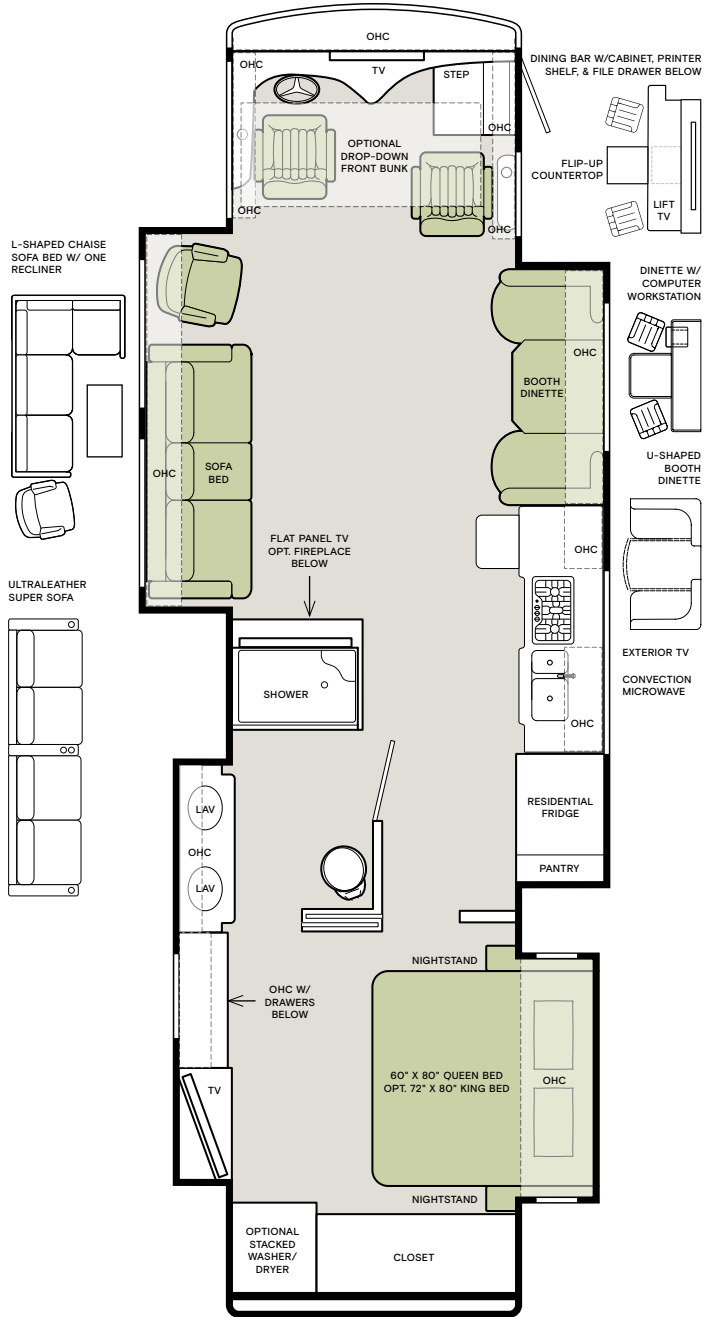
33 AA



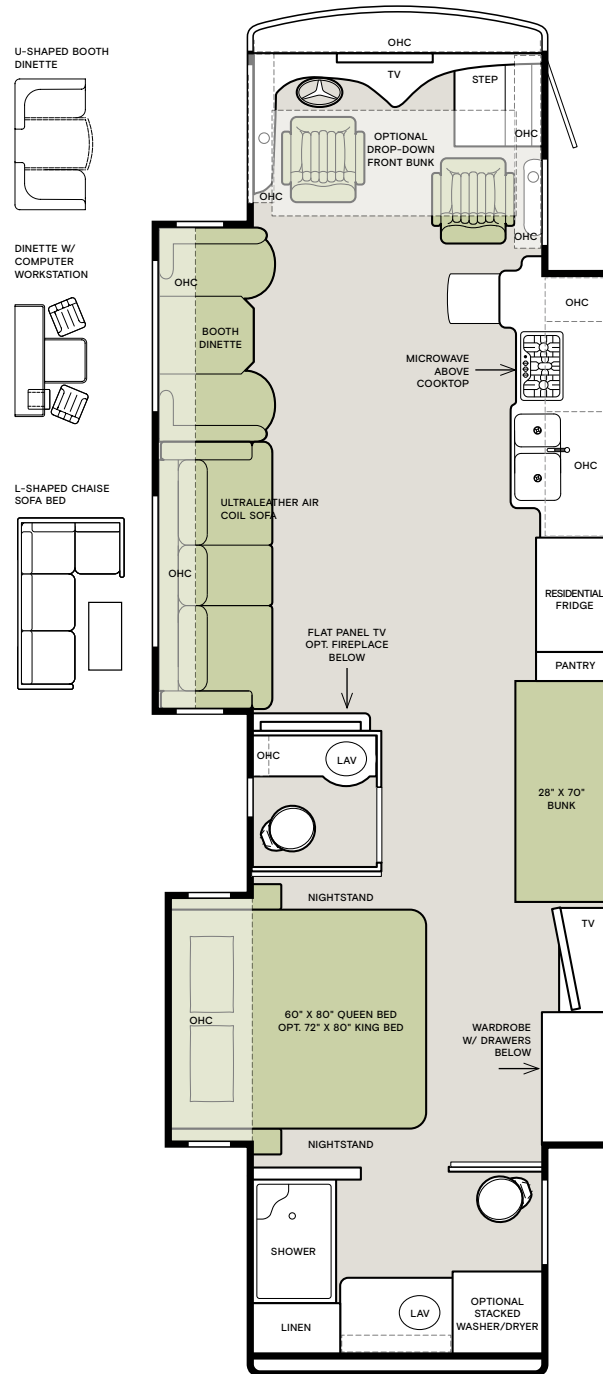
37 BA



# 37 PA



# 38 KA



## Specifications

### CHASSIS

- Freightliner® XCM Modular Rail Rear Engine Diesel Chassis
- Cummins ISB 6.7
- Allison® 3000 MH 6-speed Automatic Transmission with Lock-up
- Peak Torque (lb – Ft. Max Net) 800 @ 1,800 RPM
- Peak HP 360 HP @ 2,600 RPM
- Adaptive Cruise Control
- Collision Mitigation with Forward Warning and Active Braking
- Electronic Stability Control
- Automatic Traction Control
- Tire Pressure Monitoring
- Air Ride Suspension
- Full Air Brakes
- Single Stage VGT (Variable Geometry Turbocharger) Engine Brake
- Emergency Start Switch
- Four Aluminum Wheels
- Hydraulic Automatic Leveling Jacks

CHASSIS SPECIFICATIONS	33 AA	37 BA	37 PA	38 KA
GAWR—Front (lb)	14,320	14,320	14,320	14,320
GAWR—Rear (lb)	23,000	23,000	23,000	23,000
GVWR (lb)	37,320	37,320	37,320	37,320
GCWR (lb)	47,320	47,320	47,320	47,320
Wheel Base	198"	234"	252"	252"
Tire Size	275/80R22.5	275/80R22.5	275/80R22.5	275/80R22.5
Fuel Tank (gal.) — Dual Fuel Fill	100	100	100	100
DEF Tank (gal.) <sup>1</sup>	13	13	13	13
Alternator Amps	160	160	160	160
Hitch Rating (lb) <sup>2</sup>	10,000	10,000	10,000	10,000

<sup>1</sup> Diesel Exhaust Fluid (DEF) is the active component used in Selective Catalytic Reduction (SCR) engines to reduce nitrogen oxide emissions by 90% to meet EPA standards.

<sup>2</sup> Maximum Trailer Weight is dependent on the loading and towing variables which include the GVWR, GAWR and GCWR, as well as adequate trailer brakes.

WEIGHTS AND MEASURES	33 AA	37 BA	37 PA	38 KA
Overall Length (approximately) <sup>3</sup>	35' 2"	38' 6"	39'	39' 6"
Overall Height (maximum)	12' 10"	12' 10"	12' 10"	12' 10"
Interior Height	84"	84"	84"	84"
Overall Width <sup>3</sup>	101"	101"	101"	101"
Interior Width	96"	96"	96"	96"
Fresh Water (gal.)	90	90	90	90
Black Water (gal.)	50	50	50	50
Grey Water (gal.)	70	70	70	70
LPG Tank (gal.; can only be filled to 80% capacity)	24	24	24	24
Basement Storage (cubic ft. — app.)	83.75	119	119	119
Minimum Garage Height	14'	14'	14'	14'

<sup>3</sup> The approximated coach width and length does not include side view mirrors and rear ladders.

### PLUMBING AND ELECTRICAL

- 8.0 kw Onan® Generator
- Two 15 K BTU Roof ACs with Heat Pumps
- Heated Holding Tank Compartment
- Six 6 V House Batteries
- 50 Amp Shore Power Integrated with SurgeGuard
- Black Holding Tank Flush System
- Exterior Rinse Hose/Shower
- Gravity Water Fill
- 110 V Exterior Receptacle
- Tank Level Monitor System
- Truma Gas Continuous Water Heater<sup>4</sup>
- 2000 Watt Sine Wave Inverter
- Extraordinaire™ AC System
- Spyder Multiplex Controls with App Compatibility
- Digital TV Antenna
- Cable TV Ready
- External Tripod Satellite Hook-up
- AquaView ShowerMiser
- Two Ducted Furnaces
- Rotary Disconnect Switches for House and Chassis Batteries

PLUMBING AND ELECTRICAL OPTIONS	33 AA	37 BA	37 PA	38 KA
All-electric Coach: Includes Aqua-Hot Hydronic Heating System with Continuous Hot Water and Induction Cooktop	O	O	O	O
Three 15 K BTU ACs with 10 kw Onan Generator	—	O	O	O
Prep for Solar Panels	O	O	O	O
One Solar Panel	O	O	O	O
Three Solar Panels	O	O	O	O
CB Antenna	O	O	O	O
Wi-Fi Ranger	O	O	O	O
In-motion Satellite Dish <sup>5</sup>	O	O	O	O
Prep for Winegard® TRAV'LER	O <sup>6</sup>	O	O	O

<sup>4</sup> Not available with All-electric option.

<sup>5</sup> High-definition programming is not available on a domed satellite antenna unless you subscribe to DISH Network®.

<sup>6</sup> In-motion Satellite Dish and Prep for Winegard TRAV'LER cannot be optioned together on the 33 AA.

### EXTERIOR

- Fiberglass Front and Rear Caps
- Tinted One-piece Windshield
- Horizontal Mounted Wipers
- Automatic Headlights
- Chrome Heated Power Mirrors with Integrated Turn Signal
- Exterior Patio Light
- Girard Power Patio and Door Awnings with LED Lighting
- Girard Slide-out Toppers
- Double Electric Step
- 1/4" Thick Single Pane Windows
- Convenient Access Doors with Gas Shocks
- Single Handle Lockable Storage Door Latches
- Undercoating
- Roof Ladder
- Exterior Storage Compartment Lights
- Full-body Paint with Protective Film on Front Cap and Selective Areas
- Exterior Flat Panel TV
- Air Horns
- Mud Flap with Diffuser
- Charcoal Carpet Cargo Walls

EXTERIOR OPTIONS	33 AA	37 BA	37 PA	38 KA
Exterior Slide-out Tray	O	O	O	O
One Roof-mounted Awning	O	O	O	O



## INTERIOR

- Raised Panel Handcrafted Cabinet Doors
- Handcrafted Cabinet Fascias
- Soft Touch Vinyl Ceiling
- Flat-panel TVs
- Centralized Entertainment Center with BluRay® Player
- Sound Bar Sound System with Living Area TV
- Ceramic Tile Flooring (Excluding Slide-outs)
- Treated Carpet and Fabrics
- Soft-close Drawer Slides
- Solar and Privacy Shades
- Power Roof Vents
- Smoke Detector
- Carbon Monoxide Detector
- LED Lighting
- LPG Leak Detector

INTERIOR OPTIONS	33 AA	37 BA	37 PA	38 KA
Central Vacuum Cleaner	O	O	O	O
Stacked Washer/Dryer	O	O	O	O

DECOR OPTIONS	33 AA	37 BA	37 PA	38 KA
Handcrafted Cabinetry	Amber Glazed	O	O	O
	Shadow	O	O	O
	Natural Alder	O	O	O
Fabric Suites	Dark Brew II	O	O	O
	Silver Light III	O	O	O
	Urban Putty II	O	O	O
Floor Tiles	Vicinity (Matte Finish)	S	S	S
	Articulo White (Matte Finish)	O	O	O
	Gold Heat® Heated Tile Floor	O	O	O
Ultraleathers	Belgian	O	O	O
	Cocoon	O	O	O

## DRIVER'S COMPARTMENT

- Freightliner DriveTech Steering Wheel
- Tilt and Telescoping Steering Wheel Column with Foot Pedal
- Freightliner Optiview LCD Dash Display
- Adjustable Brake and Accelerator Pedals
- Driver-focused Wraparound Dash
- Tilt-out Dash Drawer
- Color Back-up Monitor
- CD Player and AM/FM Stereo
- Satellite-ready Radio (subscription required)
- 12 V Dash Receptacle
- Power Solar and Privacy Windshield Shades
- Manual Solar and Privacy Shades on Side Windows
- USB Dash Receptacle
- Fire Extinguisher
- Adjustable Seatbelt Brackets
- Ultraleather Power Driver and Passenger Seats with Passenger Footrest
- Power Solar and Privacy Window on Passenger Side
- Power Step Well Cover
- Overhead Flat Panel TV

DRIVER'S COMPARTMENT OPTIONS	33 AA	37 BA	37 PA	38 KA
In-dash Navigation System	O	O	O	O
Front Overhead Bunk	O	O	O	O
Vertical Slide Open Window on Passenger Side	O	O	O	O

## LIVING AREA/DINETTE OPTIONS:

	33 AA	37 BA	37 PA	38 KA
Ultraleather Booth Dinette/Sleeper on Passenger Side	S	—	S	—
Ultraleather Booth Dinette/Sleeper on Driver Side	—	S	—	S
Ultraleather U-shaped Dinette (Non-sleeper) on Passenger Side	O	—	O	—
Ultraleather U-shaped Dinette (Non-sleeper) on Driver Side	—	O	—	O
Dinette with Computer Workstation on Passenger Side	O	—	O	—
Dinette with Computer Workstation on Driver Side	—	O	—	O
Dining Bar with Lift TV on Passenger Side <sup>7</sup>	O	—	O	—
Ultraleather Air Coil Sofa and One Recliner on Driver Side	S	—	S	—
Ultraleather DE Sofa/Sleeper and Lift TV on Passenger Side	—	S	—	—
Ultraleather Recliner and Lift TV on Passenger Side	—	O	—	—
Ultraleather L-shaped Sofa and One Recliner on Driver Side	O	—	O	—
Ultraleather Air Coil Sofa on Driver Side	—	S	—	S
Ultraleather L-shaped Sofa on Driver Side	—	—	—	O
Ultraleather Super Sofa on Driver Side	O	—	O	—
Ultraleather Theater Seating on Driver Side	—	O	—	—
Fireplace on Driver Side	O	—	O	O
Fireplace on Passenger Side (only available with Ultraleather Recliner with Lift TV)	—	O	—	—
Bunk Beds (70" x 32") with Convertible Wardrobe on Passenger Side	—	—	—	S

<sup>7</sup> Deletes Mid-section TV and Overhead Cabinet above Dining Area.

## KITCHEN

- Residential Refrigerator
- Double Bowl Kitchen Sink with Single Lever Chrome Faucet
- Panoramic Galley Window
- Solid Surface Galley Countertop, Sink Cover, and Cooktop Cover
- 3-burner Cooktop with Convection Microwave

KITCHEN OPTIONS	33 AA	37 BA	37 PA	38 KA
Oven with Convection Microwave <sup>8</sup>	O	O	O	O
Dishwasher <sup>8</sup>	O	O	O	O
Expand-an-island	S	S	S	S

<sup>8</sup> Cannot option Dishwasher and Oven with Convection Microwave together.

## BEDROOM

- Wardrobe with Automatic Light
- Bed Comforter with Throw Pillows
- Flat-panel TV
- Memory Foam Queen Mattress (60" x 80")
- Solar/Privacy Shades
- Ceiling Fan

BEDROOM OPTIONS	33 AA	37 BA	37 PA	38 KA
Memory Foam King Bed Mattress (72" x 80")	O	O	O	O
Egress Rear Exit	O	O	O	O

## BATHROOM

- Medicine Cabinet
- Skylight and LED Light in Shower
- Molded One-piece Fiberglass Shower
- Solid Surface Vanity Top
- Roof Vent Fan

Because of progressive improvements and specifications, standard and optional equipment are subject to change without notice or obligation. For a complete and up-to-date list of available options and specifications, visit [tiffinmotorhomes.com](http://tiffinmotorhomes.com).

## Interior Décor

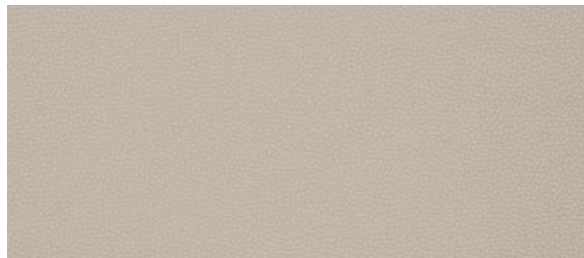
Make your experience on the road all your own. Express yourself by choosing the interior appointments such as cabinet finishes, flooring, and décor ensembles for every part of your motorhome. In the 2022 Allegro RED 360, you'll be able to go in style no matter where you go.

Because of progressive improvements and specifications, standard and optional equipment are subject to change without notice or obligation. For a complete and up-to-date list of available options and specifications, visit [tiffinmotorhomes.com](http://tiffinmotorhomes.com).

## ULTRALEATHER



BELGIAN



COCOON

## CABINETS



AMBER GLAZED



SHADOW



NATURAL ALDER

## FLOOR TILE



VICINITY (S)

Matte Finish Tile



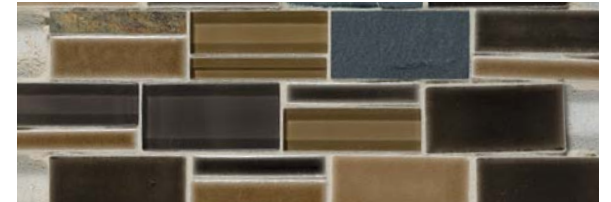
ARTICULO WHITE (O)

Matte Finish Tile

## DARK BREW II



WINDOW TREATMENT



BACKSPLASH



COUNTERTOP

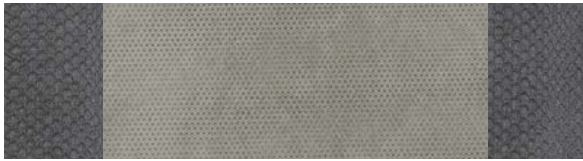


LIVING ROOM



MASTER SUITE

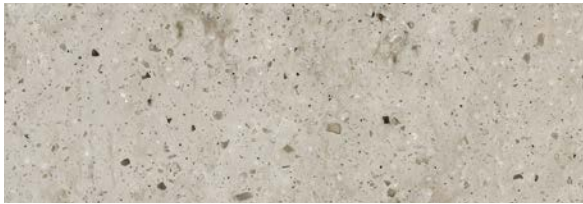
SILVER LIGHT III



WINDOW TREATMENT



BACKSPLASH



COUNTERTOP



LIVING ROOM



MASTER SUITE

URBAN PUTTY II



WINDOW TREATMENT



BACKSPLASH



COUNTERTOP



LIVING ROOM



MASTER SUITE

1

YEAR OR 12,000 MILES  
LIMITED WARRANTY

5

YEARS OR 50,000 MILES  
DELAMINATION  
LIMITED WARRANTY

10


YEARS OR 50,000 MILES  
CONSTRUCTION  
LIMITED WARRANTY

1

YEAR COACH  
ROADSIDE SERVICE

∞

ONGOING  
CUSTOMER SUPPORT

FOR PARTS & SERVICE CALL 256.356.0261 OR VISIT [TIFFINMOTORHOMES.COM](http://TIFFINMOTORHOMES.COM)  
105 2ND ST NW RED BAY, AL 35582  



**TIFFIN**

MOTORHOMES

©2021 Tiffin Motorhomes, Inc. Allegro®, Allegro Breeze®, Allegro RED®, Phaeton®, Allegro Bus®, Zephyr®, Wayfarer®, Roughing It Smoothly®, Open Road®, PowerGlide®, Pusher® and Cahaba® are registered trademarks of Tiffin Motorhomes, Inc. All rights reserved.  
For all information concerning the limited warranty provided by Tiffin, please refer to the full written limited warranty set forth on the Tiffin website or held by our authorized dealerships. Please note, some interior furnishings not included.