

## RENEGADE WARRANTY

Renegade MY 2021 motorhomes are covered by a 1-year unlimited miles limited warranty, plus a 3-year 36,000-mile limited structural warranty.

All Renegade motorhome chassis, engines and transmissions, and drivetrain warranties are provided and administered by their respective manufactures. For specific information about these warranties, ask your dealer or contact Renegade RV.



**Renegade**  
RV  
REVGROUP

*Confidence to go anywhere*

52216 SR 15 Bristol, IN 46507  
888.522.1126 | [RenegadeRV.com](http://RenegadeRV.com)

Features and options may vary from descriptions without notice.

VIENNA  
2021

EXTREME LUXURY

EXTREME PURPOSE

EXTREME DURABILITY

VIENNA

Renegade  
RV

REV GROUP

Confidence to go anywhere





## *Renegade* VIENNA

The Renegade Vienna is a luxurious and versatile motorhome designed with the utmost in refined craftsmanship and extraordinary attention to detail. From solid hardwood cabinets to ample storage including exterior luggage compartments, the Vienna feels like a home, but is built for traveling.

### **Featured to the left:**

Shown here is the 25VRMC floorplan in the Vanilla Frost Décor which creates a sleek and stylish interior. Featured in this floorplan is our murphy bed that is both functional and comfortable for sleeping. Adding to the stunning décor is the Burnished Sable Cabinetry with the optional high sheen finish. Added finishes include a gorgeous solid surface countertop featuring a lighted edge (shown here with the optional induction cooktop).



# THE *Renegade* VIENNA AT A GLANCE

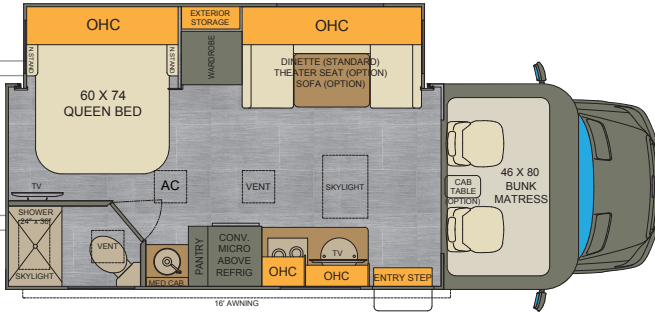
Exterior height	<b>11'</b>	Fuel capacity	<b>24.5 Gallons</b>
Exterior width	<b>92 1/4"</b>	Fresh water capacity	<b>34 Gallons</b>
Exterior length	<b>24' 11"</b>	Grey water capacity	<b>29 Gallons</b>
Interior height	<b>80.5"</b>	Black water capacity	<b>29 Gallons</b>
Interior Width	<b>89.5"</b>		



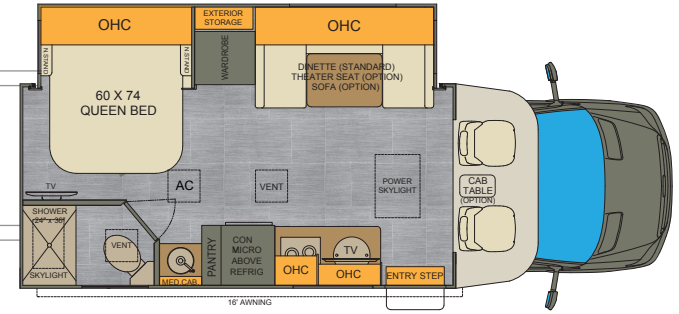
## KEY FEATURES

- Full paint – five color options
- Full coach multiplex system with app control
- Four point hydraulic leveling system with app control
- Full length awning with lateral arms and LED Lights
- Side hinged exterior storage doors
- Convenient and stored LP quick connect
- Truma™ AquaGo Comfort Plus water heater
- Four aluminum wheels
- 1200w Magnum inverter
- Power skylight with screen and black out shade
- Two Maxx Air™ fans with rain sensors
- Hardwood maple cabinetry

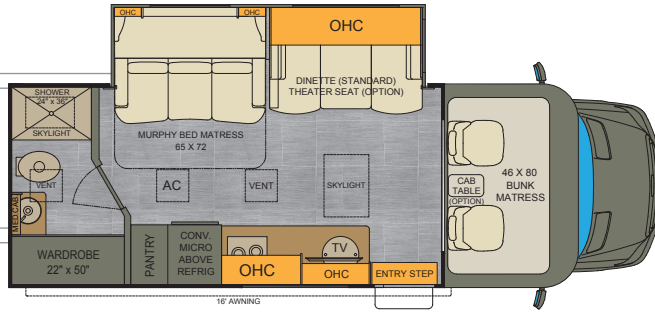
**25VFWC**  
25' w/ cabover bunk



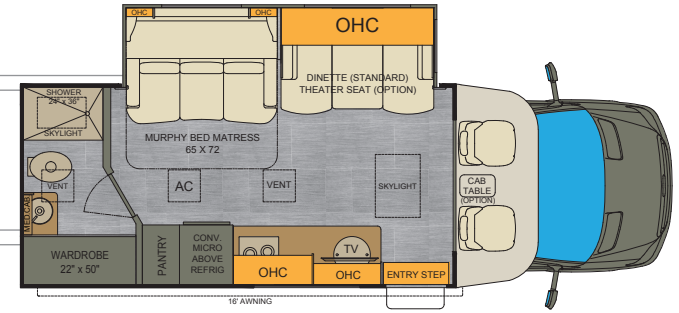
**25VFWs**  
25' w/cabover storage



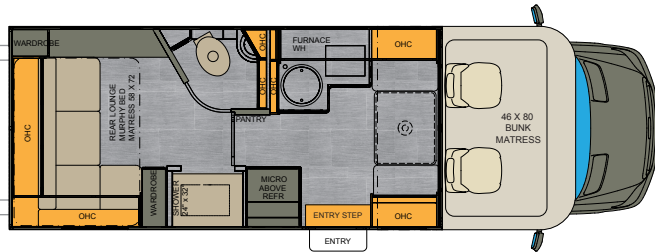
**25VRMC**  
25' murphy bed w/ cabover bunk



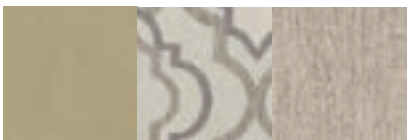
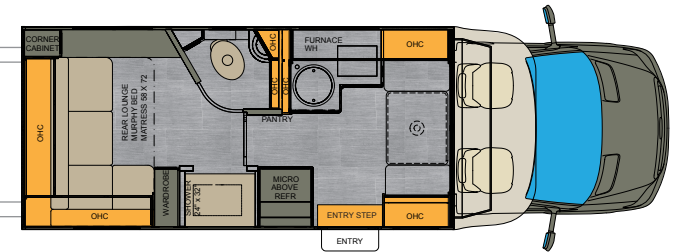
**25VRML**  
25' murphy bed w/cabover storage



**25VRLC**  
25' murphy bed w/ cabover bunk



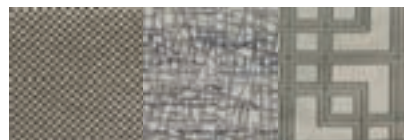
**25VRLN**  
25' murphy bed w/cabover storage



GEMSTONE



VANILLA FROST



TITANIUM



CASHMERE



HONEY MAPLE



BURNISHED MAPLE

**GOLD COAST**  
with bunk



**GOLD COAST**



**LAVA FIELD**  
with bunk



**LAVA FIELD**



**MOJAVE SUNSET**  
with bunk



**MOJAVE SUNSET**



**SUMMER SAND**  
with bunk



**SUMMER SAND**



**BLUE SKIES**  
with bunk



**BLUE SKIES**



**CAB/CHASSIS**

Attention, brake, and traffic sign assist  
Heated exterior mirrors  
Multifunction steering wheel  
Rain sensor w/ wet wiper system  
Active lane keeping assist  
Acoustic package  
Instrument cluster w/ colour display  
MBUX multimedia system with  
10.25" touchscreen  
Satellite/nav radio & 3yr map updates  
Wireless charging capabilities  
Distance regulator distronic plus  
Leather steering wheel  
Swivel, power and heated seats  
Removable cab carpet and privacy shade  
Rear and side view cameras  
Cab courtesy lights

**EXTERIOR**

Aluminum wheels  
Four pt hydraulic levelers  
Front and rear molded cap pieces  
Cab steps  
Full body paint  
Frameless windows  
Lighted grab handle  
Power steps  
Keyless entry  
Side swing baggage doors  
Outside entertainment center (N/A on  
RL, H.U. only)  
Lateral awning w/ wind sensor and LED lights  
Slide out awnings where applicable  
LP quick disconnect

**HEATING/COOLING & ELECTRICAL SYSTEMS**

13,500 BTU A/C w/ Heat Pump  
Heated holding tanks (black and grey)  
18,000 BTU ducted furnace  
13.2 gallon LP tank  
(2) Deluxe power vents w/ rain sensors  
Multiplex control system w/ app control  
(1) 175 solar panel (expandable)  
USB charging in living area and bedroom  
1200w inverter  
(2) house AGM batts  
30 amp service  
(3) GFI receptacles  
3.6KW LP generator w/ auto gen start  
Winegard 2.0

**INTERIOR**

LED TV in living area and bedroom (BR on  
FW and RL only)  
LED ceiling lights  
Roller shades and valances  
Power sky light in living area  
Soft touch padded walls and ceiling  
Woven vinyl flooring  
Booth dinette standard (n/a on RL)  
Ultra leather furniture  
Maple hardwood cabinetry  
Solid surface countertops  
Accent lighting at galley countertop  
Cable/Sat system ready

**BATH**

Shower w/ glass door (curtain on RL models)  
Skylight over shower  
Integrated sink  
Porcelain macerator toilet (macerator n/a on RM)

**GALLEY**

Single bowl undermount SS sink w/ cover  
7.0 Cu ft 3-way double door refrigerator  
1.0 Cu ft convection microwave oven  
2 burner gas flush mount cooktop w/ cover  
Slide out pantry

**WATER SYSTEMS**

34 gallons fresh water  
29 gallons black water  
29 gallons grey water  
Truma™ comfort plus tankless water heater  
Exterior shower and spigot  
Water filtration system  
Fresh water winterizing kit

**POPULAR OPTIONS**

3.2KW diesel generator  
Theater seating (N/A RL)  
Sofa IPO dinette (N/A on RM or RL)  
90 sheen high gloss cabinet finish  
Premier cabinet upgrade package  
(burnished sable only)  
Single burner induction stovetop  
Diamond shield anti-chip protection  
Cab table